

Components

IP66, UL Type 4X

40mm

⊕ "N.C." contact with positive opening operation or element (subassembly, head, lever) suitable for positive opening operation.

Warning! The positive opening operation of limit switch is only guaranteed if the elements noted with ⊕ are fitted.



LSTE41



LSTE52



LSTE72

LSTE91



LSTE40



LSA40X41

	Positive opening operation	Actuation speed max. m/s	Unit weight kg (1 pc)	Catalog number	List price
Angular motion heads with actuator					
To be actuated by 30° cam					
∅ 22mm polyamide roller lever 1	⊕	1.5	0.134	LSTE41	\$ 26
∅ 22mm stainless steel roller lever 1	⊕	1.5	0.142	LSTE42	34
∅ 22mm steel ball-bearing roller lever 1	⊕	1.5	0.145	LSTE43	29
∅ 45mm rubber roller lever 1	⊕	1.5	0.162	LSTE44	28
∅ 22mm adjustable polyamide roller lever 1	⊗	1.5	0.152	LSTE51	27
∅ 22mm adjustable stainless steel roller lever 1	⊗	1.5	0.161	LSTE52	35
∅ 22mm adjustable steel ball-bearing roller lever 1	⊗	1.5	0.163	LSTE53	31
∅ 45mm adjustable rubber roller lever 1	⊗	1.5	0.168	LSTE54	29
To be actuated by fully directional translation movement					
Stainless steel flexible lever with insulated end 1	⊗	1	0.145	LSTE61	29
Stainless steel coil spring lever 1	⊗	1	0.152	LSTE62	29
∅ 3mm stainless steel rod lever, 195mm 1	⊗	1	0.150	LSTE71	26
∅ 6mm polyamide rod lever, 195mm 1	⊗	1	0.145	LSTE72	26
∅ 6mm fiberglass rod lever, 195mm 1	⊗	1	0.149	LSTE73	27
Multidirectional angular motion heads (to be actuated by fully directional translation movement)					
Stainless steel spring rod	⊗	1	0.066	LSTE91	17
Stainless steel flexible rod with insulated end	⊗	1	0.068	LSTE92	19
Stainless steel coil spring rod	⊗	1	0.075	LSTE93	18
Angular motion head without actuator, for non-adjustable roller levers (delivered with M5 nylon stop nut)					
	⊕	1.5	0.102	LSTE40	20
Actuators for angular motion head LSTE40					
∅ 22mm polyamide roller lever 1	⊕	—	0.032	LSA40X41	6
∅ 22mm stainless steel roller lever 1	⊕	—	0.042	LSA40X42	14
∅ 22mm steel ball-bearing roller lever 1	⊕	—	0.044	LSA40X43	9
∅ 45mm rubber roller lever 1	⊗	—	0.050	LSA40X44	8

1 Free position adjustment of lever 9° by 9° over 360°

Components

IP66, UL Type 4X

40mm

Metal
Limit switches

⊕ "N.C." contact with positive opening operation or element (subassembly, head, lever) suitable for positive opening operation.

Warning! The positive opening operation of limit switch is only guaranteed if the elements noted with ⊕ are fitted.



LSTE50



LSA40X52



LSA40X71



LSA40X61



LSC40XB11

	Positive opening operation	Actuation speed max. m/s	Unit weight kg (1 pc)	Catalog number	List price
Angular motion head without actuator, for flexible or adjustable levers (delivered with M5 nylon stop nut & adaptation parts)					
	⊗	1 - 1.5 ②	0.121	LSTE50	\$ 22
Actuators for angular motion head LSTE50					
∅ 22mm adjustable polyamide roller lever ①	⊗	—	0.023	LSA40X51	5
∅ 22mm adjustable stainless steel roller lever ①	⊗	—	0.032	LSA40X52	13
∅ 22mm adjustable steel ball-bearing roller lever ①	⊗	—	0.034	LSA40X53	9
∅ 45mm adjustable rubber roller lever ①	⊗	—	0.039	LSA40X54	7
Stainless steel flexible lever with insulated end ①	⊗	—	0.017	LSA40X61	7
Stainless steel coil spring lever ①	⊗	—	0.023	LSA40X62	7
∅ 3mm adjustable stainless steel rod lever, 195mm ①	⊗	—	0.014	LSA40X71	4
∅ 6mm adjustable polyamide rod lever, 195mm ①	⊗	—	0.010	LSA40X72	4
∅ 6mm adjustable fiberglass rod lever, 195mm ①	⊗	—	0.014	LSA40X73	5
Contact blocks (with adaptor)					
1 NC & 1 NO 2-pole snap action	⊕	—	0.032	LSC40XB11	15
1 NC & 1 NO 2-pole non-overlapping slow action	⊕	—	0.032	LSC40XD11	15
1 NO & 1 NC 2-pole overlapping slow action	⊕	—	0.032	LSC40XC11	17
2 NC 2-pole simultaneous slow action	⊕	—	0.032	LSC40XL02	17
2 NO 2-pole simultaneous slow action	⊗	—	0.032	LSC40XL20	17
Bipolar 2 NC 2-pole snap action	⊕	—	0.032	LSC40XB02	17

① Free position adjustment of lever 9° by 9° over 360°
 ② According to lever.

9

Assembled IP66, UL Type 4X 60mm

Movement to be detected



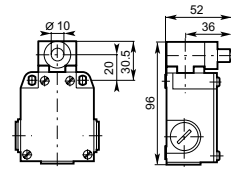
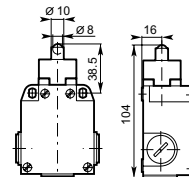
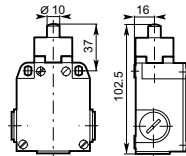
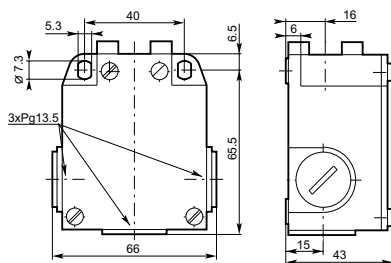
Operating head type

	Stainless steel plain plunger	Stainless steel ball plunger	Stainless steel lateral plain plunger
Conformity / \ominus (N.C. contact with positive opening operation)	\ominus	\ominus	\ominus
Maximum actuation speed m/s	0.5	0.5	0.5
Min. force: - actuation N	22	22	30
- positive opening operation N	66	66	70

9

Operating head type	Catalog number List price	Stainless steel plain plunger	Stainless steel ball plunger	Stainless steel lateral plain plunger
Snap action contacts 	LS65M11B11 \$ 40	LS65M12B11 \$ 42	LS65M21B11 \$ 42	
Non-overlapping Slow action contacts 	LS65M11D11 43	LS65M12D11 45	LS65M21D11 45	
Overlapping Slow action contacts 	LS65M11C11 44	LS65M12C11 47	LS65M21C11 47	
Slow action contacts 	LS65M11L02 44	LS65M12L02 47	LS65M21L02 47	
Slow action contacts 	LS65M11L20 44	LS65M12L20 47	LS65M21L20 47	
Snap action contacts 	LS65M11B02 44	LS65M12B02 47	LS65M21B02 47	
Weight (packing per unit)	kg	0.265	0.265	0.280

Dimensions (mm)



Assembled IP66, UL Type 4X 60mm

Metal
Limit switches

30° Cam translation movement

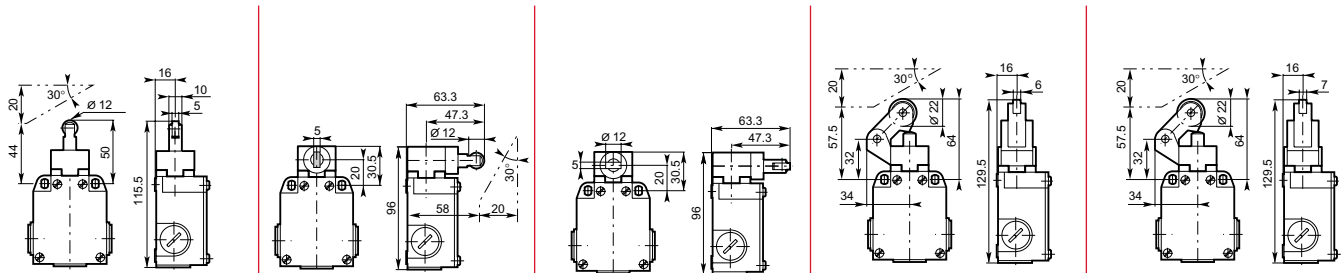


Stainless steel roller plunger	Lateral plunger with vertical roller	Lateral plunger with horizontal roller	ø 22 Polyamide roller lever	ø 22 Stainless steel roller lever
0.5 16 48	0.5 30 70	0.5 30 70	1.5 12 40	1.5 12 40

9

LS65M13B11 \$ 46 0 1.5 3.5 8.4 12.1 mm 21-22 13-14 21-22 13-14	LS65M22B11 \$ 47 0 1.6 3.8 9.0 13.0 mm 21-22 13-14 21-22 13-14	LS65M23B11 \$ 47 0 1.6 3.8 9.0 13.0 mm 21-22 13-14 21-22 13-14	LS65M31B11 \$ 44 0 1.9 4.6 10.9 15.8 mm 21-22 13-14 21-22 13-14	LS65M32B11 \$ 51 0 1.9 4.6 10.9 15.8 mm 21-22 13-14 21-22 13-14
LS65M13D11 49 0 3.5 6.8 15.2 mm 21-22 13-14 6.3	LS65M22D11 50 0 4.2 8.1 18.1 mm 21-22 13-14 7.5	LS65M23D11 50 0 4.2 8.1 18.1 mm 21-22 13-14 7.5	LS65M31D11 47 0 3.0 5.8 13.0 mm 21-22 13-14 5.4	LS65M32D11 55 0 3.0 5.8 13.0 mm 21-22 13-14 5.4
LS65M13C11 51 0 6.1 9.3 15.2 mm 21-22 13-14 3.5	LS65M22C11 52 0 7.2 11.1 18.1 mm 21-22 13-14 4.2	LS65M23C11 52 0 7.2 11.1 18.1 mm 21-22 13-14 4.2	LS65M31C11 49 0 5.2 8.0 13.0 mm 21-22 13-14 3.0	LS65M32C11 57 0 5.2 8.0 13.0 mm 21-22 13-14 3.0
LS65M13L02 51 0 3.0 6.3 15.2 mm 11-12 21-22	LS65M22L02 52 0 3.6 7.5 18.1 mm 11-12 21-22	LS65M23L02 52 0 3.6 7.5 18.1 mm 11-12 21-22	LS65M31L02 49 0 2.6 5.4 13.0 mm 11-12 21-22	LS65M32L02 57 0 2.6 5.4 13.0 mm 11-12 21-22
LS65M13L20 51 0 3.0 15.2 mm 13-14 23-24	LS65M22L20 52 0 3.6 18.1 mm 13-14 23-24	LS65M23L20 52 0 3.6 18.1 mm 13-14 23-24	LS65M31L20 49 0 2.6 13.0 mm 13-14 23-24	LS65M32L20 57 0 2.6 13.0 mm 13-14 23-24
LS65M13B02 51 0 1.5 3.5 8.4 12.1 mm 11-12 21-22 11-12 21-22	LS65M22B02 52 0 1.6 3.8 9.0 13.0 mm 11-12 21-22 11-12 21-22	LS65M23B02 52 0 1.6 3.8 9.0 13.0 mm 11-12 21-22 11-12 21-22	LS65M31B02 49 0 1.9 4.6 10.9 15.8 mm 11-12 21-22 11-12 21-22	LS65M32B02 57 0 1.9 4.6 10.9 15.8 mm 11-12 21-22 11-12 21-22
0.270	0.280	0.280	0.290	0.300

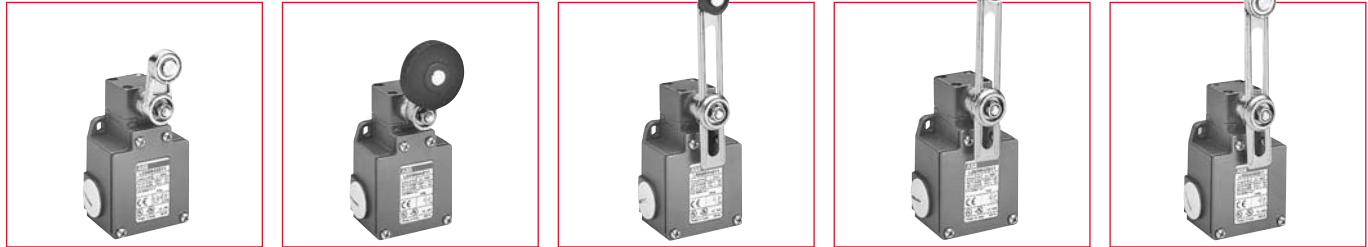
Dimensions (mm)



Assembled IP66, UL Type 4X 60mm

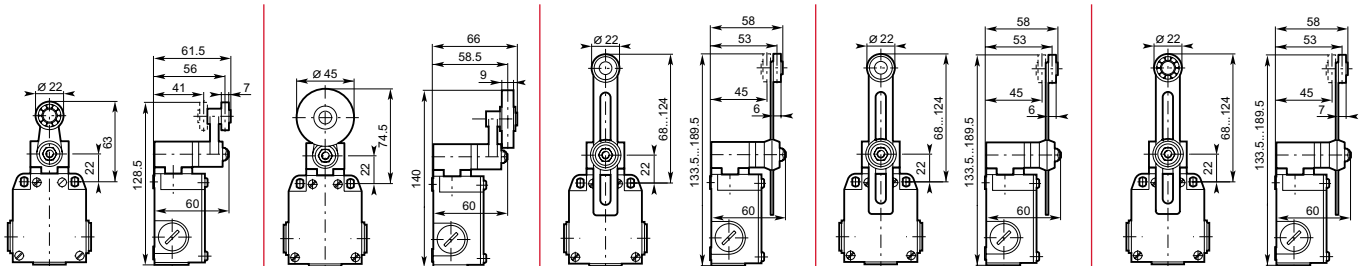
Metal
Limit switches

30° Cam translation movement



ø 22 Ball-bearing roller lever	ø 45 Rubber roller lever	Adjustable ø 22 polyamide roller lever	Adjustable ø 22 stainless steel roller lever	Adjustable ø 22 stainless steel ball-bearing roller lever
1.5 0.15 N.m 0.44 N.m	1.5 0.15 N.m -	1.5 0.15 N.m -	1.5 0.15 N.m -	1.5 0.15 N.m -

LS65M43B11 \$ 54 	LS65M44B11 \$ 53 	LS65M51B11 \$ 53 	LS65M52B11 \$ 60 	LS65M53B11 \$ 56
LS65M43D11 58 	LS65M44D11 56 	LS65M51D11 57 	LS65M52D11 65 	LS65M53D11 60
LS65M43C11 60 	LS65M44C11 58 	LS65M51C11 59 	LS65M52C11 67 	LS65M53C11 62
LS65M43L02 60 	LS65M44L02 58 	LS65M51L02 59 	LS65M52L02 67 	LS65M53L02 62
LS65M43L20 60 	LS65M44L20 58 	LS65M51L20 59 	LS65M52L20 67 	LS65M53L20 62
LS65M43B02 60 	LS65M44B02 58 	LS65M51B02 59 	LS65M52B02 67 	LS65M53B02 62
0.305	0.330	0.315	0.325	0.325



**Assembled
IP66, UL Type 4X
60mm**

Movement to be detected



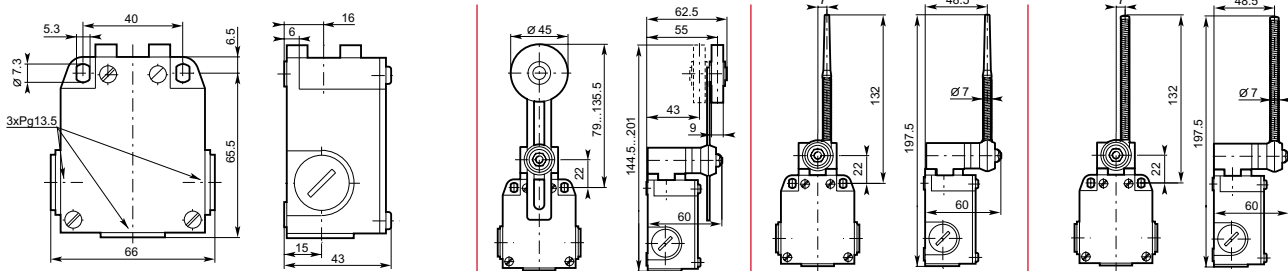
Operating head type

	Adjustable \varnothing 45 rubber roller lever	Flexible lever with insulated end	Coil spring lever
Conformity / \ominus (N.C. contact with positive opening operation)	■	■	■
Maximum actuation speed	1.5 m/s	1.5 m/s	1.5 m/s
Min. torque: - actuation	0.15 N.m	0.15 N.m	0.15 N.m
- positive opening operation	- N.m	- N.m	- N.m

9

		LS65M54B11 \$ 54	LS65M61B11 \$ 52	LS65M62B11 \$ 51
Snap action contacts 	Catalog number List price	LS65M54B11 \$ 54	LS65M61B11 \$ 52	LS65M62B11 \$ 51
	Operation diagram			
Non-overlapping Slow action contacts 	Catalog number List price	LS65M54D11 58	LS65M61D11 55	LS65M62D11 55
	Operation diagram			
Overlapping Slow action contacts 	Catalog number List price	LS65M54C11 60	LS65M61C11 57	LS65M62C11 57
	Operation diagram			
Slow action contacts 	Catalog number List price	LS65M54L02 60	LS65M61L02 57	LS65M62L02 57
	Operation diagram			
Slow action contacts 	Catalog number List price	LS65M54L20 60	LS65M61L20 57	LS65M62L20 57
	Operation diagram			
Snap action contacts 	Catalog number List price	LS65M54B02 60	LS65M61B02 57	LS65M62B02 57
	Operation diagram			
Weight (packing per unit)	kg	0.335	0.320	0.325

Dimensions (mm)



Components

IP66, UL Type 4X

60mm



LS65M00B11

Bodies with contact block for rectilinear or angular motion heads

LS 65 M 00 B 11

Limit Switch.....	LS						
Casing width: 60 mm		6					
Cable inlet:							
3 cable inlets for Pg 13.5 cable gland.....			0				
3 cable inlets M20 x 1.5 for ISO 20 cable gland			3				
3 cable inlets for 1/2" NPT			5				
Metal casing				M			
Without operating head						00	

Contacts

111 N.O. + 1 N.C. contacts
022 N.C. contacts
202 N.O. contacts

Snap action:
BZb Snap

Dependent (slow) action:
LZb Slow / Simultaneous
DZb Non-overlapping late make
CZb Overlapping early make

9



LSTE41

Operating heads

LS T E 41

Limit Switch.....	LS			
Operating head		T		
For Metal casing: 40 mm or 60 mm width			E	

References of heads:

11 ... 13with rectilinear movement (plain plunger, steel ball plunger and roller plunger)

21 ... 23with rectilinear movement (with lateral plain or roller plunger)

31 ... 33with rectilinear movement (with roller lever on steel plunger)

40with angular movement (without actuator) actuator to be ordered separately

41 ... 44with angular movement (roller lever)

50with angular movement (without actuator)

51 ... 54with angular movement (adjustable roller lever)

61, 62flexible lever (spring)

71, 72, 73adjustable lever (rod)

91 ... 93multidirectional angular movement (spring rod)



LSA40X51

Separate actuators (Roller lever, adjustable roller or rod levers, etc.)

LS A 40 X 51

Limit Switch.....	LS				
Actuator (roller)		A			
Casing width: 40 mm			40		
The reference 40 is common to all casings (LS40P, LS40M and LS60M)					

Reference of actuators:

41 ... 44non-adjustable roller lever

51 ... 54adjustable roller lever

61, 62flexible lever (spring)

71, 72, 73adjustable lever (rod)

For casing:

M Metal

P Plastic

X Plastic or metal

Separate contact blocks

LS C 40 X D 11

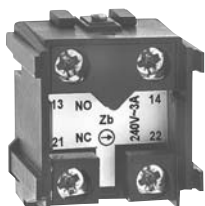
Limit Switch.....	LS				
Contact blocks		C			
Casing width: 40 mm			40		
The reference 40 is common to all casings (LS40P, LS40M and LS60M)					

Contacts

111 N.O. + 1 N.C. contacts
022 N.C. contacts
202 N.O. contacts

Snap action:
BZb Snap

Dependent (slow) action:
LZb Slow / Simultaneous
DZb Non-overlapping late make
CZb Overlapping early make



LSC40XD11

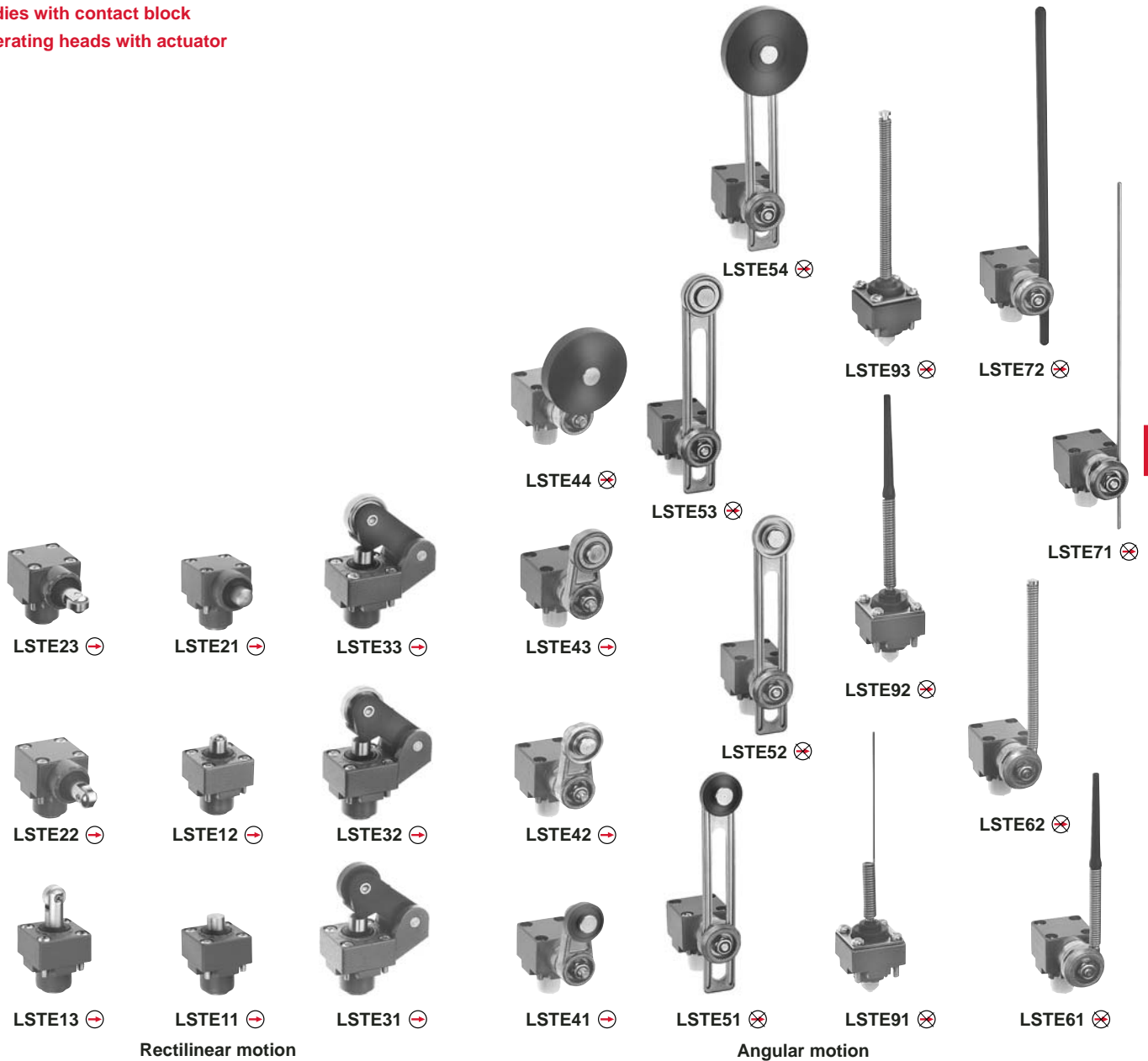
Components

IP66, UL Type 4X

60mm

Metal
Limit switches

- Bodies with contact block
- Operating heads with actuator



9

LSTE... rectilinear motion heads

- To be actuated from end. With plunger (plain, lateral plain or ball): LSTE11, LSTE12 and LSTE21.
- To be actuated by 30° cam translation.
With roller plunger: LSTE13, LSTE22 and LSTE23.
- To be actuated unidirectionally by 30° cam translation.
With roller lever on stainless steel plunger: LSTE31 ... LSTE33.

LSTE... angular motion heads

- To be actuated by 30° cam translation.
With roller lever: LSTE41 ... LSTE54.
- To be actuated by fully directional translation movement.
With rod or spring lever: LSTE61 ... LSTE72.
- To be actuated multidirectionally.
With spring rod: LSTE91 ... LSTE93.



Bodies with contact block

- ⊕ LS65M00B11, LS65M00D11, LS65M00C11, LS65M00L02, LS65M00B02
- ⊗ LS65M00L20

⊕: Suitable for positive opening operation (IEC 60947-5-1).

Warning! The positive opening operation of limit switch is only guaranteed if the elements noted with ⊕ are fitted.

Components

IP66, UL Type 4X
60mm

- Bodies with contact blocks
- Angular motion heads (without actuator)
- Separate actuators
- Separate contact blocks

9



LSA40X44 ⊗



LSA40X43 ⊕



LSA40X42 ⊕



LSA40X41 ⊕

Roller levers



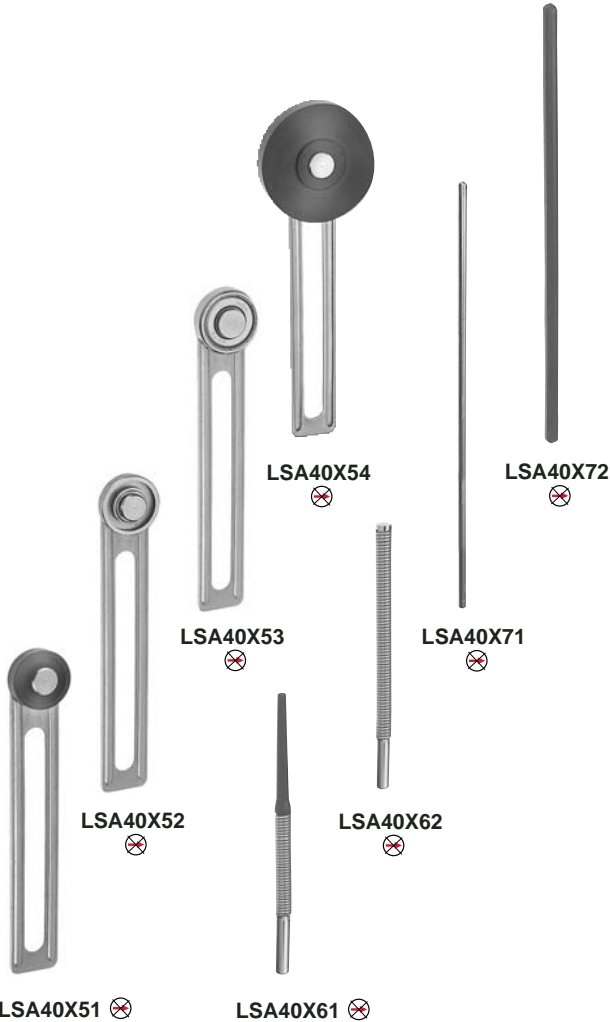
LSTE40 ⊕

LSTE40 angular motion head
For roller levers (non-adjustable)
LSA40X41 ... LSA40X44



Bodies with contact block

- ⊕ LS65M00B11, LS65M00D11, LS65M00C11, LS65M00L02, LS65M00B02
- ⊗ LS65M00L20



Adjustable or flexible levers



LSTE50 ⊗

LSTE50 angular motion head
For flexible or adjustable levers LSA40X51 ... LSA40X54, LSA40X61, LSA40X62, LSA40X71 and LSA40X72.



Contact blocks

- ⊕ LSC40XB11, LSC40XD11, LSC40XC11, LSC40XL02, LSC40XB02
- ⊗ LSC40XL20

⊕ : Suitable for positive opening operation (IEC 60947-5-1)

Warning! The positive opening operation of limit switch is only guaranteed if the elements noted with ⊕ are fitted.

Components

IP66, UL Type 4X

60mm

Metal
Limit switches

⊕ "N.C." contact with positive opening operation or element (subassembly, head, lever) suitable for positive opening operation.

Warning! The positive opening operation of limit switch is only guaranteed if the elements noted with ⊕ are fitted.



LS60M00B11



LSTE11

LSTE13



LSTE12

LSTE23



LSTE31

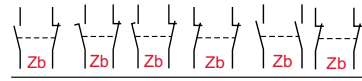
LSTE42



LSTE54

LSTE52

Contact blocks



Positive opening operation

Actuation speed max. m/s

Unit weight kg (1 pc)

Catalog number

List price

B11 D11 C11 L02 L20 B02

Bodies with contact block for rectilinear or angular motion heads

	B11	D11	C11	L02	L20	B02	Positive opening operation	Actuation speed max. m/s	Unit weight kg (1 pc)	Catalog number	List price
1							⊕	—	0.198	LS65M00B11	\$ 30
		1					⊕	—	0.198	LS65M00D11	31
			1				⊕	—	0.198	LS65M00C11	32
				1			⊕	—	0.198	LS65M00L02	32
					1		⊗	—	0.198	LS65M00L20	32
						1	⊕	—	0.198	LS65M00B02	32

Rectilinear motion heads

To be actuated from end

Stainless steel plain plunger	⊕	0.5	0.077	LSTE11	14
Stainless steel ball plunger	⊕	0.5	0.076	LSTE12	17
Stainless steel lateral plain plunger	⊕	0.5	0.093	LSTE21	17

To be actuated by 30° cam

Stainless steel roller plunger	⊕	0.5	0.084	LSTE13	20
Stainless steel lateral plunger with vertical roller	⊕	0.5	0.098	LSTE22	21
Stainless steel lateral plunger with horizontal roller	⊕	0.5	0.098	LSTE23	21

To be actuated unidirectionally by 30° cam

∅ 22mm polyamide roller lever on stainless steel plunger	⊕	1.5	0.111	LSTE31	19
∅ 22mm stainless steel roller lever on stainless steel plunger	⊕	1.5	0.121	LSTE32	26
∅ 22mm steel ball-bearing roller lever on stainless steel plunger	⊕	1.5	0.122	LSTE33	21

Angular motion heads with actuator

To be actuated by 30° cam

∅ 22mm polyamide roller lever ①	⊕	1.5	0.134	LSTE41	26
∅ 22mm stainless steel roller lever ①	⊕	1.5	0.142	LSTE42	34
∅ 22mm steel ball-bearing roller lever ①	⊕	1.5	0.145	LSTE43	29
∅ 45mm rubber roller lever ①	⊗	1.5	0.162	LSTE44	28
∅ 22mm adjustable polyamide roller lever ①	⊗	1.5	0.152	LSTE51	27
∅ 22mm adjustable stainless steel roller lever ①	⊗	1.5	0.161	LSTE52	35
∅ 22mm steel ball-bearing roller lever ①	⊗	1.5	0.163	LSTE53	31
∅ 45mm adjustable rubber roller lever ①	⊗	1.5	0.168	LSTE54	29

① Free position adjustment of lever 9° by 9° over 360°.

Components

IP66, UL Type 4X

60mm

⊕ "N.C." contact with positive opening operation or element (subassembly, head, lever) suitable for positive opening operation.

Warning! The positive opening operation of limit switch is only guaranteed if the elements noted with ⊕ are fitted.



LSTE61



LSTE71



LSTE93



LSTE40



LSA40X42



LSTE50

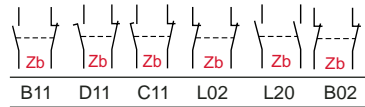


LSA40X53



LSA40X62

Contact blocks



Positive opening operation

Actuation speed max. m/s

Unit weight kg (1 pc)

Catalog number

List price

To be actuated by fully directional translation movement

Stainless steel flexible lever with insulated end ①	⊕	1	0.145	LSTE61	\$ 29
Stainless steel coil spring lever ①	⊕	1	0.152	LSTE62	29
∅ 3mm adjustable stainless steel rod lever, 195mm ①	⊕	1	0.150	LSTE71	26
∅ 3mm adjustable polyamide rod lever, 195mm ①	⊕	1	0.145	LSTE72	26
∅ 6mm adjustable fiberglass rod lever, 195mm ①	⊕	1	0.149	LSTE73	27

Multidirectional angular motion head (to be actuated by fully directional translation movement)

Stainless steel spring rod	⊗	1	0.066	LSTE91	17
Stainless steel flexible rod with insulated end	⊗	1	0.068	LSTE92	19
Stainless steel coil spring rod	⊗	1	0.075	LSTE93	18

Angular motion head without actuator, for non-adjustable roller levers (delivered with M5 nylon stop nut)

	⊕	1.5	0.102	LSTE40	20
--	---	-----	-------	--------	----

Actuator for angular motion head LSTE40

∅ 22mm polyamide roller lever ①	⊕	—	0.032	LSA40X41	6
∅ 22mm stainless steel roller lever ①	⊕	—	0.042	LSA40X42	14
∅ 22mm steel ball-bearing roller lever ①	⊕	—	0.044	LSA40X43	9
∅ 45mm rubber roller lever ①	⊗	—	0.050	LSA40X44	8

Angular motion head without actuator for flexible or adjustable levers (delivered with M5 nylon stop nut & adaptation parts)

	⊗	1 - 1.5 ②	0.121	LSTE50	22
--	---	-----------	-------	--------	----

Actuators for angular motion head LSTE50

∅ 22mm adjustable polyamide roller lever ①	⊗	—	0.023	LSA40X51	5
∅ 22mm adjustable stainless steel roller lever ①	⊗	—	0.032	LSA40X52	13
∅ 45mm adjustable steel ball-bearing roller lever ①	⊗	—	0.034	LSA40X53	9
∅ 45mm adjustable rubber roller lever ①	⊗	—	0.039	LSA40X54	7
Stainless steel flexible lever with insulated end ①	⊗	—	0.017	LSA40X61	7
Stainless steel coil spring lever ①	⊗	—	0.023	LSA40X62	7
∅ 3mm adjustable stainless steel rod lever, 195mm ①	⊗	—	0.014	LSA40X71	4
∅ 6mm adjustable polyamide rod lever, 195mm ①	⊗	—	0.010	LSA40X72	4
∅ 6mm adjustable fiberglass rod lever, 195mm ①	⊗	—	0.014	LSA40X73	5

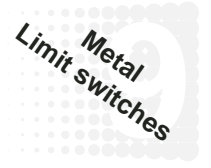
① Free position adjustment of lever 9° by 9° over 360°.

② According to lever.

Components

IP66, UL Type 4X

60mm



⊕ "N.C." contact with positive opening operation or element (subassembly, head, lever) suitable for positive opening operation.

Warning! The positive opening operation of limit switch is only guaranteed if the elements noted with ⊕ are fitted.



LSC40XB11

Contact blocks	Positive opening operation	Actuation speed max. m/s	Unit weight kg (1 pc)	Catalog number	List price
 B11 D11 C11 L02 L20 B02					
Contact blocks (with adaptor)					
1 NC & 1 NO 2-pole snap action	⊕	—	0.032	LSC40XB11	\$ 15
1 NC & 1 NO 2-pole non-overlapping slow action	⊕	—	0.032	LSC40XD11	15
1 NO & 1 NC 2-pole overlapping slow action	⊕	—	0.032	LSC40XC11	17
2 NC 2-pole simultaneous slow action	⊕	—	0.032	LSC40XL02	17
2 NO 2-pole simultaneous slow action	⊗	—	0.032	LSC40XL20	17
2 NC 2-pole snap action	⊕	—	0.032	LSC40XB02	17

Ⓢ Free position adjustment of lever 9° by 9° over 360°.

Technical data IP 65, UL Type 4

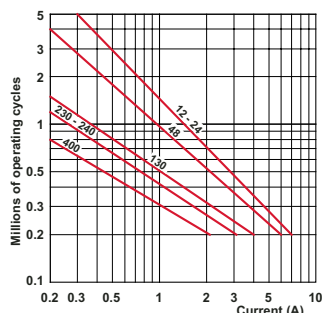
General technical data

Standards	Devices conform with international IEC 947-5-1 and European EN 60 947-5-1 standards	
Certifications - Approvals	UL & CSA	
Air temperature near the device (IEC) – during operation – for storage	°C °C	– 25 ... + 70 – 30 ... + 80
Climatic withstand	According to IEC 68-2-3 and salty mist according to IEC 68-2-11	
Mounting positions	All positions are authorized	
Shock withstand (according to IEC 68-2-27 and EN 60 068-2-27)	50g ^① (1/2 sinusoidal shock for 11 ms) no change in contact position	
Resistance to vibrations (acc. to IEC 68-2-6 and EN 60 068-2-6)	25g (10 – 500 Hz) no change in position of contacts greater than 100 μs	
Protection against electrical shocks (acc. to IEC 536)	Class I	
Degree of protection	UL Type 4X & IP 66	
Consistency (measured over 1 million operations)	0.05 mm (upon closing point)	
Minimum actuation speed	m/s	Slow action contacts 0.060 / Snap action contacts 0.001

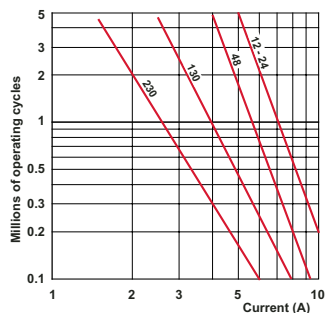
Electrical Data

9	Rated insulation voltage U_i - according to IEC 947-1 and EN 60-947-1 - according to UL 508 and CSA C22-2 n° 14	500 V (degree of pollution 3) A 600, Q 600	
	Rated impulse withstand voltage U_{imp} (according to IEC 947-1 and EN 60 947-1)	kV	6
Conventional free air thermal current I_{th} (according to IEC 947-5-1) $q \leq 40$ °C	A	10	
Short-circuit protection $U_g \leq 500$ V a.c. - gG (gl) type fuses	A	10	
Rated operational current I_o / AC-15 (according to IEC 947-5-1)	24 V - 50/60 Hz	A	10
	130 V - 50/60 Hz	A	5.5
	230 V - 50/60 Hz	A	3.1
	240 V - 50/60 Hz	A	3
	400 V - 50/60 Hz	A	1.8
I_o / DC-13 (according to IEC 947-5-1)	24 V - d.c.	A	2.8
	110 V - d.c.	A	0.6
	250 V - d.c.	A	0.27
Switching frequency	Cycles/h	3600	
Load factor		0.5	
Resistance between contacts	mW	25	
Connecting terminals	M3.5 (+, -) pozidriv 2 screw with cable clamp		
Terminal for protective conductor	M3.5 (+, -) pozidriv 2 screw with cable clamp		
Connecting capacity	1 or 2 x mm ²	0.5 ... 2.5	
Terminal marking	According to EN 50 013		
Mechanical durability	Millions of operations	30 } LS	M { 11– 13; 21– 23; 31– 33 41– 44; 51– 54; 61– 72 91– 93
		25 } LS	
		10 } LS	
Electrical durability (according to IEC 947-5-1)	Utilization categories AC-15 and DC-13 (Load factor of 0.5 according to curves below)		

AC-15 — Snap action



AC-15 — Slow action



DC-13		Snap action	Slow action
Power breaking for a durability of 5 million operating cycles			
Voltage	24 V	9.5 W	12 W
Voltage	48 V	6.8 W	9 W
Voltage	110 V	3.6 W	6 W

^① except for LS30/31/35 (P42): 25g