

# GF Piping Systems → worldwide

Our sales companies and representatives ensure local support in over 100 countries.

[www.piping.georgfischer.com](http://www.piping.georgfischer.com)



The technical data are not binding and not expressly warranted characteristics of the goods. They are subject to change. Please consult our General Conditions of Supply.

#### Australia

George Fischer Pty Ltd  
Kingsgrove NSW 2008  
Phone +61(0)2/95 54 39 77  
[australia.ps@georgfischer.com](mailto:australia.ps@georgfischer.com)  
[www.georgfischer.com.au](http://www.georgfischer.com.au)

#### Austria

Georg Fischer  
Rohrleitungssysteme GmbH  
3130 Herzogenburg  
Phone +43(0)2782/856 43-0  
[austria.ps@georgfischer.com](mailto:austria.ps@georgfischer.com)  
[www.georgfischer.at](http://www.georgfischer.at)

#### Belgium/Luxembourg

Georg Fischer NV/SA  
1070 Bruxelles/Brüssel  
Phone +32(0)2/556 40 20  
[be.ps@georgfischer.com](mailto:be.ps@georgfischer.com)  
[www.georgfischer.be](http://www.georgfischer.be)

#### Brazil

Georg Fischer Ltda  
04795-100 São Paulo  
Phone +55(0)11/5687 1311  
[br.ps@georgfischer.com](mailto:br.ps@georgfischer.com)

#### China

Georg Fischer  
Piping Systems Ltd Shanghai  
Pudong, Shanghai 201319  
Phone +86(0)21/58 13 33 33  
[china.ps@georgfischer.com](mailto:china.ps@georgfischer.com)  
[www.cn.piping.georgfischer.com](http://www.cn.piping.georgfischer.com)

#### Denmark/Iceland

Georg Fischer A/S  
2630 Taastrup  
Phone +45 (0)70 22 19 75  
[info.dk.ps@georgfischer.com](mailto:info.dk.ps@georgfischer.com)  
[www.georgfischer.dk](http://www.georgfischer.dk)

#### France

Georg Fischer S.A.S.  
93208 Saint-Denis Cedex 1  
Phone +33(0)1/492 21 34 1  
[fr.ps@georgfischer.com](mailto:fr.ps@georgfischer.com)  
[www.georgfischer.fr](http://www.georgfischer.fr)

#### Germany

Georg Fischer GmbH  
73095 Albershausen  
Phone +49(0)7161/302-0  
[info.de.ps@georgfischer.com](mailto:info.de.ps@georgfischer.com)  
[www.vgd.georgfischer.de](http://www.vgd.georgfischer.de)

Georg Fischer DEKA GmbH  
35232 Dautphetal-Mornshausen  
Phone +49(0)6468/915-0  
[deka.ps@georgfischer.com](mailto:deka.ps@georgfischer.com)  
[www.dekapipe.de](http://www.dekapipe.de)

#### India

Georg Fischer Piping Systems Ltd  
400 093 Mumbai  
Phone +91(0)22/2820 2362  
[in.ps@georgfischer.com](mailto:in.ps@georgfischer.com)

#### Italy

Georg Fischer S.p.A.  
20063 Cernusco S/N (MI)  
Phone +3902/921 861  
[it.ps@georgfischer.com](mailto:it.ps@georgfischer.com)  
[www.georgfischer.it](http://www.georgfischer.it)

#### Japan

Georg Fischer Ltd  
556-0011 Osaka,  
Phone +81(0)6/6635 2691  
[jp.ps@georgfischer.com](mailto:jp.ps@georgfischer.com)  
[www.georgfischer.jp](http://www.georgfischer.jp)

#### Malaysia

Georg Fischer (M) Sdn. Bhd.  
47500 Subang Jaya  
Phone +60 (0)3-8024 7879  
[conne.kong@georgfischer.com.my](mailto:conne.kong@georgfischer.com.my)

#### Middle East

Georg Fischer Piping Systems  
Dubai, United Arab Emirates  
Phone +971 4 289 41 20  
[gfdubai@emirates.net.ae](mailto:gfdubai@emirates.net.ae)  
[www.piping.georgfischer.com](http://www.piping.georgfischer.com)

#### Netherlands

Georg Fischer N.V.  
8161 PA Epe  
Phone +31(0)578/678 222  
[nl.ps@georgfischer.com](mailto:nl.ps@georgfischer.com)  
[www.georgfischer.nl](http://www.georgfischer.nl)

#### Norway

Georg Fischer AS  
1351 Rud  
Phone +47(0)67 18 29 00  
[no.ps@georgfischer.com](mailto:no.ps@georgfischer.com)  
[www.georgfischer.no](http://www.georgfischer.no)

#### Poland

Georg Fischer Sp. z o.o.  
02-226 Warszawa  
Phone +48(0)22/313 10 50  
[poland.ps@georgfischer.com](mailto:poland.ps@georgfischer.com)  
[www.georgfischer.pl](http://www.georgfischer.pl)

#### Romania

Georg Fischer  
Rohrleitungssysteme AG  
70000 Bucharest - Sector 1  
Phone +40(0)1/222 91 36  
[ro.ps@georgfischer.com](mailto:ro.ps@georgfischer.com)

#### Singapore

Georg Fischer Pte Ltd  
528 872 Singapore  
Phone +65(0)67 47 06 11  
[sgp.ps@georgfischer.com](mailto:sgp.ps@georgfischer.com)  
[www.georgfischer.com.sg](http://www.georgfischer.com.sg)

#### Spain/Portugal

Georg Fischer S.A.  
28046 Madrid  
Phone +34(0)91/781 98 90  
[es.ps@georgfischer.com](mailto:es.ps@georgfischer.com)  
[www.georgfischer.es](http://www.georgfischer.es)

#### Sweden/Finland

Georg Fischer AB  
12523 Älvsjö-Stockholm  
Phone +46(0)8/506 775 00  
[info.se.ps@georgfischer.com](mailto:info.se.ps@georgfischer.com)  
[www.georgfischer.se](http://www.georgfischer.se)

#### Switzerland

Georg Fischer  
Rohrleitungssysteme (Schweiz) AG  
8201 Schaffhausen  
Phone +41(0)52 631 30 26  
[ch.ps@georgfischer.com](mailto:ch.ps@georgfischer.com)  
[www.piping.georgfischer.ch](http://www.piping.georgfischer.ch)

#### Taiwan

Georg Fischer Ltd.  
2F, No. 88, Hsing Te Road  
San Chung City  
Taipei Hsien, Taiwan (R.O.C.)  
Phone +886 2 8512 2822  
Fax +886 2 8512 2823

#### United Kingdom/Ireland

Georg Fischer Sales Limited  
Coventry, CV2 2ST  
Phone +44(0)2476 535 535  
[uk.ps@georgfischer.com](mailto:uk.ps@georgfischer.com)  
[www.georgfischer.co.uk](http://www.georgfischer.co.uk)

#### USA/Canada/Latin America/Caribbean

Georg Fischer Inc.  
Tustin, CA 92780-7258  
Phone +1(714) 731 88 00  
Toll Free 800/854 40 90  
[us.ps@georgfischer.com](mailto:us.ps@georgfischer.com)  
[www.us.piping.georgfischer.com](http://www.us.piping.georgfischer.com)

#### Export

Georg Fischer  
Piping Systems (Switzerland) Ltd.  
8201 Schaffhausen  
Phone +41 (0)52-631 30 26  
Fax +41 (0)52-631 28 93  
[export.ps@georgfischer.com](mailto:export.ps@georgfischer.com)  
[www.piping.georgfischer.ch](http://www.piping.georgfischer.ch)

GMST 5944/4 (1.06)

© Georg Fischer Piping Systems Ltd  
CH-8201 Schaffhausen/Switzerland, 2006  
Printed in Switzerland

**+GF+**

**GEORG FISCHER**  
PIPING SYSTEMS



Technical  
Documentation

# Solenoid Valves Type 166



**+GF+**

**GEORG FISCHER**  
PIPING SYSTEMS



# Solenoid valves

## Type 166

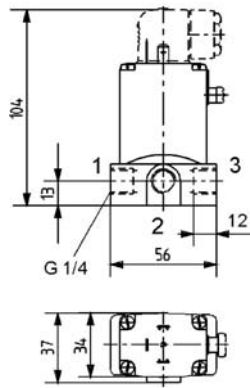
The solenoid valves type 166 are direct-acting 2/2 or 3/2-way valves with a clapper armature. They are used for diverse functions, e.g. opening, shutting, dosing, dispensing and mixing. The solenoid system and medium area are separated from one another by means of an isolating membrane. The valve therefore has a long service life, even with dry runs. Due to the use of PP and PVDF as housing materials, the type 166 is especially suitable for aggressive media. The valve is mounted via a G 1/4" union and is available in the nominal diameters DN3, DN4 and DN5.

All the valves are naturally also available as 24 V=, 24V 50Hz, 110V 60Hz and 230V 50Hz versions.

### Measurements:

#### Type 166

The connections marked 1, 2 and 3 are indicated according to mode of operation in the table below.



### → Our strengths

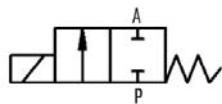
- compact design
- easy installation
- the right operating modes
- low power consumption
- arbitrary mounting position

### Connection table

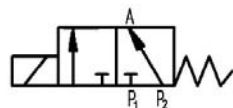
Mode of operation	Connection 1	Connection 2	Connection 3
A	A	-	P
E	P1	A	P2
F	A	P	B

### Mode of operation :

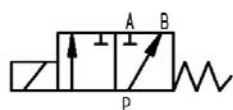
**A** = normally closed, de-energized, outlet A vented



**E** = mixed valve, direct-acting, de-energized P2 = → outlet A open, P1 closed



**F** = feed valve, direct-acting, de-energized P = → B open, outlet A closed



### Technical data type 166

Housing and seat materials	PP / PVDF	
Seal materials	EPDM / FPM	
Medium temperature	0...80°C	PP with EPDM
	0...80°C	PP with FPM
	-20...80°C	PVDF with FPM
Ambient temperature	0...55°C	
Viscosity	max. 37 mm <sup>2</sup> /s	
Operating voltage	24 V DC / 24 V, 50 Hz / 230 V, 50 Hz	
Voltage tolerance	+/- 10%	
Switching frequency	ca. 1000/min	
Rated duty	Intermittent 40%, 30 min	
Electr. connection	Socket for cable ø 7mm	
Protection rating	IP65 with socket connection	
Any mounting position	preferably actuator on top	
Pipe connection	G 1/4"	



Diameter [mm]	Mode of operation	Kv-value* Water [l/min]	Pressure range **		Power consumption startup (electric)		Power consumption operation (electric)		Weight [kg]
			AC [bar]	DC [bar]	AC [VA]	DC [W]	AC [VA/W]	DC [W]	
3	A	4.20	0 - 10	0 - 8	30	8	15/8	8	0.4
	F		0 - 10	0 - 8					
	E		0 - 6	0 - 4					
4	A	5.00	0 - 5	0 - 4	30	8	15/8	8	0.4
	E		0 - 5	0 - 4					
	F		0 - 3	0 - 2					
5	A	6.70	0 - 4.5	-					0.4

Response time ***	Open		Close	
	AC [ms]	DC [ms]	AC [ms]	DC [ms]
Mode of operation				
A	ca. 8	10 - 17	ca. 15	15 - 20

\* Kv-value [m<sup>3</sup>/h] at +20°C, 1 bar pressure at valve inlet and free outlet  
 \*\* Pressure data [bar] gauge pressure

\*\*\* Response time [ms] Measured at valve outlet at 6 bar and +20°C  
 open: pressure buildup 0...90%, close: pressure release 100...10%

Solenoid valve 166 PP-H							
Mode of operation	Nominal diameter [mm]	Kv value [l/min]	Pipe connection	Pressure range	Voltage	EPDM	FPM
A	3.0	4.20	G 1/4"	0 - 8	24V DC	199 166 000	199 166 005
A	4.0	5.00	G 1/4"	0 - 4	24V DC	199 166 001	199 166 006
A	5.0	6.70	G 1/4"	0 - 3	24V DC	199 166 002	199 166 007
A	3.0	4.20	G 1/4"	0 - 10	230V 50Hz	199 166 010	199 166 015
A	4.0	5.00	G 1/4"	0 - 5	230V 50Hz	199 166 011	199 166 016
A	5.0	6.70	G 1/4"	0 - 4.5	230V 50Hz	199 166 012	199 166 017
E	3.0	4.20	G 1/4"	0 - 4	24V DC	199 166 150	199 166 155
E	4.0	5.00	G 1/4"	0 - 2	24V DC	199 166 151	199 166 156
E	3.0	4.20	G 1/4"	0 - 6	230V 50Hz	199 166 160	199 166 165
E	4.0	5.00	G 1/4"	0 - 3	230V 50Hz	199 166 161	199 166 166
F	4.0	5.00	G 1/4"	0 - 4	24V DC	199 166 201	199 166 206
F	4.0	5.00	G 1/4"	0 - 4	24V DC	199 166 211	199 166 216

Solenoid valve 166 PVDF							
Mode of operation	Nominal diameter [mm]	Kv value [l/min]	Pipe connection	Pressure range	Voltage	EPDM	FPM
A	3.0	4.20	G 1/4"	0 - 8	24V DC		199 166 505
A	4.0	5.00	G 1/4"	0 - 4	24V DC		199 166 506
A	5.0	6.70	G 1/4"	0 - 3	24V DC		199 166 507
A	3.0	4.20	G 1/4"	0 - 10	230V 50Hz		199 166 515
A	4.0	5.00	G 1/4"	0 - 5	230V 50Hz		199 166 516
A	5.0	6.70	G 1/4"	0 - 4.5	230V 50Hz		199 166 517
E	4.0	5.00	G 1/4"	0 - 2	24V DC		199 166 656
E	4.0	5.00	G 1/4"	0 - 3	230V 50Hz		199 166 666

