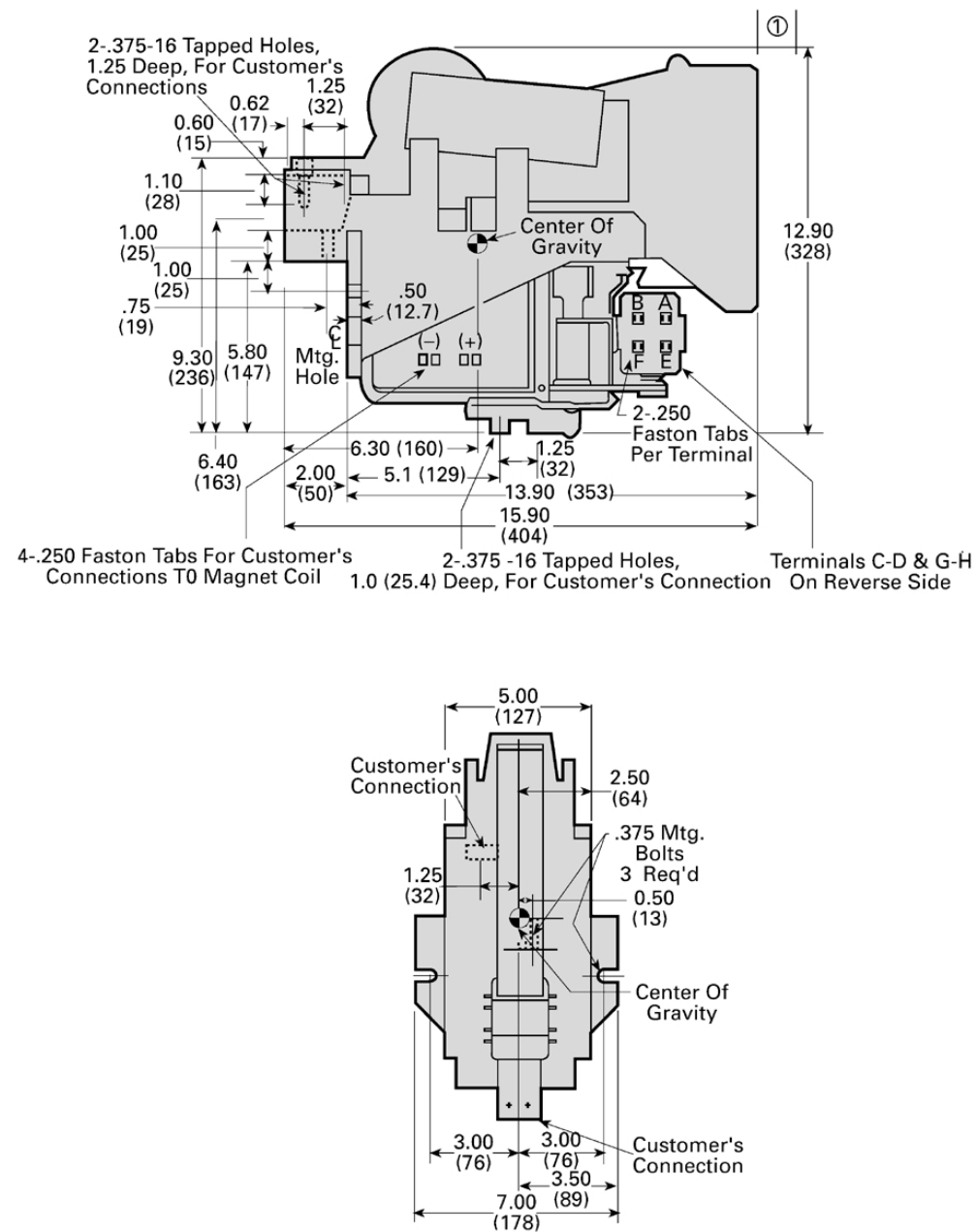


## Outline Drawings

Special Purpose – Type 716



All dimensions shown in inches. For reference purposes only. Not to be used for design or construction purposes.

Spec Tech Industrial 203 Vest Ave. Valley Park, MO 63088 Phone: 888 SPECTECH  
Email: sales@spectechind.com www.spectechind.com

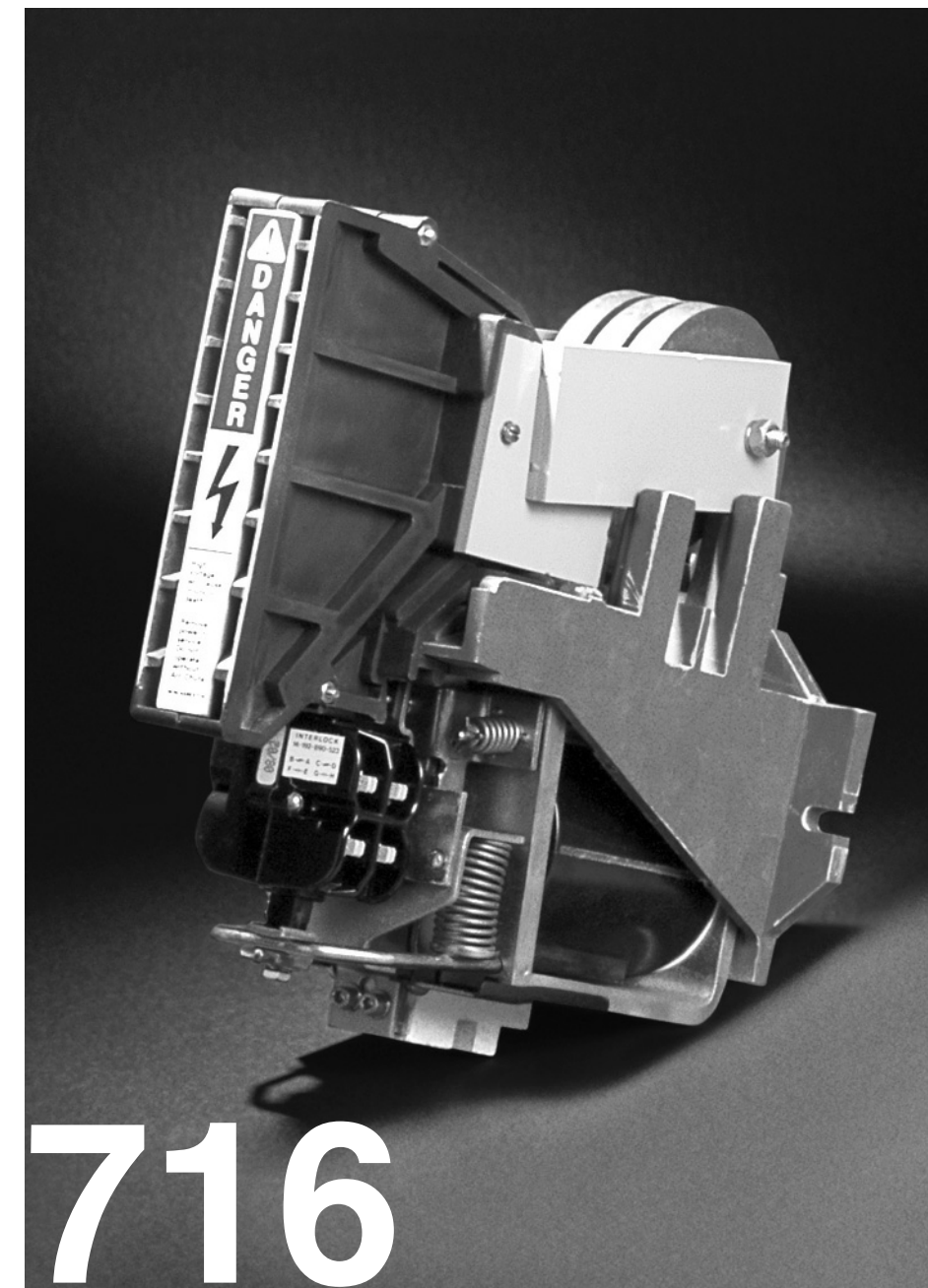
Hubbell Industrial Controls, Inc.

## Type 716 1600 Ampere 1500 Volt DC Contactor

Catalog 42716 • September 2005

42716

Application/Model List



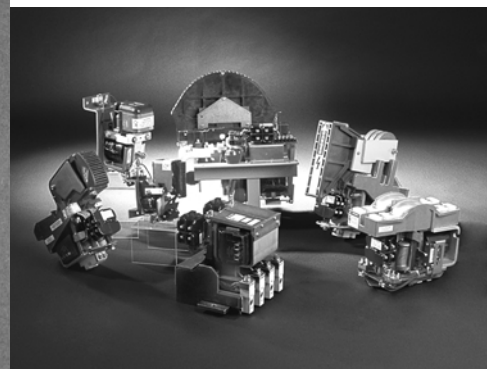
# 716

# DC CONTACTOR

### Highlights

- Non-polarized arc chute (series blowout coil) design as standard
- Optional polarized arc chute (permanent magnet type) design available – Consult factory
- Silver alloy main contacts
- Arc chute safety interlock
- Trifurcated main contacts
- Silver-plated current-carrying parts
- High dielectric and mechanical strength

For regenerative and non-regenerative systems requiring limited interrupting capacity, the Type 716 is ideal. Applications include gas and oil well drilling equipment, transit and rail systems, adjustable speed drives, electric haul trucks, mining machinery, fuel cells, uninterruptible power supplies, and crane controls. A single pole, single throw normally open power contactor, it is rated at 1600 Ampere continuous duty at 1500 VDC in still air.



### Amazingly Reliable – Hubbell Industrial Controls Devices

The Hubbell ICD family of rugged, high-performance DC devices are in great demand by industries needing reliable, solid state, adjustable controls. Products include contactors, limit switches, crane controls, fire pump controls, transfer switches, motor controllers and resistors. Hubbell ICD has a device ideal for a wide range of applications. And if it's from Hubbell, you know you're getting amazingly reliable technology.



hubbell industrial controls, inc.

Spec Tech Industrial 203 Vest Ave. Valley Park, MO 63088 Phone: 888 SPECTECH  
Email: sales@spectechind.com www.spectechind.com

It has a maximum interrupting rating of 2400 kW (within the limits of 2400 V maximum and 2400 A maximum) utilizing a non-polarized arc interruption system.

Highly reliable and consistent main contact closure is assured by its tri-furcated stationary main contact design, with wiping action. Silver alloy main contacts provide long life. Silver-plated copper terminals allow for excellent electrical connections and corrosion resistance. Non-tracking molded glass polyester parts provide high dielectric and mechanical strength, and zinc-dichromate plated non-current-carrying steel parts offer excellent corrosion resistance. Operating coils are of molded construction for protection from corrosion, foreign material and moisture contamination, and damaging physical abuse.

Front-accessible wear parts ease inspection, maintenance, and repair functions. A secure latch spring closure for arc chute is easily removed without the use of tools, while mechanical interlock prevents contact closure if arc chute is not properly installed.

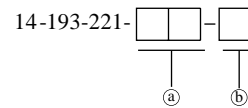
An optional four-circuit auxiliary contact block (total of eight auxiliary circuits are available on special order – consult factory) is available in any combination of normally open and normally closed circuits. Dual bifurcated, chisel-point moveable (H-bridge design) contacts of fine silver provide exceptionally high switching reliability and are suitable for low power signals.

## Product Listing

### Special Purpose – Type 716 Series

#### Ordering Information

> Catalogue Number as follows:



- Ⓐ Next two digits specify coil voltage per coil voltage suffix table.
- Ⓑ Last digit specifies auxiliary contact arrangement.

## Specifications

### Type 716

#### Main Pole Configuration

Single pole, normally open (SPNO)

#### Contact Rating

Continuous open air rating = 1600 Amps @ 40°C ambient  
Maximum break current = 2400 Amps  
Maximum make current = 10,000 Amps  
Maximum interrupting capacity = 2400kW (within limits of 2400 Amps, and 2400 V MAX)  
Thru-Current Capability = 30,000 Amps  
Special ratings available. Consult factory.

#### Auxiliary Interlock Rating

Resistance Load  
125 VDC or less, 10 Amps  
250 VDC, 2.5 Amps

#### Mounting

Mounts on 3 in. (76.2 mm) wide support with three 3/8 in. (M8) screws

#### Arc Chute Clearance

3 in. min. (face to nearest conductive surface)

#### Power Connections

Top and bottom of contactor  
Two 3/8 in.–16 tapped holes per terminal

#### Coil Connections

Four 1/4 in. fastons  
Two tabs each side of line

#### Auxiliary Contact Connections

Two 1/4 in. (6.35 mm) faston tabs per terminals

#### Weight

53 lbs. (24 kg)

### Coil Suffix Table

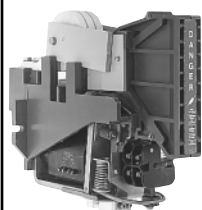
DC Volts Coil Voltage	Suffix
12	51
28	52
36	55
48	54
74	56
96	57
125	58
250	59

### Auxiliary Contacts <sup>ab</sup>

Configuration	Code
1 NO & 3 NC	1
2 NO & 2 NC	2
3 NO & 1 NC	3
4 NO & 0 NC	4
0 NO & 4 NC	5
None	7

Illustration	Description	Configuration	Rated Voltage	Catalogue No.	Approx. Wt. Lbs (Kg)
--------------	-------------	---------------	---------------	---------------	-------------------------

Type 716, 1600 Ampere



TYPE 716

Contactor without auxiliary contact <sup>a</sup>	Single pole, normally open contactor	1500 V	14-193-221-====	60 (27.2)
--	--------------------------------------	--------	-----------------	-----------

<sup>a</sup> A maximum of two 4 circuit auxiliaries may be added. Consult factory.

<sup>b</sup> Special configurations available. Consult factory.

### Operating Coils

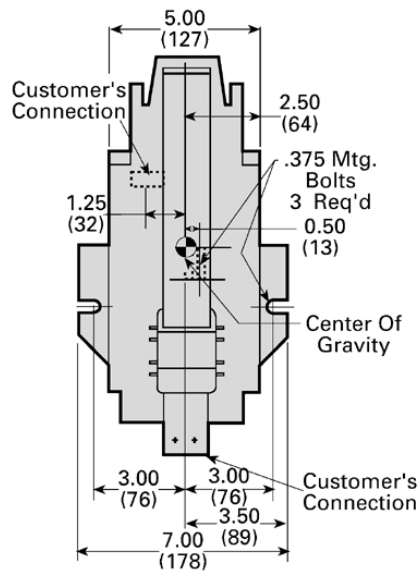
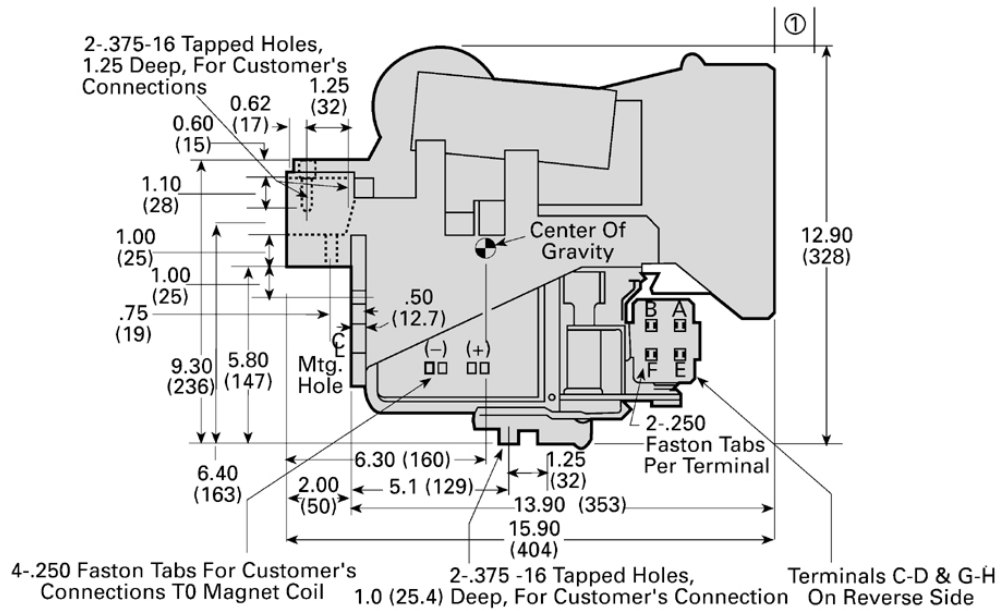
Volts DC	Ohms (20°C)
12	3.1
24	12
36	26
48	41
74	120
96	173
125	270
250	1044

Coil voltage tolerance 80% to 110% of rated voltage.

Minimum pickup voltage is 60% of rated coil volts, with cold (20°) coil and 80% of rated coil volts with hot (140°) coil. Dropout is from 5% to 25% of rated coil volts. All temperatures in °C.

# Outline Drawings

Special Purpose – Type 716



① Electrical clearance to ground 3.00 (76).

All dimensions shown in inches. For reference purposes only. Not to be used for design or construction purposes.



**Hubbell Industrial Controls, Inc.**

A subsidiary of Hubbell Incorporated

4301 Cheyenne Dr., Archdale, NC 27262

Telephone (336) 434-2800 • Fax (336) 434-2803

<http://www.hubbell-icd.com>

[Sales@hubbell-icd.com](mailto:Sales@hubbell-icd.com)