



5600 SERIES RELAY DATA SHEET

Series 5600 Relays were developed especially for use as safe, reliable, economical original equipment components in many different types of commercial and industrial products. Designed to operate from electrodes or probes contacting conductive liquids, they are ideally suited to level control applications in such products as vending, dispensing and ice-making machines – water softeners, dishwashers, coffee makers – plus many types of operating equipment in the food, drug, dairy, brewing, distilling and chemical processing industries. In addition, Series 5600 Relays have a low energy sensing circuit with a lock-in holding feature that permits operation over a range of levels, or from momentary contact pilot devices such as float, flow, pressure and limit switches, thermostats and pushbutton actuators, etc. Thus they are equally suitable for use as original equipment components in many products and systems that require monitoring and control of such process variables as temperature, pressure, humidity, flow, voltage and current, etc.

OTHER FEATURES AND ADVANTAGES

- Choice of direct or inverse operation to provide fail-safe control
- UL Recognized Component File No. E 67365
- In *direct* operation, load relay is *energized* when the low voltage dc sensing circuit is completed. In *inverse* operation, load relay is *de-energized* when the low voltage dc sensing circuit is completed.

SPECIFICATIONS

Input Voltage:

- 120 VAC 50/60 Hz
- 240 VAC 50/60 Hz
- 24 VAC 50/60 Hz
- 12 VDC
- 24 VDC

Power Consumption:

4 Volt-Amperes, 2 watt Max.

Contact Rating:

- 10 amperes resistive load at 120 VAC
- 1/3 HP at 120 VAC
- 6 amperes resistive load 240 VAC
- 6 amperes resistive load at 28 VDC

Output Contact Arrangement:

Single pole, double throw
Gold-flashed silver cadmium oxide

Ambient Temperatures:

- 40° F to 150° F
- 40° C to 65.5° C

Sensing Circuit:

17.5 volts DC open circuit,
400 micro-amperes short circuit.

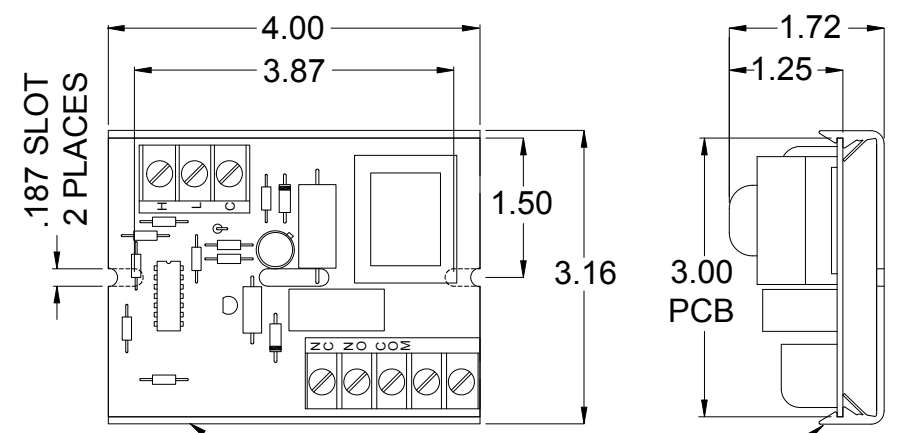
Includes a lock-in feature for greater Versatility

Sensitivity

50,000 ohms fixed is standard, other sensitivities, fixed or adjustable, are available on special order.



DIMENSIONAL DATA



PVC SNAP-IN MOUNTING TRACK



1080 North Crooks Road • Clawson, MI 48017
Phone 248-435-0700 Toll Free 800-635-0289
Fax 248-435-8120 www.ametekapt.com

Spec Tech Industrial 203 Vest Ave. Valley Park, MO 63088
Toll Free: 888 SPECTECH Email: sales@spectechind.com

www.spectechind.com

5600 SERIES SPECIAL PURPOSE RELAY CATALOG NUMBERS

PART NUMBER	RELAY DESCRIPTION	RELAY VOLTAGE
56110000	Direct Operation	120 VAC
56111000	Direct Operation	240 VAC
56112000	Direct Operation	12 VDC
56113000	Direct Operation	24 VDC
56114000	Direct Operation	24 VAC
56120000	Inverse Operation	120 VAC
56121000	Inverse Operation	240 VAC
56122000	Inverse Operation	12 VDC
56123000	Inverse Operation	24 VDC
56124000	Inverse Operation	24 VAC

NOTE: When ordering, please specify Type 5600-11 relays for direct operation applications, and type 5600-12 relays for inverse operation.

- All line voltage circuits are isolated from the low voltage dc sensing circuit to assure optimum safety in service.
- Low voltage dc sensing circuit also permits location of relays several thousand feet from electrodes or remote pilot devices.
- Relays will operate reliably when mounted in any position required to meet a complete range of application design requirements.
- Barrier-type terminal blocks with saddle clamp screw terminals for 12 to 18 gauge wire are standard. Quick-disconnect tabs or other wiring terminals can also be supplied to meet specific application requirements.
- Load contacts are covered with a clear plastic housing to protect against dust and moisture to assure reliable long-life operation.

TYPICAL APPLICATIONS

The diagrams below illustrate basic details of typical applications in which Series 5600 Relays are used as original equipment components to provide fail-safe control by de-energizing the load in event of power or relay failure. In Diagram A, Type 5600-11 Relay is used for *direct* operation to provide automatic *pump down* control for dehumidifiers, sumps or any other product requiring control of a liquid at a given high level set point. In Diagram B, a Type 5600-12 Relay is used for *inverse* operation to provide *pump-up* control for carbonators, humidifiers, purification stills, etc. where liquid must be kept above a low level set point. Diagram C shows use of a Type 5600-11 Relay for direct operation to provide low level alarm and/or cut-off with lock-in and manual reset for automatic dispensing, bottling and mixing machines. Diagram D shows direct operation from a transducer or any other pilot device to perform specific control functions required by many commercial and industrial products.

INSTALLATION NOTES

Because Series 5600 Relay features a low voltage, low current sensing circuit, inexpensive small gauge lead wires may be used between relays and electrodes, sensors, or pilot switching devices. Shielded cables are not required, and lead wires do not have to be isolated from other wiring. Also, in many level control applications, a common electrode is not required so long as a good, dependable metallic ground return from the relay to the liquid is provided.

TYPICAL APPLICATION DIAGRAMS

DIAGRAM A: PUMP DOWN CONTROL - 5600-11 DIRECT OPERATION

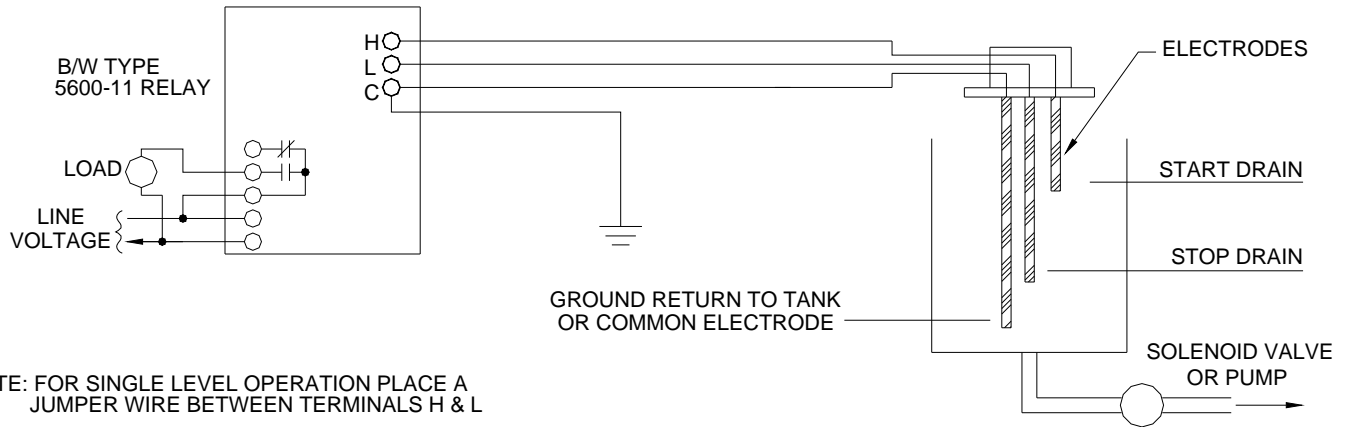


DIAGRAM B: PUMP UP CONTROL - 5600-12 INVERSE OPERATION

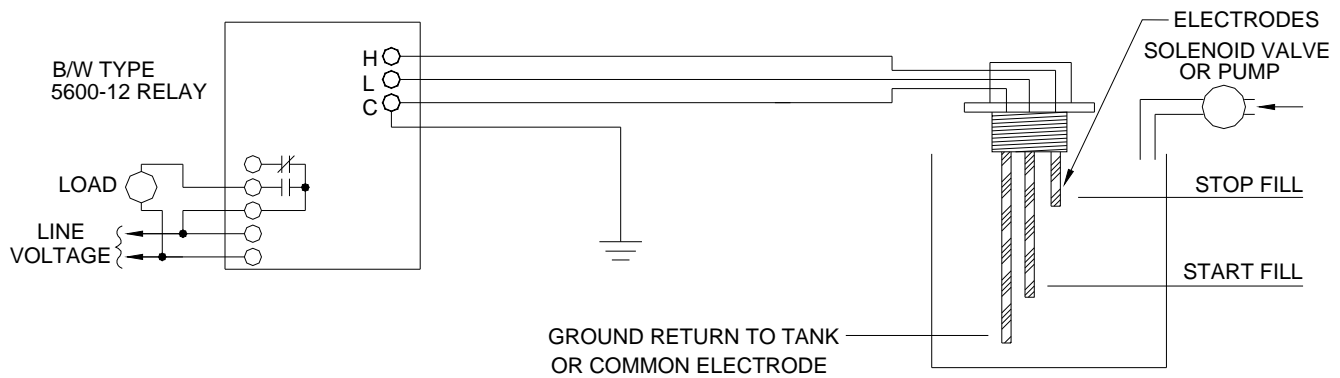


DIAGRAM C: LOW LEVEL ALARM OR CUT OFF - 5600-11 DIRECT OPERATION - WITH LOCK-IN & RESET PUSHBUTTON

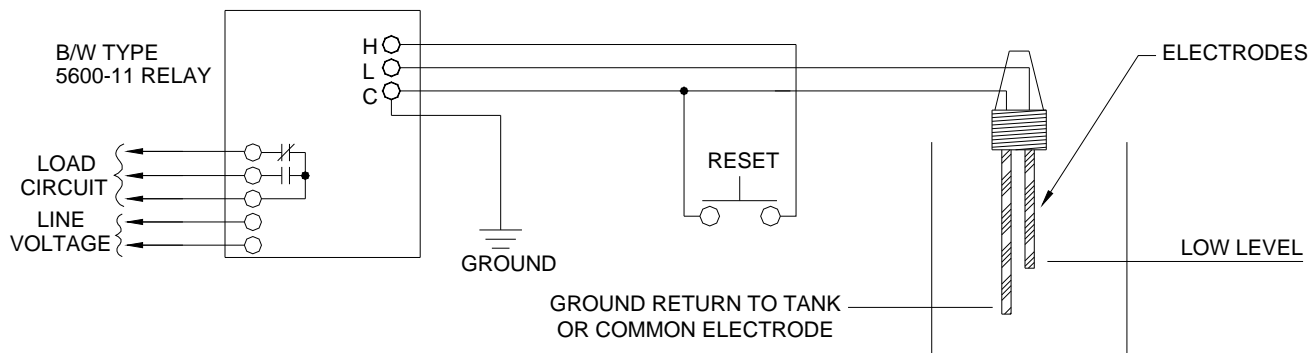


DIAGRAM D: CONTROL FROM RESISTIVE TRANSDUCER - 5600-11 DIRECT OPERATION - LOAD ACTUATION ON DECREASING RESISTANCE

