



Series 120

# Motogard

Installation Instructions

---

## CONNECTIONS

### **Power Connections:**

Connect 120/240 VAC to input terminals 1 and 2.

### **Sensor Connections:**

1. Connect one lead of each thermistor to Terminals 6, 7, and 8, respectively.
2. Connect other lead of each Thermistors to common terminal 5.
3. Maximum number of Thermistors in **parallel**: Three (3)

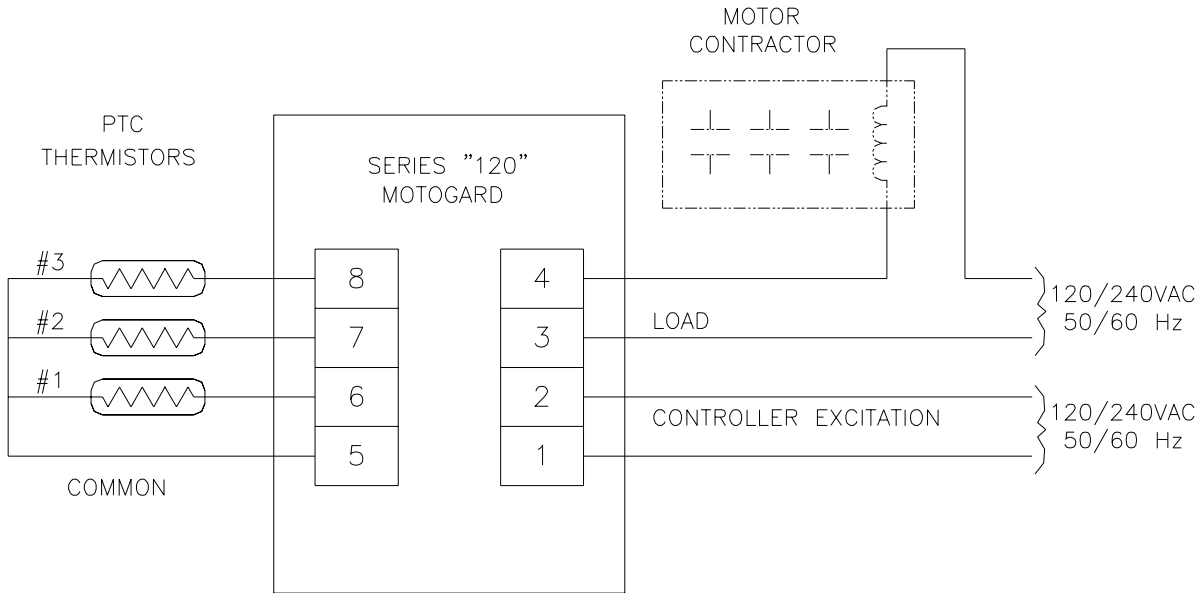
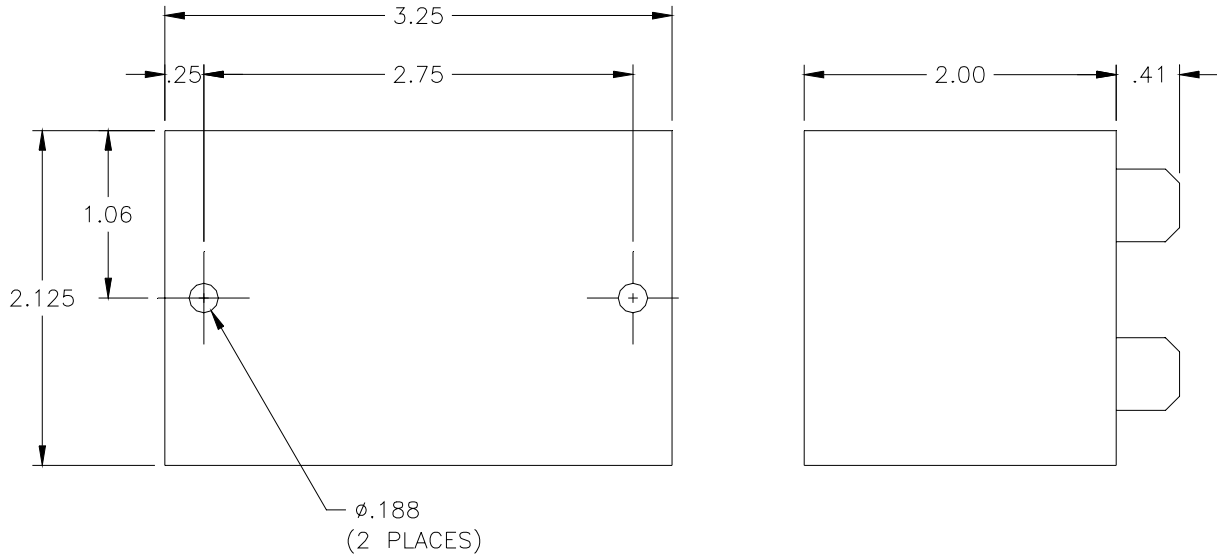
### **Output Load Connections:**

1. With power applied to the controller and all input sensors in their low impedance states. Terminals 3 and 4 become the equivalent to a closed contact of an electromechanical relay.
2. Be sure power is never applied directly across contacts but always in series with a load.
3. Maximum allowable load - **3 amps at 115 VAC**
4. The closed output of the Motogard Over Temperature Protection System has been specifically designed to operate directly in series with most main line contactors. If a small interposing relay must be used, the sealed burden should be greater than 10VA.

See opposite side for possible wiring option.

# Series "120" Motogard

Three (3) Thermistors in parallel



1080 N. Crooks Road • Clawson, MI 48017  
 800-635-0289 • 248-435-0700 • Fax 248-435-8120  
 www.ametekapt.com • www.ametek.com

929  
 120.I1R  
 07/02.Z90  
 1C