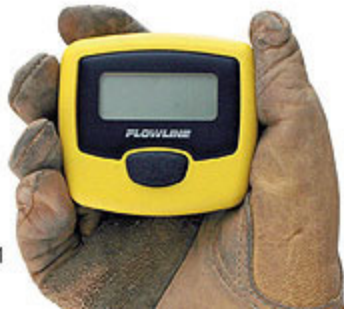


## MicroPoint Multi-Channel Indicator with Alarms



LI4\_-1001  
Shown



### Application

Factory calibrated, the general purpose indicator reads 0-100% of span with two or four sensor input channels. A single push button allows users to scroll through their active channels. With the optional MicroCal PC calibration kit, users can customize engineering units, configure FET alarm set points, and/or linearize the volumetric measurement of odd shaped tanks. Select the 2 channel for loop insertion with PLC's and the 4 channel for stand alone indication.

### Features

- Compatible with two-wire level transmitter, switch and leak detection sensors
- Alarms can be configured for high level, low level, out-of-bounds level or leak
- Compact NEMA 4X enclosure supports panel and wall mount installations
- Adjustable LED backlight for use at night or in dimly lit applications

### Specifications

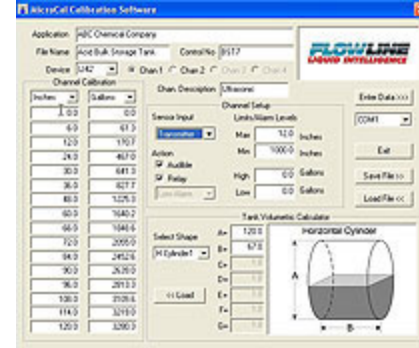
Display type :	LCD, 5-digit
Display units:	Factory cal: % of span PC cal: engineering*
Display output:	Transmitter: 0-99999 Switch: Good / Alarm*
Display backlight:	LED bar (adjustable)
Linearization:*	2-16 point function
Input channels:	LI42: (2) 4-20mA LI44: (4) 4-20mA
Supply voltage:	12-24 VDC
PC-cal. interface:*	USB® adaptor w/cable
PC-cal. software:*	MicroCal (Windows®)
Memory:	Non-volatile
Alarm type:*	LI42: (2) FET switches with opt. audible chirp LI44: (1) FET switch with opt. audible chirp
Alarm set points:*	1 point: alarm 2 points: out of bounds
Switch rating:	1A @ 24 VDC
Switch output:*	Normally open
Operating temp.:	F: -4° to 140° C: -20° to 60°
Cable length:	10' (3m)
Enclosure rating:	NEMA 4X (IP65)
Enclosure mat'l.:	PC/ABS FR
Classification:	General purpose
* Requires the LI96-1001 MicroCal calibration kit	

### Calibration

Your indicator may be configured in less than a minute using the



MicroCal PC calibration kit. User configuration files are retained for indicator cloning and record keeping. It's level indication made simple!



## Part Numbers

- LI24-1001
- LI44-1001

LI4    -1001

Sensor input channels (1) (2) (3)  
 2 2 channels (transmitter or switch)  
 4 4 channels (transmitter or switch)

### Ordering Notes

- 1) For indicator and loop power, order the LC95-1001 (120 VAC) or LC96-1001 (240 VAC) power supply (24 VDC @ 0.6A).
- 2) Factory calibrated, the indicator displays % of span with transmitter inputs only and no alarm set points.
- 3) Order the LI96-1001 MicroCal PC calibration kit to display engineering units, configure alarm set points from transmitter and switch inputs, and/or linearize the volumetric measurement of odd shaped tanks. Each kit includes (1) PC Windows® based MicroCal software CD and (1) USB to RS485 adapter with 1m cable.

203 Vest Avenue  
 Valley Park, MO 63088

Toll Free: (888) SPECTECH  
 Phone: (636) 537-0202

Fax: (636) 537-1405  
 E-Mail: sales@spectechind.com