



Replacement Parts

58-GC5027

January, 2000
Supersedes Issue of
July, 1982

Cam Switch
Non-Reversing - 2 Speed - 3 Phase
Single Winding, Constant, Or Variable Torque
C5027 & C5027B

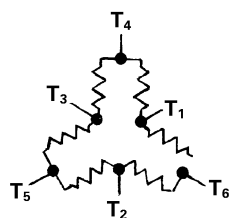
INTERNAL CONNECTIONS

Low Speed Interlock Closed

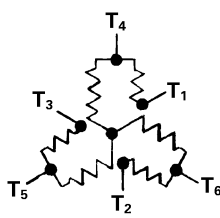
L1 - T1
L2 - T2
L3 - T3

High Speed Interlock Closed

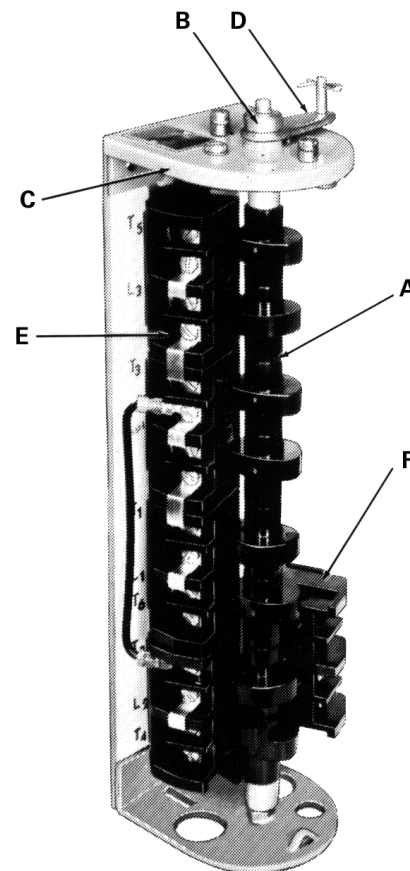
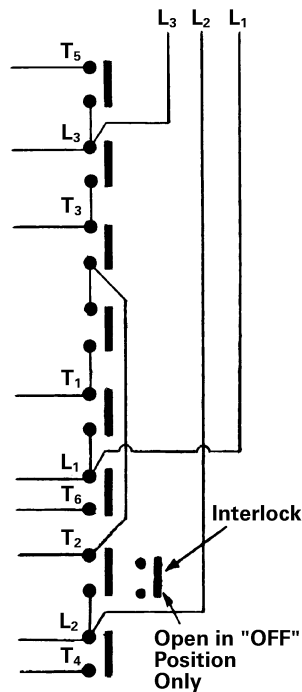
L1 - T6
L2 - T4
L3 - T5
Together
T1 - T2 - T3



Constant Torque



Variable Torque



Item	Part Name	Cat. No.	No. Req'd	Part Number
A	Rotor Assembly	C5027 C5027B	1 1	D50073001 D51902001
B	Roller Lever Assembly		1	D10288001
C	Index Spring		1	D06171002
D	Lever Assembly		1	D17811001
E	Contact Board - 2 Pole		4	D50542001
F	Contact Board - 1 Pole		1	D72145010

NOTE: When ordering replacement parts, give catalog number of control and part number.

(For Engineering Reference Only - Rev. B)