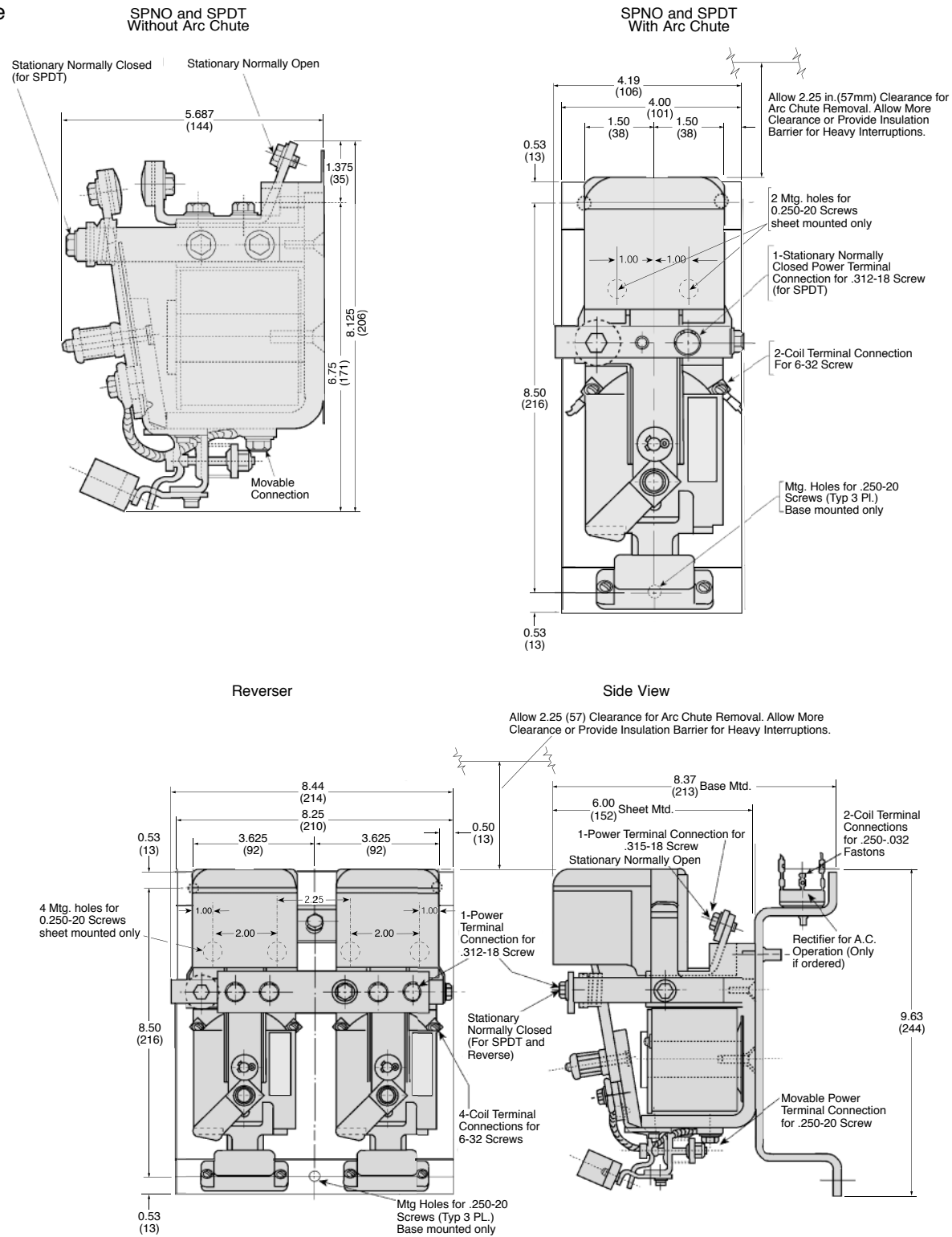


Outline Drawings

Special Purpose
Type 264

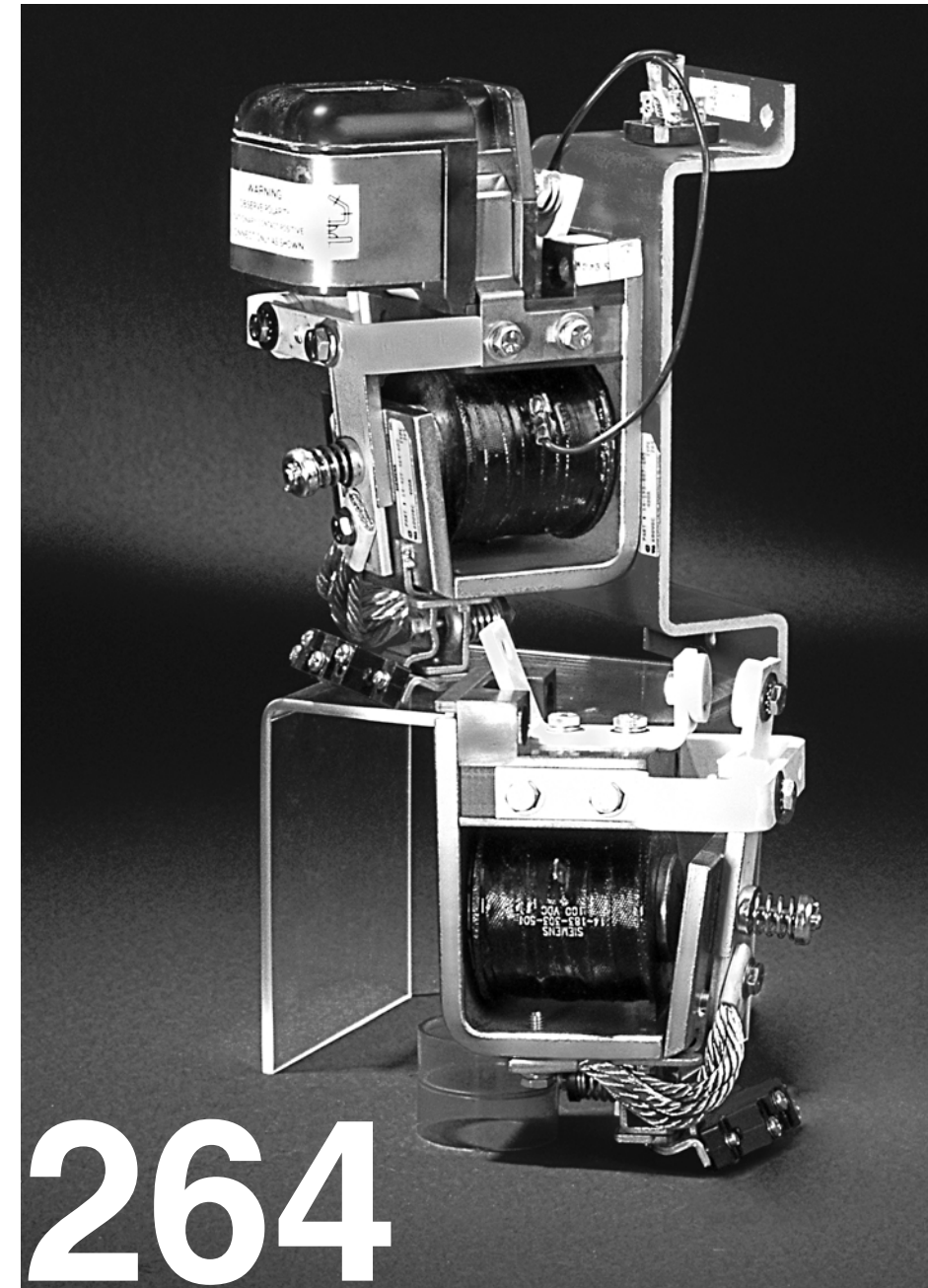


All dimensions shown in inches and (millimeters). For reference purposes only. Not to be used for design or construction purposes.

Spec Tech Industrial 203 Vest Ave. Valley Park, MO 63088 Phone: 888 SPECTECH
Email: sales@spectechind.com www.spectechind.com

Hubbell Industrial Controls, Inc.
Type 264 400 Ampere 600 Volt DC Contactor
Catalog 42264 • September 2005

42264
Application/Model List

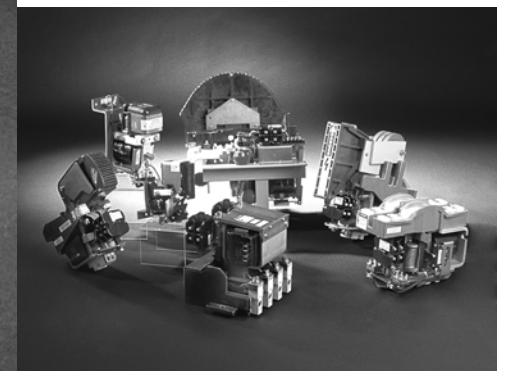


264 DC CONTACTOR

Highlights

- Permanent magnet (polarized) arc chutes
- Main contact options: SPNO, SPDT, Series Field Reverser
- Silver alloy main contact tips
- Two-million-cycle mechanical life
- Front access for serviceability
- UL recognized/CSA certified

Part of a family of rugged, industrial-quality, definite-purpose units, the Type 264 is ideal for use with solid-state adjustable speed drives, uninterruptible power supplies, fuel cells, crane controls, and mining machinery.



Amazingly Reliable – Hubbell Industrial Controls Devices

The Hubbell ICD family of rugged, high-performance DC devices are in great demand by industries needing reliable, solid state, adjustable controls. Products include contactors, limit switches, crane controls, fire pump controls, transfer switches, motor controllers and resistors. Hubbell ICD has a device ideal for a wide range of applications. And if it's from Hubbell, you know you're getting amazingly reliable technology.



hubbell industrial controls, inc.

Spec Tech Industrial 203 Vest Ave. Valley Park, MO 63088 Phone: 888 SPECTECH
Email: sales@spectechind.com www.spectechind.com

Table One



Illustration	Description	Catalogue No	Without Auxiliary Contacts Type	Approx. Ship Wt. Lbs (Kg)
Type 264				
 WITHOUT ARC CHUTE  WITH ARC CHUTE	A. Contactor without Arc Chute ^a Sheet Mounted DC Operation	14-428-131-+++	SPNO SPDT REV ^{de}	10 (4.5) 10 (4.5) 20 (9.0)
	B. Contactor with Arc Chute ^b			
	1. Sheet Mounted ^a DC Operation		SPNO	12.6 (5.7)
	a. Positive Arc Chute Polarity	14-429-464-+++	SPDT	12.6 (5.7)
	b. Negative Arc Chute Polarity	14-429-470-+++	REV ^{de}	25.2 (11.4)
	2. Base Mounted DC Operation		SPNO	
	a. Positive Arc Chute Polarity	14-193-805-+++	SPDT	12.6 (5.7)
	b. Negative Arc Chute Polarity	14-193-806-+++	REV ^{de}	25.2 (11.4)
	3. Base Mounted with Rectifier for AC Operation ^{cf}		SPNO	12.6 (5.7)
	a. Positive Arc Chute Polarity	14-193-807-+++	SPDT	12.6 (5.7)
b. Negative Arc Chute Polarity	14-193-805-+++	REV ^{de}	25.2 (11.4)	

Table Two

Main Contacts	Complete Last Three Digits of Catalogue Number from this Table Coil Voltage (Volts DC)									Auxiliary Contacts ^d		
	12	24	36	48	74	100	125	250	None	1NO&1NC	2NO&2NC	
SPNO	561	504	501	502	503	562	563	564	Yes	—	—	
1 NO	566	567	506	507	508	569	509	510	—	Yes	—	
	571	572	511	512	513	574	514	515	—	—	Yes	
SPDT	591	592	531	532	533	594	534	535	Yes	—	—	
1NO&1NC	601	602	536	537	538	605	539	540	—	Yes	—	
	606	607	541	542	543	609	544	545	—	—	Yes	
REV	611	612	546	547	548	614	549	550	Yes	—	—	
2-SPDT ^d	616	617	551	552	553	619	554	555	—	Yes	—	
2NO&2NC	621	622	556	557	558	624	559	560	—	—	Yes	

Connection Diagrams

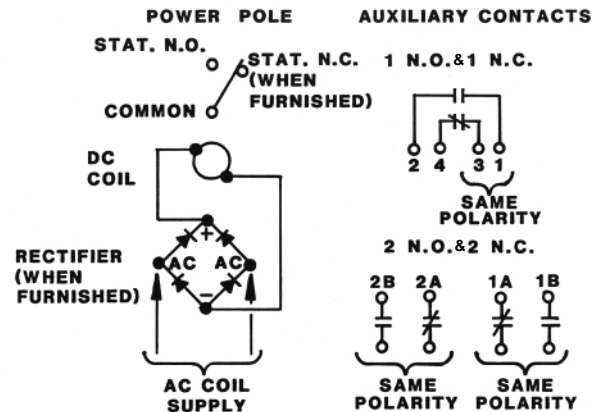
Main Contact Rating*

Description	Normally Open	Normally Closed
Continuous Carry Current Convection Cooled	425 Amps	400
Maximum Make Rating	2000 Amps, 600V DC	2000, 500V DC
Maximum Break Rating (Resistive Load, consult Factory for inductive loads).		
Without Arc Chute	2000 Amps, 48V DC	—
With Arc Chute	1000 Amps, 500V DC	—
	2000 Amps, 300V DC	—

Arc chute is permanent magnet type. Polarities must be observed.

Auxiliary Contacts

Configuration	Continuous Current	Make and Break
1 NO & 1 NC**	15 Amps	15 Amps, 600V AC, resistive 0.4 Amps, 115V DC, inductive 0.2 Amps, 230V DC, inductive
2 NO & 2 NC**	10 Amps	10 Amps, 600V AC, resistive 0.2 Amps, 115V DC, inductive 0.1 Amps, 230V DC, inductive

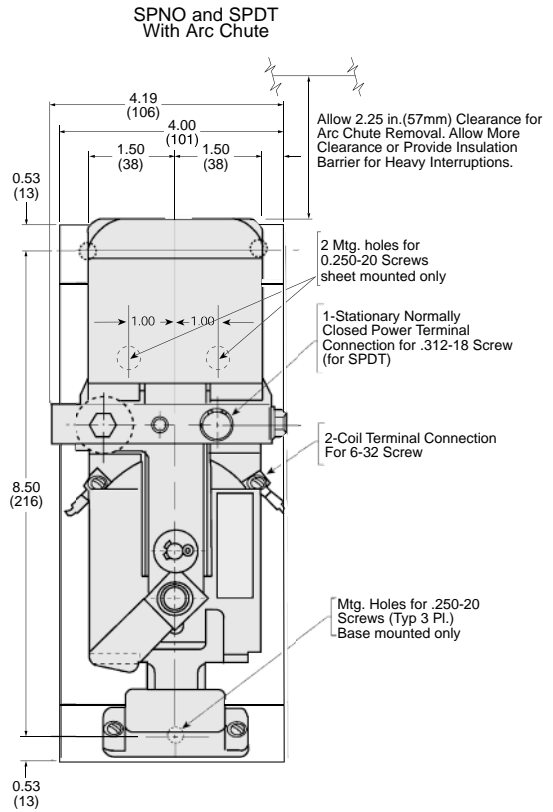
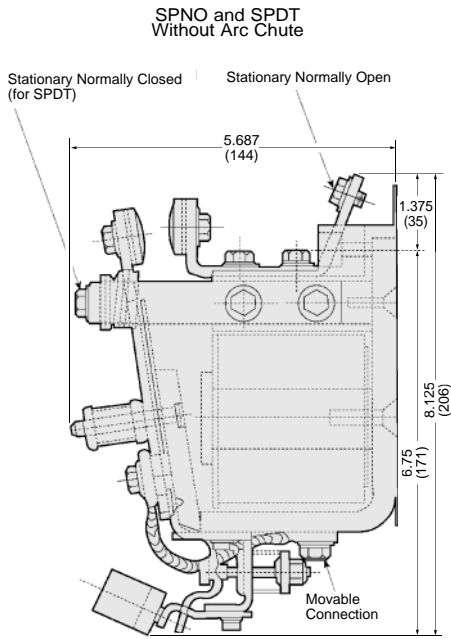


* Resistive load – consult sales office for inductive load break ratings. For arc chute spacings to ground, consult sales office.

** Each normally open and normally closed pair must be wired to the same side of the same supply (same polarity).

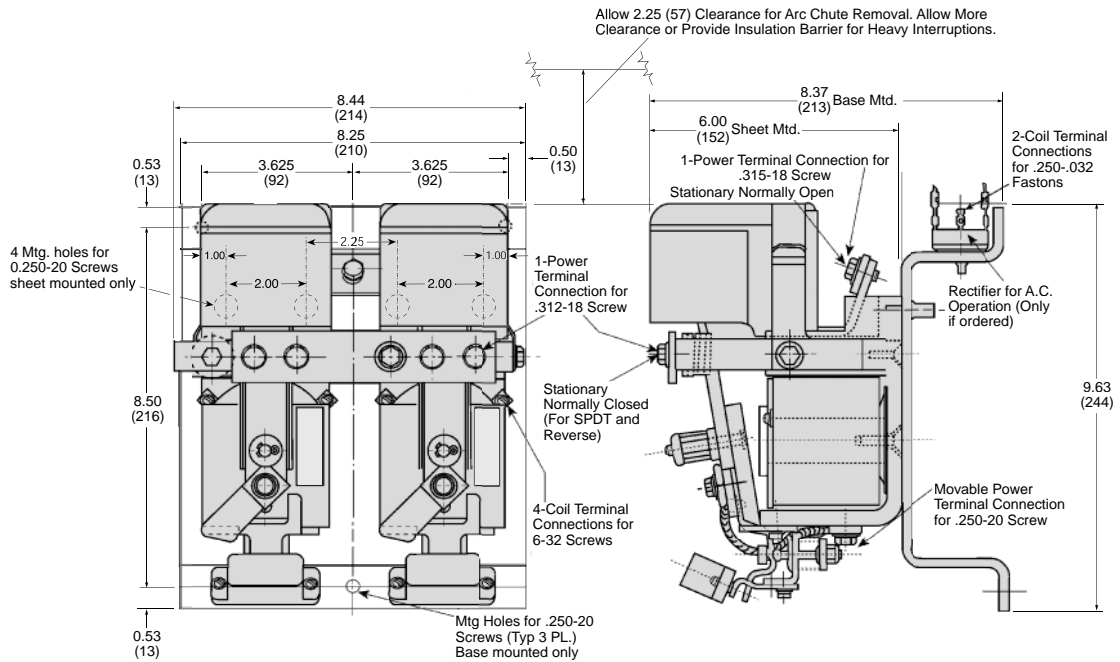
Outline Drawings

Special Purpose
Type 264



Reverser

Side View



All dimensions shown in inches and (millimeters). For reference purposes only. Not to be used for design or construction purposes.



Hubbell Industrial Controls, Inc.

A subsidiary of Hubbell Incorporated

4301 Cheyenne Dr., Archdale, NC 27262

Telephone (336) 434-2800 • Fax (336) 434-2803

<http://www.hubbell-icd.com>

Sales@hubbell-icd.com