



Series 120

Motogard

Installation Instructions

CONNECTIONS

Power Connections:

Connect 120/240 VAC to input terminals 1 and 2.

Sensor Connections:

1. Connect one lead of each thermistor to Terminals 6, 7, and 8, respectively.
2. Connect other lead of each Thermistors to common terminal 5.
3. Maximum number of Thermistors in **parallel**: Three (3)

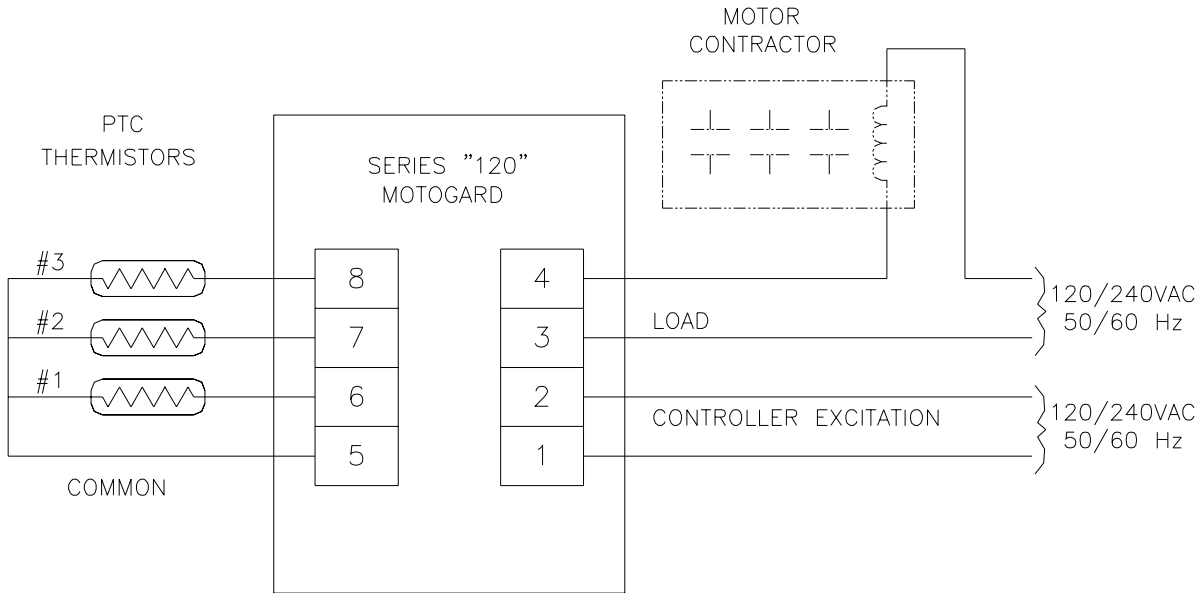
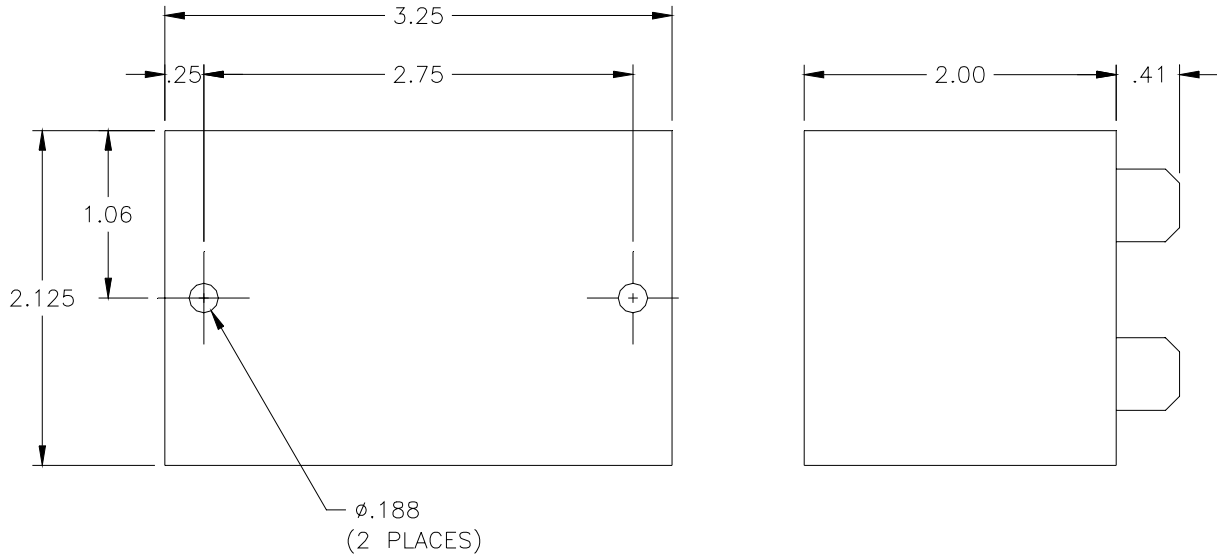
Output Load Connections:

1. With power applied to the controller and all input sensors in their low impedance states. Terminals 3 and 4 become the equivalent to a closed contact of an electromechanical relay.
2. Be sure power is never applied directly across contacts but always in series with a load.
3. Maximum allowable load - **3 amps at 115 VAC**
4. The closed output of the Motogard Over Temperature Protection System has been specifically designed to operate directly in series with most main line contactors. If a small interposing relay must be used, the sealed burden should be greater than 10VA.

See opposite side for possible wiring option.

Series "120" Motogard

Three (3) Thermistors in parallel



1080 N. Crooks Road • Clawson, MI 48017
 800-635-0289 • 248-435-0700 • Fax 248-435-8120
 www.ametekapt.com • www.ametek.com

929
 120.I1R
 07/02.Z90
 1C