

DS



Features and Ratings	p. 36
DS20	p. 37
DS30	p. 39
DS60	p. 41
DS100C	p. 43
DS100	p. 45
DS200	p. 47
Spare parts	p. 49
Dimensions	p. 51



Switch rated plugs and receptacles

DS Series Decontactors provide a useful combination of capacity and ruggedness. DS are often used to connect motors and welders in the metals, quarry, automotive, and mining industries. They are designed for applications requiring large wiring capacities. The DS's environmental rating is achieved as soon as the plug and receptacle are fully engaged, making them an excellent choice for outdoor applications where rainproof performance is required.

Main Advantages

- ▶ Switch & Hp rated (AC only)
- ▶ 65 kA to 100 kA short circuit rated*
- ▶ Up to 6 auxiliary contacts
- ▶ Amperage ratings up to 200A
- ▶ Metal or Poly construction

Highlighted Advantage

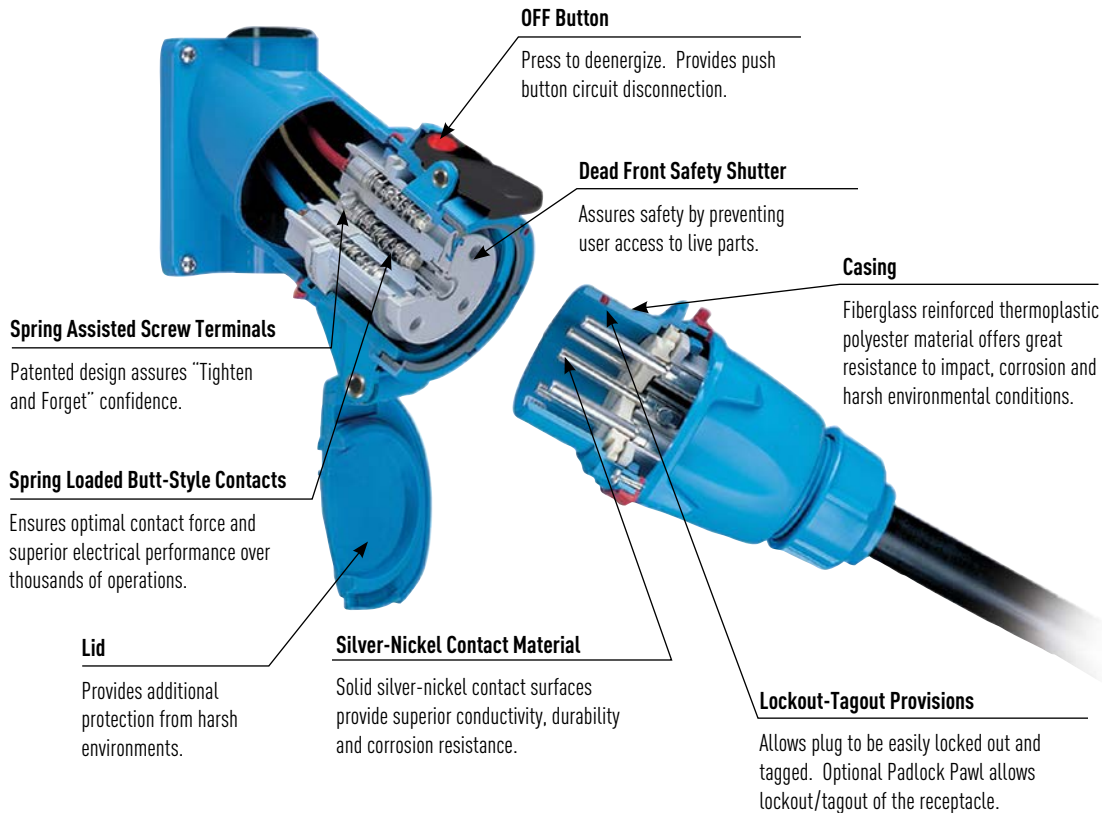
Simplify Compliance to
NFPA 70E & CSA Z462

See pgs 19-20 for
more information



* See note under General Ratings on the next page

Product Features



General Ratings

Amperage	20 to 200A
Voltage	600 VAC (480 VAC for DS200)
Frequency	50-400 Hz
Horsepower	1/2 to 25 hp
Short-Circuit (Make & Withstand)	65kA to 100kA*
Environmental	Type 3R, IP54/IP55**, Type 4X optional
Temperature	min -40°F/max 140°F

* DS20, 30, 60 & 100C are rated 100kA. Testing was performed with RK1 current limiting fuses sized at 400% of the highest full load motor ampacity associated with the devices hp rating.

* DS100 & 200 are rated 65kA. Testing was performed with RK5 time delay fuses sized at 100% of the devices rated ampacity.

** IP54 rated when receptacle and plug are mated, when not mated receptacle alone is IP55 provided that the lid is latched closed.

Listings

Category	UL	CSA	IEC
Plugs and Receptacles	UL 1682	C22.2 No. 182.1	60309-1
Branch Circuit Disconnect Switching (AC only)	UL Subject 2682 (Performance tests from UL 98)	UL Subject 2682	60947-3, AC22, AC23
Motor Circuit Disconnect Switching (AC only)	UL Subject 2682 (Performance tests from UL 508)	UL Subject 2682	

CE ratings available upon request

Operating Instructions



When the plug and receptacle are latched together, the circuit is connected.



Pressing the pawl causes the DECONTACTOR to break the circuit. The plug is ejected to its rest position; its contacts are now dead.



Rotating the 'dead' plug 30° counterclockwise closes the safety shutter and frees the plug to be withdrawn from the receptacle.

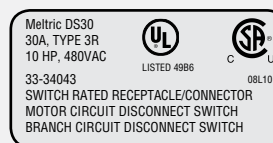


The plug and the receptacle are separated. The safety shutter prevents access to live parts.

5 To reconnect, insert plug into receptacle, rotate 30° clockwise, and apply insertion force.

Highlighted Feature

Typical Device Labels



DS Decontactors are UL & CSA rated for "motor circuit" and "branch circuit" disconnect switching – up to 25 hp and up to 200A

DS20



DECONTACTOR™ – 20A

Switch Rated Plugs & Receptacles

Ratings

- Voltage**
600 VAC
- Switch Rating (AC Only)**
Branch Circuit & Motor Circuit
Disconnect Switching
- Horsepower Ratings**

120V	1Ø	1/2 hp
208V	3Ø	3 hp
240V	3Ø	3 hp
480V	3Ø	5 hp
600V	3Ø	7 1/2 hp
- Short Circuit Rating**
100kA Close & Withstand
Testing was performed with RK1 current limiting fuses sized at 400% of the highest full load motor ampacity associated with the devices hp rating.
- Environmental Ratings**
Type 3R, IP54/IP55*
* IP54 when the plug & receptacle are mated. IP55 on the receptacle alone when the lid is latched closed.
- Temperature Range**
Min -40°F/Max 140°F
See pg 220 for temps below -15°F.
- Wiring Capacity**
Min 14 AWG Max 8 AWG
Aux Contact - Max 14 AWG
- Listings**
UL, CSA, IEC, CE*
* Contact Customer Service

Receptacle (female)



Don't forget to add installation accessories to your order



Inlet (male)



Voltage	Polarity	Part # Poly
120/208V	3P+N+G	33-14167
125V	1P+N+G	33-14075
125/250V	2P+N+G	33-14076
208V	2P+G	33-14162
208V	3P+G	33-14163
250V	2P+G	33-14072
250V	3P+G	33-14073
277V	1P+N+G	33-14045
277/480V	3P+N+G	33-14047
347/600V	3P+N+G	33-14147
480V	2P+G	33-14042
480V	3P+G	33-14043
600V	2P+G	33-14142
600V	3P+G	33-14143

Voltage	Polarity	Part # Poly
120/208V	3P+N+G	33-18167
125V	1P+N+G	33-18075
125/250V	2P+N+G	33-18076
208V	2P+G	33-18162
208V	3P+G	33-18163
250V	2P+G	33-18072
250V	3P+G	33-18073
277V	1P+N+G	33-18045
277/480V	3P+N+G	33-18047
347/600V	3P+N+G	33-18147
480V	2P+G	33-18042
480V	3P+G	33-18043
600V	2P+G	33-18142
600V	3P+G	33-18143

Other voltage configurations are available – contact customer service at 800.433.7642.

Main Options



Auxiliary/Pilot Contacts



Mushroom Pawl



Padlock Pawl



Closed Lid Configuration
Recommended for cord applications to keep lid tucked in to avoid damage.

Receptacle Options

Suffix

With 2 Auxiliary/Pilot Contacts	Recept # - 972
Type 4X & closed lid configuration	Recept # - 4X
Straight Insertion	Recept # - 352
Self-Ejecting Connector Release	Recept # - 354
Mushroom Pawl	Recept # - 375
Padlock Pawl	Recept # - 843
Padlockable Mushroom Pawl	Recept # - 375-843
Locking Mushroom Pawl	Recept # - 845
Metal Pawl (on poly receptacle)	Recept # - 824
Closed Lid Configuration	Recept # - NC
With Auxiliary Switch	Recept # - 270*

Notes: * Not UL/CSA Listed

Inlet Options

Suffix

With 2 Auxiliary/Pilot Contacts	Inlet # - 972
Type 4X Watertightness	Inlet # - 4X
Self-Ejecting Plug Release	Inlet # - 338
With No Lockout Hole	Inlet # - A155
For Auxiliary Switch	Inlet # - NNF

Notes: * Order inlet with P+N+G configuration and receptacle with P+G configuration

DS20 Order Example:

To order 2 auxiliary/pilot contacts on an inlet and receptacle add **-972** to the part numbers.

DS20 Poly inlet 2P+G=33-18162-**972**

DS20 Poly receptacle 2P+G=33-14162-**972**
Appropriate accessory part numbers must also be included on the order.

Installation Accessories

Handles



Not Type 3R

NPT	Poly Handle	Cable Range	Nylon Handle	Neoprene Handle	Poly Handle w/Clamp & Bushing
1/2"	1PH12	.20 - .82	FH111	-	-
3/4"	1PH34	.32 - .88	-	31-111	-
1"	1PH1	.750 - .875	-	-	1PM514
1 1/4"	1PH114	.875 - 1.000	-	-	1PM516
		1.000 - 1.125	-	-	1PM518
		1.125 - 1.250	-	-	1PM520
		1.250 - 1.375	-	-	1PM522

- Notes:**
- Finger draw plates are recommended for easier connector closure on cord to cord assemblies.
 - For available cord grips, see pgs 193-194.

Angles



Nylon 30° Angle	Metal 30° Angle	Metal Angle FS/FD Box 30°	Metal Straight Adapter
MP2	MA2	MAFS2*	MS2

* MAFS2 base measures approximately 4.2" x 2.7". Due to the variation in sizes of FS boxes, please verify that your FS box matches our dimensions, if not call Customer Service for other solutions.

NPT Guidelines

Cable Range	NPT	Cable Range	NPT
.312 - .625	1/2"	.890 - 1.812	1 1/2"
.438 - .812	3/4"	1.190 - 2.438	2"
.660 - 1.000	1"	2.062 - 2.438	2 1/2"
.875 - 1.375	1 1/4"		

NPT sizes are determined by the cable diameter and third party cord grip.

Junction Boxes



28.7 in³

7.0 in³

83.5 in³

NPT	Metal Box	Metal Box with Nylon Angle	Poly* Conduit Entry	Poly 70°** Wall Box
1/2"	MB312	31-1A053-080-12	MC212	51-BA058
3/4"	MB334	31-1A053-080-34	MC234	51-BA058
1"	MB31	31-1A053-080-1	-	51-BA058
1 1/4"	MB3114	31-1A053-080-114	-	51-BA058

* For poly devices only

** 70° boxes are not drilled. Contact customer service if factory drilling is required.

* Interior volume with receptacle installed.

Miscellaneous Accessories



* Set of Two (2)



For Male Devices Only



For Male Devices Only



Mount to existing boxes

Finger Drawplates	Protective Cap	Padlockable Plug Cap Poly	Inlet Spring-Loaded Cap	Screwdriver for Terminal Screws	Easy Retrofit Adapter Plates
FDP2	31-1A126	DS1PC	31-1A226	SD18**	see pg 189

* Recommended for cord to cord assembly applications, for easier connector closure

** Klein 608-3 1/8" cabinet tip screwdriver with 3" round shank

Order Example

A typical order should include an inlet part number, a receptacle part number **AND** the matching handles, angles or other required accessories.



Male Inlet with Handle (Plug)
33-18075 + FH111



Female Receptacle with Angle Adapter
33-14075 + MP2

DS30

DECONTACTOR™ – 30A

Switch Rated Plugs & Receptacles

Ratings

- Voltage**
600 VAC
- Switch Rating (AC Only)**
Branch Circuit & Motor Circuit
Disconnect Switching
- Horsepower Ratings**

120V	1Ø	3/4 hp
240V	1Ø	2 hp
208V	3Ø	3 hp
240V	3Ø	3 hp
480V	3Ø	10 hp
600V	3Ø	10 hp
- Short Circuit Rating**
100kA Close & Withstand
Testing was performed with RK1 current limiting fuses sized at 400% of the highest full load motor ampacity associated with the device's hp rating.
- Environmental Ratings**
Type 3R, IP54/IP55*
* IP54 when the plug & receptacle are mated. IP55 on the receptacle alone when the lid is latched closed.
- Temperature Range**
Min -40°F/Max 140°F
See pg 220 for temps below -15°F.
- Wiring Capacity**
Min 14 AWG Max 6 AWG
Aux Contacts - Max 14 AWG
- Listings**
UL, CSA, IEC, CE*
* Contact Customer Service

Receptacle (female)



Don't forget to add installation accessories to your order



Inlet (male)



Voltage	Polarity	Part # Poly
120/208V	3P+N+G	33-34167
125V	1P+N+G	33-34075
125/250V	2P+N+G	33-34076
208V	2P+G	33-34162
208V	3P+G	33-34163
250V	2P+G	33-34072
250V	3P+G	33-34073
277V	1P+N+G	33-34045
277/480V	3P+N+G	33-34047
347/600V	3P+N+G	33-34147
480V	2P+G	33-34042
480V	3P+G	33-34043
600V	2P+G	33-34142
600V	3P+G	33-34143

Voltage	Polarity	Part # Poly
120/208V	3P+N+G	33-38167
125V	1P+N+G	33-38075
125/250V	2P+N+G	33-38076
208V	2P+G	33-38162
208V	3P+G	33-38163
250V	2P+G	33-38072
250V	3P+G	33-38073
277V	1P+N+G	33-38045
277/480V	3P+N+G	33-38047
347/600V	3P+N+G	33-38147
480V	2P+G	33-38042
480V	3P+G	33-38043
600V	2P+G	33-38142
600V	3P+G	33-38143

Other voltage configurations are available – contact customer service at 800.433.7642.

Main Options



Auxiliary/Pilot Contacts



Mushroom Pawl



Padlock Pawl



Closed Lid Configuration
Recommended for cord applications to keep lid tucked in to avoid damage.



See pgs 197-206 for detailed information on these options

Receptacle Options

Suffix

With 2 Auxiliary/Pilot Contacts	Recept # - 972
With 3 Auxiliary/Pilot Contacts	Recept # - 973*
With 4 Auxiliary/Pilot Contacts	Recept # - 974*
Type 4X & closed lid configuration	Recept # - 4X
Straight Insertion	Recept # - 352
Self-Ejecting Connector Release	Recept # - 354
Mushroom Pawl	Recept # - 375
Padlock Pawl	Recept # - 843
Padlockable Mushroom Pawl	Recept # - 375-843
Locking Mushroom Pawl	Recept # - 845
Metal Pawl (on poly receptacle)	Recept # - 824
Closed Lid Configuration	Recept # - NC
With Auxiliary Switch	Recept # - 270*

Notes: * Not UL/CSA Listed

Inlet Options

Suffix

With 2 Auxiliary/Pilot Contacts	Inlet # - 972
With 3 Auxiliary/Pilot Contacts	Inlet # - 973*
With 4 Auxiliary/Pilot Contacts	Inlet # - 974*
Type 4X Watertightness	Inlet # - 4X
Self-Ejecting Plug Release	Inlet # - 338
With No Lockout Hole	Inlet # - A155
For Auxiliary Switch*	Inlet # - NNF

Notes: * Order inlet with P+N+G configuration and receptacle with P+G configuration

DS30 Order Example:

To order 2 auxiliary contacts on an inlet and receptacle add **-972** to the part numbers.

DS30 Poly inlet 3P+G=33-38043-**972**

DS30 Poly receptacle 3P+G=33-34043-**972**

Appropriate accessory part numbers must also be included on the order.

Installation Accessories

Handles



Not Type 3R



Makes connector closures easier

NPT	Poly Handle	Cable Range	Nylon Handle	Neoprene Handle	Poly Handle w/Clamp & Bushing	Poly Handle w/built in Draw Grips
1/2"	3PH12	.38 - 1.12	-	31-311	-	-
3/4"	3PH34	.39 - 1.18	FH311	-	-	FH311-473
1"	3PH1	.750 - .875	-	-	3PM514	-
1 1/4"	3PH114	.875 - 1.000	-	-	3PM516	-
		1.000 - 1.125	-	-	3PM518	-
		1.125 - 1.250	-	-	3PM520	-
		1.250 - 1.375	-	-	3PM522	-

- Notes:**
- Finger draw plates are recommended for easier connector closure on cord to cord assemblies.
 - For available cord grips, see pgs 193-194.

Angles



Nylon 30° Angle	Metal 30° Angle	Metal 70° Angle	Metal Angle FS/FD Box 30°	Metal Straight Adapter
MP3	MA3	89-3A027	MAFS3*	MS3

* MAFS3 base measures approximately 4.2" x 2.7". Due to the variation in sizes of FS boxes, please verify that your FS box matches our dimensions, if not call Customer Service for other solutions.

NPT Guidelines

Cable Range	NPT	Cable Range	NPT
.312 - .625	1/2"	.890 - 1.812	1 1/2"
.438 - .812	3/4"	1.190 - 2.438	2"
.660 - 1.000	1"	2.062 - 2.438	2 1/2"
.875 - 1.375	1 1/4"		

NPT sizes are determined by the cable diameter and third party cord grip.

Junction Boxes



29.6 in³

13.5 in³

185.7 in³

NPT	Metal Box	Metal Box with Nylon Angle	Poly* Conduit Entry	Poly 70°*** Wall Box
1/2"	MB312	31-3A053-080-12	MC312	51-CA058
3/4"	MB334	31-3A053-080-34	MC334	51-CA058
1"	MB31	31-3A053-080-1	MC31	51-CA058
1 1/4"	MB3114	31-3A053-080-114	-	51-CA058

* For poly devices only

** 70° boxes are not drilled. Contact customer service if factory drilling is required.

* Interior volume with receptacle installed.

Miscellaneous Accessories



* Set of Two (2)



For Male Devices Only



For Male Devices Only



Inlet Spring-Loaded Cap



Cord Grip with Mesh



Mount to existing boxes

Finger Drawplates	Protective Cap	Padlockable Plug Cap Poly	Inlet Spring-Loaded Cap	Cord Grip with Mesh	Easy Retrofit Adapter Plates
FDP3	31-3A126	DS3PC	31-3A226	see pgs 193-194	see pg 189

* Recommended for cord to cord assembly applications, for easier connector closure

Order Example

A typical order should include an inlet part number, a receptacle part number **AND** the matching handles, angles or other required accessories.



Male Inlet with Handle (Plug)
33-38043 + FH311



Female Receptacle with Angle Adapter
33-34043 + MP3

DS60



DECONTACTOR™ – 60A

Switch Rated Plugs & Receptacles

Ratings

- Voltage**
600 VAC
- Switch Rating (AC Only)**
Branch Circuit & Motor Circuit
Disconnect Switching
- Horsepower Ratings**

120V	1Ø	2 hp
240V	1Ø	3 hp
208V	3Ø	7 1/2 hp
240V	3Ø	7 1/2 hp
480V	3Ø	20 hp
600V	3Ø	25 hp
- Short Circuit Rating**
100kA Close & Withstand
Testing was performed with RK1 current limiting fuses sized at 400% of the highest full load motor ampacity associated with the devices hp rating.
- Environmental Ratings**
Type 3R, IP54/IP55*
* IP54 when the plug & receptacle are mated. IP55 on the receptacle alone when the lid is latched closed.
- Temperature Range**
Min -40°F/Max 140°F
See pg 220 for temps below -15°F.
- Wiring Capacity**
Min 10 AWG Max 2 AWG
Aux Contacts - Max 14 AWG
- Listings**
UL, CSA, IEC, CE*
* Contact Customer Service

Receptacle (female)



Don't forget to add installation accessories to your order



Inlet (male)



Voltage	Polarity	Part # Poly	Metal
120/208V	3P+N+G	33-64167	37-64167
125V	1P+N+G	33-64075	37-64075
125/250V	2P+N+G	33-64076	37-64076
208V	2P+G	33-64162	37-64162
208V	3P+G	33-64163	37-64163
250V	2P+G	33-64072	37-64072
250V	3P+G	33-64073	37-64073
277V	1P+N+G	33-64045	37-64045
277/480V	3P+N+G	33-64047	37-64047
347/600V	3P+N+G	33-64147	37-64147
480V	2P+G	33-64042	37-64042
480V	3P+G	33-64043	37-64043
600V	2P+G	33-64142	37-64142
600V	3P+G	33-64143	37-64143

Voltage	Polarity	Part # Poly	Metal
120/208V	3P+N+G	33-68167	37-68167
125V	1P+N+G	33-68075	37-68075
125/250V	2P+N+G	33-68076	37-68076
208V	2P+G	33-68162	37-68162
208V	3P+G	33-68163	37-68163
250V	2P+G	33-68072	37-68072
250V	3P+G	33-68073	37-68073
277V	1P+N+G	33-68045	37-68045
277/480V	3P+N+G	33-68047	37-68047
347/600V	3P+N+G	33-68147	37-68147
480V	2P+G	33-68042	37-68042
480V	3P+G	33-68043	37-68043
600V	2P+G	33-68142	37-68142
600V	3P+G	33-68143	37-68143

Other voltage configurations are available – contact customer service at 800.433.7642.

Main Options



Auxiliary/Pilot Contacts



Mushroom Pawl



Padlock Pawl



Closed Lid Configuration
Recommended for cord applications to keep lid tucked in to avoid damage.

Receptacle Options

Suffix

With 2 Auxiliary/Pilot Contacts	Recept # - 972
With 3 Auxiliary/Pilot Contacts	Recept # - 263*
Type 4X & closed lid configuration	Recept # - 4X
Straight Insertion	Recept # - 352
Self-Ejecting Connector Release	Recept # - 354
Mushroom Pawl	Recept # - 375
Padlock Pawl	Recept # - 843
Padlockable Mushroom Pawl	Recept # - 375-843
Locking Mushroom Pawl	Recept # - 845
Metal Pawl (on poly receptacle)	Recept # - 824
Closed Lid Configuration	Recept # - NC
With Auxiliary Switch	Recept # - 270**

* Not available for metal devices, not UL/CSA listed

** Not UL/CSA listed

Inlet Options

Suffix

With 2 Auxiliary/Pilot Contacts	Inlet # - 972
With 3 Auxiliary/Pilot Contacts	Inlet # - 263*
Type 4X Watertightness	Inlet # - 4X
Self-Ejecting Plug Release	Inlet # - 338
With No Lockout Hole	Inlet # - A155
For Auxiliary Switch*	Inlet # - NNF

Notes: * Order inlet with P+N+G configuration and receptacle with P+G configuration

DS60 Order Example:

To order 2 auxiliary/pilot contacts on an inlet and receptacle add **-972** to the part numbers.

DS60 Poly inlet 3P+G=33-68043-**972**

DS60 Poly receptacle 3P+G=33-64043-**972**

Appropriate accessory part numbers must also be included on the order.

Installation Accessories

Unless indicated otherwise, accessories can be used with either poly or metal plugs and receptacles

Handles



Not Type 3R

Makes connector closures easier

NPT	Poly Handle	Metal* Handle	Cable Range	Nylon Handle	Neoprene Handle	Poly Handle w/Clamp & Bushing	Poly Handle w/built in Draw Grips
1/2"	6PH12	6H12	.50 - 1.25	-	31-611	-	-
3/4"	6PH34	6H34	.51 - 1.38	FH611	-	-	FH611-473
1"	6PH1	6H1	1.250 - 1.375	-	-	6PM622	-
1 1/4"	6PH114	6H114	1.438 - 1.562	-	-	6PM625	-
1 1/2"	6PH112	6H112	1.562 - 1.688	-	-	6PM627	-
			1.688 - 1.812	-	-	6PM629	-

Notes:

- For available cord grips, see pgs 193-194.
- * For metal devices only

- For a guideline of NPT sizes based on cable ranges, see DS30 on pg 40.

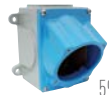
Angles



Nylon 30° Angle	Metal 30° Angle	Metal 70° Angle	Metal Angle+ Oversized 30°	Metal Straight Adapter	Metal Lateral Angle 30°
MP6	MA6	89-6A027	MA660	MS6	MAB6

* Mounts on oversize box only. Order with MB10 box. See page 46.

Junction Boxes



61.0 in³

59.4 in³

27.7 in³

183.5 in³

NPT	Metal Box	Metal Box with Nylon Angle	Metal Box with Metal Angle	Poly* Conduit Entry	Poly 70°** Wall Box
1/2"	-	-	-	MC612	51-DA058
3/4"	-	-	-	MC634	51-DA058
1"	MB61	31-6A053-080-1	39-6A053-080-1	MC61	51-DA058
1 1/4"	MB6114	31-6A053-080-114	39-6A053-080-114	MC6114	51-DA058
1 1/2"	MB6112	31-6A053-080-112	39-6A053-080-112	-	51-DA058
2"	MB62	31-6A053-080-2	39-6A053-080-2	-	51-DA058

* For poly devices only

** 70° boxes are not drilled. Contact customer service if factory drilling is required.

* Interior volume with receptacle installed.

Miscellaneous Accessories



Set of Two (2)



For Male Devices Only



For Male Devices Only



For Male Devices Only



Inlet Spring-Loaded cap



Cord Grip with Mesh

Finger Drawplates	Protective Cap	Padlockable Plug Cap Poly	Padlockable Cap Aluminum	Inlet Spring-Loaded cap	Cord Grip with Mesh
FDP6	31-6A426	DS6PC	DS6MC	31-6A226	see pgs 193-194

Accessory Spotlight

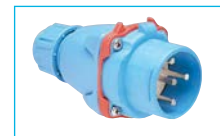
Finger Drawplates



Finger drawplates are recommended for easier connector closure on cord to cord assemblies.

Order Example

A typical order should include an inlet part number, a receptacle part number **AND** the matching handles, angles or other required accessories.



Male Inlet with Handle (Plug)
33-68043 + FH611



Female Receptacle with Angle Adapter
33-64043 + MP6

DS100C



DECONTACTOR™ – 100A

Switch Rated Plugs & Receptacles

Ratings

- Voltage**
600 VAC
- Switch Ratings (AC Only)**
Branch Circuit & Motor Circuit
Disconnect Switching
- Horsepower Ratings**

120V	1Ø	2 hp
240V	1Ø	3 hp
208V	3Ø	7 1/2 hp
240V	3Ø	7 1/2 hp
480V	3Ø	20 hp
600V	3Ø	25 hp
- Short Circuit Rating**
100kA Close & Withstand
Testing was performed with RK1 current limiting fuses sized at 400% of the highest full load motor ampacity associated with the device's hp rating.
- Environmental Ratings**
Type 3R, IP54/IP55*
* IP54 when the plug & receptacle are mated. IP55 on the receptacle alone when the lid is latched closed.
- Temperature Range**
Min -40°F/Max 140°F
See pg 220 for temps below -15°F.
- Wiring Capacity**
Min 10 AWG Max 2 AWG
Aux Contacts - Max 14 AWG
- Listings**
UL, CSA, IEC, CE*
* Contact Customer Service

Receptacle (female)



Voltage	Polarity	Part #	
		Poly	Metal
120/208V	3P+N+G	33-64237-C-K16	37-64237-C-K16
125V	1P+N+G	33-64175-C-K07	37-64175-C-K07
125/250V	2P+N+G	33-64176-C-K07	37-64176-C-K07
208V	2P+G	33-64232-C-K16	37-64232-C-K16
208V	3P+G	33-64233-C-K16	37-64233-C-K16
250V	2P+G	33-64172-C-K07	37-64172-C-K07
250V	3P+G	33-64173-C-K07	37-64173-C-K07
277V	1P+N+G	33-64245-C-K04	37-64245-C-K04
277/480V	3P+N+G	33-64247-C-K04	37-64247-C-K04
347/600V	3P+N+G	33-64187-C-K14	37-64187-C-K14
480V	2P+G	33-64242-C-K04	37-64242-C-K04
480V	3P+G	33-64243-C-K04	37-64243-C-K04
600V	2P+G	33-64182-C-K14	37-64182-C-K14
600V	3P+G	33-64183-C-K14	37-64183-C-K14

Other voltage configurations are available – contact customer service at 800.433.7642.

Inlet (male)



Voltage	Polarity	Part #	
		Poly	Metal
120/208V	3P+N+G	33-68237-C-K16	37-68237-C-K16
125V	1P+N+G	33-68175-C-K07	37-68175-C-K07
125/250V	2P+N+G	33-68176-C-K07	37-68176-C-K07
208V	2P+G	33-68232-C-K16	37-68232-C-K16
208V	3P+G	33-68233-C-K16	37-68233-C-K16
250V	2P+G	33-68172-C-K07	37-68172-C-K07
250V	3P+G	33-68173-C-K07	37-68173-C-K07
277V	1P+N+G	33-68245-C-K04	37-68245-C-K04
277/480V	3P+N+G	33-68247-C-K04	37-68247-C-K04
347/600V	3P+N+G	33-68187-C-K14	37-68187-C-K14
480V	2P+G	33-68242-C-K04	37-68242-C-K04
480V	3P+G	33-68243-C-K04	37-68243-C-K04
600V	2P+G	33-68182-C-K14	37-68182-C-K14
600V	3P+G	33-68183-C-K14	37-68183-C-K14

Main Options



Auxiliary/Pilot Contacts



Mushroom Pawl



Padlock Pawl



Closed Lid Configuration

Recommended for cord applications to keep lid tucked in to avoid damage.



See pgs 197-206 for detailed information on these options

Receptacle Options

Suffix

With 2 Auxiliary/Pilot Contacts	Recept # - 972
With 3 Auxiliary/Pilot Contacts	Recept # - 263*
Type 4X & closed lid configuration	Recept # - 4X
Straight Insertion	Recept # - 352
Self-Ejecting Connector Release	Recept # - 354
Mushroom Pawl	Recept # - 375
Padlock Pawl	Recept # - 843
Padlockable Mushroom Pawl	Recept # - 375-843
Locking Mushroom Pawl	Recept # - 845
Metal Pawl (on poly receptacle)	Recept # - 824
Closed Lid Configuration	Recept # - NC
With Auxiliary Switch	Recept # - 270**
Recess Plate	Recept # - 142

Notes: + Not available for metal devices, not UL/CSA listed
++ Not UL/CSA listed

Inlet Options

Suffix

With 2 Auxiliary/Pilot Contacts	Inlet # - 972
With 3 Auxiliary/Pilot Contacts	Inlet # - 263*
Type 4X Watertightness	Inlet # - 4X
Self-Ejecting Plug Release	Inlet # - 338
With No Lockout Hole	Inlet # - A155
For Auxiliary Switch*	Inlet # - NNF

Notes: * Order inlet with P+N+G configuration and receptacle with P+G configuration

DS100C Order Example:

To order 2 auxiliary/pilot contacts on an inlet and receptacle add **-972** to the part numbers.

DS100C Poly inlet 3P+G=33-68243-C-K04-**972**

DS100C Poly receptacle 3P+G=33-64243-C-K04-**972**

Appropriate accessory part numbers must also be included on the order.

Installation Accessories

Unless indicated otherwise, accessories can be used with either poly or metal plugs and receptacles

Handles



Not Type 3R

Makes connector closures easier

NPT	Poly Handle	Metal* Handle	Cable Range	Nylon Handle	Neoprene Handle	Poly Handle w/Clamp & Bushing	Poly Handle w/built in Draw Grips
1/2"	6PH12	6H12	.50 - 1.25	-	31-611	-	-
3/4"	6PH34	6H34	.51 - 1.38	FH611	-	-	FH611-473
1"	6PH1	6H1	1.250 - 1.375	-	-	6PM622	-
1 1/4"	6PH114	6H114	1.438 - 1.562	-	-	6PM625	-
1 1/2"	6PH112	6H112	1.562 - 1.688	-	-	6PM627	-
			1.688 - 1.812	-	-	6PM629	-

Notes:

- Finger draw plates are recommended for easier connector closure on cord to cord assemblies.
- For available cord grips, see pgs 193-194.
- * For metal devices only

- For a guideline of NPT sizes based on cable ranges, see DS30 on pg 40.

Angles



Nylon 30° Angle	Metal 30° Angle	Metal 70° Angle	Metal Angle+ Oversized 30°	Metal Straight Adapter	Metal Lateral Angle 30°
MP6	MA6	89-6A027	MA660	MS6	MAB6

* Mounts on oversize box only. Order with MB10 box. See page 46.

Junction Boxes



NPT	Metal Box	Metal Box with Nylon Angle	Metal Box with Metal Angle	Poly* Conduit Entry	Poly 70°** Wall Box
1/2"	-	-	-	MC612	51-DA058
3/4"	-	-	-	MC634	51-DA058
1"	MB61	31-6A053-080-1	39-6A053-080-1	MC61	51-DA058
1 1/4"	MB6114	31-6A053-080-114	39-6A053-080-114	MC6114	51-DA058
1 1/2"	MB6112	31-6A053-080-112	39-6A053-080-112	-	51-DA058
2"	MB62	31-6A053-080-2	39-6A053-080-2	-	51-DA058

* For poly devices only

** 70° boxes are not drilled. Contact customer service if factory drilling is required.

* Interior volume with receptacle installed.

Miscellaneous Accessories



Set of Two (2)

For Male Devices Only

For Male Devices Only

Inlet Spring-Loaded cap

Cord Grip with Mesh

Mount to existing boxes

Finger Drawplates	Protective Cap	Padlockable Cap	Inlet Spring-Loaded cap	Cord Grip with Mesh	Easy Retrofit Adapter Plates
FDP6	31-6A426	DS6MC	31-6A226	see pgs 193-194	see pg 189

Option Spotlight

Closed Lid Configuration



Normally closed lid configuration is recommended for cord to cord applications to keep the lid tucked in and avoid damage.

Order Example

A typical order should include an inlet part number, a receptacle part number **AND** the matching handles, angles or other required accessories.



Male Inlet with Handle (Plug)
33-68243-C-K04 + FH611



Female Receptacle with Angle Adapter
33-64243-C-K04 + MP6

DS100



DECONTACTOR™ – 100A

Switch Rated Plugs & Receptacles

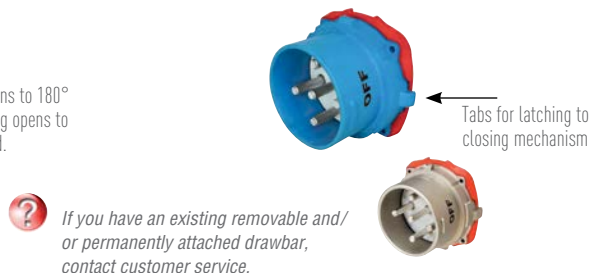
Ratings

- Voltage**
600 VAC
- Switch Rating (AC Only)**
Branch Circuit
Disconnect Switching
- Short Circuit Rating**
65kA Close & Withstand
Testing was performed with RK5
time delay fuses sized at 100%
of the devices rated ampacity.
- Environmental Ratings**
Type 4X, IP66+IP67 (Poly Only)
Type 3R, IP54/IP55* (Metal Only)
* IP54 when the plug & receptacle are
mated. IP55 on the receptacle alone
when the lid is latched closed.
- Temperature Range**
Min -40°F/Max 140°F
See pg 220 for temps below -15°F.
- Wiring Capacity**
Min 4 AWG Max 2/0 AWG
Aux Contacts - Max 14 AWG
- Listings**
UL, CSA, IEC, CE*
* Contact Customer Service

Receptacle (female)



Inlet (male)



Voltage	Polarity	Part # Poly	Metal
120/208V	3P+N+G*	33-94167	37-94167
125V	1P+N+G	33-94075	37-94075
125/250V	2P+N+G	33-94076	37-94076
208V	2P+G	33-94162	37-94162
208V	3P+G	33-94163	37-94163
250V	2P+G	33-94072	37-94072
250V	3P+G	33-94073	37-94073
277V	1P+N+G	33-94045	37-94045
277/480V	3P+N+G*	33-94047	37-94047
347/600V	3P+N+G*	33-94147	37-94147
480V	2P+G	33-94042	37-94042
480V	3P+G	33-94043	37-94043
600V	2P+G	33-94142	37-94142
600V	3P+G	33-94143	37-94143

Voltage	Polarity	Part # Poly	Metal
120/208V	3P+N+G*	33-98167	37-98167
125V	1P+N+G	33-98075	37-98075
125/250V	2P+N+G	33-98076	37-98076
208V	2P+G	33-98162	37-98162
208V	3P+G	33-98163	37-98163
250V	2P+G	33-98072	37-98072
250V	3P+G	33-98073	37-98073
277V	1P+N+G	33-98045	37-98045
277/480V	3P+N+G*	33-98047	37-98047
347/600V	3P+N+G*	33-98147	37-98147
480V	2P+G	33-98042	37-98042
480V	3P+G	33-98043	37-98043
600V	2P+G	33-98142	37-98142
600V	3P+G	33-98143	37-98143

Other voltage configurations are available – contact customer service at 800.433.7642.

Main Options



**Auxiliary/Pilot
Contacts**



**Mushroom
Pawl**



**Padlock
Pawl**



**Closed Lid
Configuration**
Recommended for cord
applications to keep lid
tucked in to avoid damage.

Receptacle Options

Suffix

With 2 Auxiliary/Pilot Contacts	Recept # - 262
With 3 Auxiliary/Pilot Contacts	Recept # - 263
With 4 Auxiliary/Pilot Contacts	Recept # - 264
With 5 Auxiliary/Pilot Contacts	Recept # - 975
With 6 Auxiliary/Pilot Contacts	Recept # - 976
Type 4X & closed lid configuration	Recept # - 4X ⁱ
Straight Insertion	Recept # - 352
Self-Ejecting Connector Release	Recept # - 354
Mushroom Pawl	Recept # - 375
Padlock Pawl	Recept # - 843
Padlockable Mushroom Pawl	Recept # - 375-843
Locking Mushroom Pawl	Recept # - 845
Metal Pawl (on poly receptacle)	Recept # - 824
180° Opening Lid	Recept # - 180 ⁺⁺
Closed Lid Configuration	Recept # - NC
With Auxiliary Switch	Recept # - 270 ⁺⁺⁺

Notes: ++ Required when mating to rigid mounted male inlet

+++ Not UL/CSA listed

ⁱ Metal devices only

Inlet Options

Suffix

With 2 Auxiliary/Pilot Contacts	Inlet # - 262
With 3 Auxiliary/Pilot Contacts	Inlet # - 263
With 4 Auxiliary/Pilot Contacts	Inlet # - 264
With 5 Auxiliary/Pilot Contacts	Inlet # - 975
With 6 Auxiliary/Pilot Contacts	Inlet # - 976
Type 4X Watertightness	Inlet # - 4X ⁱ
Self-Ejecting Plug Release	Inlet # - 338
With No Lockout Hole	Inlet # - A155
For Auxiliary Switch*	Inlet # - NNF

Notes: * Order inlet with P+N+G configuration and receptacle with P+G configuration

DS100 Order Example:

To order 2 auxiliary/pilot contacts on an inlet and receptacle add **-262** to the part numbers.

DS100 Poly inlet 3P+G=33-98043-**262**

DS100 Poly receptacle 3P+G=33-94043-**262**

Appropriate accessory part numbers must also be included on the order.

Installation Accessories

Unless indicated otherwise, accessories can be used with either poly or metal plugs and receptacles

Handles



IP 66/67

NPT	Poly Handle	Metal* Handle
3/4"	9PH34	9H34
1"	9PH1	9H1
1 1/4"	9PH114	9H114
1 1/2"	9PH112	9H112
2"	9PH2	9H2

Cable Range	Santoprene™ Handle	Poly Handle w/Clamp & Bushing
.70 - 1.00	65-9A013-D25	–
.984 - 1.377	65-9A013-D35	–
1.250 - 1.375	–	9PM622
1.377 - 1.771	65-9A013-D45	–
1.438 - 1.562	–	9PM625
1.562 - 1.688	–	9PM627
1.688 - 1.812	–	9PM629

- Notes:**
- Finger draw plates are recommended for easier connector closure on cord to cord assemblies.
 - For available cord grips, see pgs 193-194.
 - * For metal devices only
 - For a guideline of NPT sizes based on cable ranges, see DS30 on pg 40.

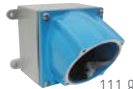
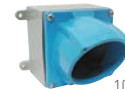
Angles



Nylon 30° Angle	Metal 30° Angle	Metal 70° Angle	Metal Angle+ Oversized 30°	Metal Straight Adapter
MP10	MA10	89-9A027	MA110	MS10

* Mounts on oversize box only. Order with MB220 box. See page 48.

Junction Boxes



108.7 in³*

111.8 in³*

NPT	Metal Box	Metal Box with Nylon Angle	Metal Box with Metal Angle
1 1/4"	MB10114	31-9A053-080-114	39-9A053-080-114
1 1/2"	MB10112	31-9A053-080-112	39-9A053-080-112
2"	MB102	31-9A053-080-2	39-9A053-080-2
2 1/2"	MB10212	31-9A053-080-212	39-9A053-080-212

* Interior volume with receptacle installed.

Miscellaneous Accessories



For Male Devices Only



For Male Devices Only



Cord Grip with Mesh



Mount to existing boxes

Protective Cap	Padlockable Cap Aluminum	Cord Grip with Mesh	Easy Retrofit Adapter Plates
31-9A126	DS9MC	see pgs 193-194	see pg 189

Order Example

A typical order should include an inlet part number, a receptacle part number **AND** the matching handles, angles or other required accessories.



Male Inlet with Handle (Plug)
37-98043 + 65-9A013-D25



Female Receptacle with Angle Adapter
37-94043 + MA10

Feature Spotlight – Easy Closing Mechanism

A new and simplified closing mechanism is now standard on the DS100 and DS200 plugs and receptacles. This compact mechanism enables easy connection of the plug to the receptacle.

Notes: After connection, the mechanism must be released to allow disconnection of the device.



The plug is partially inserted, clamps are placed around tab, ready to pull the plug into the receptacle



The handles are pushed down, the plug is fully drawn into the receptacle

DS200



DECONTACTOR™ – 200A

Switch Rated Plugs & Receptacles

Ratings

- Voltage**
480 VAC
- Switch Rating (AC Only)**
Branch Circuit
Disconnect Switching
- Short Circuit Rating**
65kA Close & Withstand
Testing was performed with RK5 time delay fuses sized at 100% of the devices rated ampacity.
- Environmental Ratings**
Type 3R, IP54/IP55*
* IP54 when the plug & receptacle are mated. IP55 on the receptacle alone when the lid is latched closed.
- Temperature Range**
Min -40°F/Max 140°F
See pg 220 for temps below -15°F.
- Wiring Capacity**
Min 4 AWG Max 3/0 AWG
Aux Contacts - Max 14 AWG
* 4/0 is available upon request by adding suffix "A06" to the inlet or receptacle.
- Listings**
UL, CSA, IEC, CE*

* Contact Customer Service

Receptacle (female)



Voltage	Polarity	Part # Metal
120/208V	3P+N+G	37-24167
125V	1P+N+G	37-24075
125/250V	2P+N+G	37-24076
208V	2P+G	37-24162
208V	3P+G	37-24163
250V	2P+G	37-24072
250V	3P+G	37-24073
277V	1P+N+G	37-24045
277/480V	3P+N+G	37-24047
347/600V	3P+N+G	*
480V	2P+G	37-24042
480V	3P+G	37-24043
600V	2P+G	*
600V	3P+G	*

* See DR250 for 600V device page 151

Inlet (male)



Voltage	Polarity	Part # Metal
120/208V	3P+N+G	37-28167
125V	1P+N+G	37-28075
125/250V	2P+N+G	37-28076
208V	2P+G	37-28162
208V	3P+G	37-28163
250V	2P+G	37-28072
250V	3P+G	37-28073
277V	1P+N+G	37-28045
277/480V	3P+N+G	37-28047
347/600V	3P+N+G	*
480V	2P+G	37-28042
480V	3P+G	37-28043
600V	2P+G	*
600V	3P+G	*

Main Options



Auxiliary/Pilot Contacts



Mushroom Pawl



Padlock Pawl



Closed Lid Configuration
Recommended for cord applications to keep lid tucked in to avoid damage.



See pgs 197-206 for detailed information on these options

Receptacle Options

Suffix

With 2 Auxiliary/Pilot Contacts	Recept # - 172
With 3 Auxiliary/Pilot Contacts	Recept # - 173+
With 4 Auxiliary/Pilot Contacts	Recept # - 174+
With 5 Auxiliary/Pilot Contacts	Recept # - 175+
Type 4X & closed lid configuration	Recept # - 4X
Straight Insertion	Recept # - A188
Self-Ejecting Connector Release	Recept # - 348-A188
Mushroom Pawl	Recept # - 375
Padlock Pawl	Recept # - 843
Padlockable Mushroom Pawl	Recept # - 375-843
Locking Mushroom Pawl	Recept # - 845
180° Opening Lid	Recept # - 180++
Closed Lid Configuration	Recept # - NC
With Auxiliary Switch	Recept # - 270+++

Notes: ++ DS200 devices with 3 or more aux/pilot contacts are not UL/CSA listed

++ Required when mating to rigid mounted male inlet

+++ Not UL/CSA listed

Inlet Options

Suffix

With 2 Auxiliary/Pilot Contacts	Inlet # - 172
With 3 Auxiliary/Pilot Contacts	Inlet # - 173+
With 4 Auxiliary/Pilot Contacts	Inlet # - 174+
With 5 Auxiliary/Pilot Contacts	Inlet # - 175+
Type 4X Watertightness	Inlet # - 4X
Self-Ejecting Plug Release	Inlet # - 338-A188
Straight Insertion	Inlet # - A188
With No Lockout Hole	Inlet # - A155
For Auxiliary Switch*	Inlet # - NNF

Notes: * Order inlet with P+N+G configuration and receptacle with P+G configuration

DS200 Order Example:

To order 2 auxiliary contacts on an inlet and receptacle add **-172** to the part numbers.

DS200 Metal inlet 3P+G=37-28043-**172**

DS200 Metal receptacle 3P+G=37-24043-**172**

Appropriate accessory part numbers must also be included on the order.

Installation Accessories

Handles



IP 66/67

NPT	Poly Handle	Metal* Handle
1"	-	2H1
1 1/4"	-	2H114
1 1/2"	2PH112	2H112
2"	2PH2	2H2
2 1/2"	2PH212	2H212
3"	-	2H3

Cable Range	Santoprene™ Handle
.984 - 1.377	35-2A013-D35
1.377 - 1.771	35-2A013-D45
1.771 - 1.929	35-2A013-D49

NPT Guidelines

Cable Range	NPT
.312 - .625	1/2"
.438 - .812	3/4"
.660 - 1.000	1"
.875 - 1.375	1 1/4"
.890 - 1.812	1 1/2"
1.190 - 2.438	2"
2.062 - 2.438	2 1/2"
2.438 - 2.812	3"

NPT sizes are determined by the cable diameter and third party cord grip.

Notes: • For available cord grips, see pgs 193-194.

Angles



Metal 60° Angle	Metal Angle+ Oversized 45°	Metal Straight Adapter
MA20	MA220	MS20

* Mounts on oversize box only.

Junction Boxes



NPT	Metal Box	Metal Box Oversized	Metal Box with Metal Angle
1 1/2"	MB20112	-	39-2A053-080-112
2"	MB202	-	39-2A053-080-2
2 1/2"	MB20212	MB22212	39-2A053-080-212

* Interior volume with receptacle installed.

Miscellaneous Accessories



For Male Devices Only



For Male Devices Only



Mount to existing boxes

Protective Cap	Padlockable Cap Aluminum	Easy Retrofit Adapter Plates
31-2A126	DS2MC	see pg 189

Feature Spotlight – Easy Closing Mechanism

A new and simplified closing mechanism is now standard on the DS100 and DS200 plugs and receptacles. This compact mechanism enables easy connection of the plug to the receptacle.

Notes: After connection, the mechanism must be released to allow disconnection of the device.



The plug is partially inserted, clamps are placed around tab, ready to pull the plug into the receptacle.



The handles are pushed down, the plug is fully drawn into the receptacle.

Order Example

A typical order should include an inlet part number, a receptacle part number **AND** the matching handles, angles or other required accessories.



Male Inlet with Handle (Plug)
37-28043 + 35-2A013-D35



Female Receptacle with Angle Adapter
37-24043 + MA20