

DSDC

Features and Ratings

p. 168

DSDC

p. 169



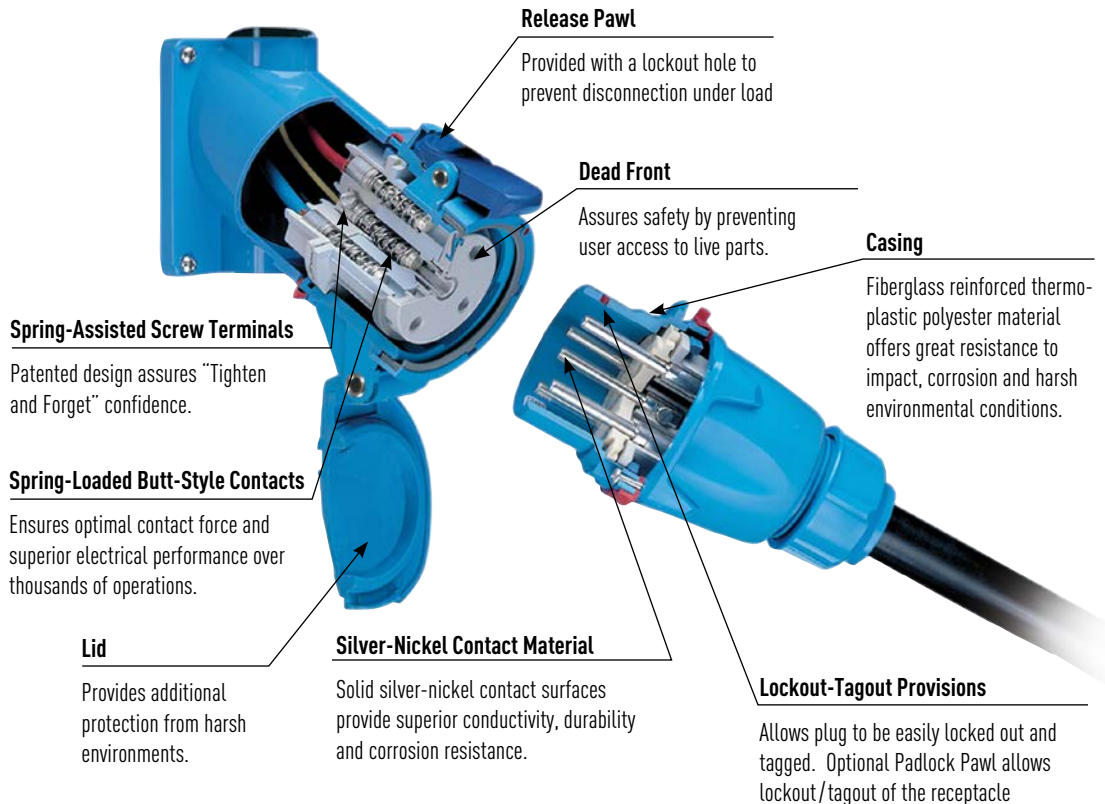
DC rated plugs and receptacles

DSDC Series plugs and receptacles provide safe and robust connections for direct current applications up to 750VDC. The DSDC's spring-loaded, silver-nickel butt contacts and dead front construction provide more consistent and reliable connections and significant improvements in operator safety. DSDC plugs and receptacles are not for current interrupting. Standard locking features should be used to prevent accidental connection or disconnection under load.

Main Advantages

- ▶ Rated for Direct Currents
- ▶ Standard locking feature enables locking in the connected and disconnected mode
- ▶ Robust poly or metal construction

Product Features



General Ratings

Voltage	130 VDC, 250 VDC, 600VDC or 750VDC
Amperage	130 VDC: 20 to 200A 250 VDC: 20 to 200A 600 VDC: 15 to 100A 750 VDC: 10 to 30A
Environmental	Type 3R, IP54/IP55*, Type 4X optional
Temperature	min -40°F/max 140°F

* IP54 rated when receptacle and plug are mated, when not mated receptacle alone is IP55 rated provided that the lid is latched closed.

Listings

Category	UL	CSA
Plugs and Receptacles	UL 1682	C22.2 No. 182.1

CE ratings available upon request

Highlighted Feature

Receptacle Lockout Hole



All DSDC models are provided with a lockout hole in the pawl. This feature allows locking of the receptacle to prevent accidental disconnection of the plug under load.

Operating Instructions



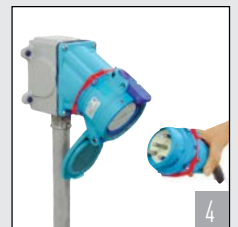
When a DSDC is under load the receptacle should be locked to prevent disconnection.



If the DSDC is NOT under load, it can be disconnected by pressing the pawl.



A quarter turn of the plug allows it to be totally withdrawn from the receptacle. This is done in complete safety as the circuit is already dead.



The plug and the receptacle are separated. The safety shutter prevents access to live parts.

5 To reconnect, insert plug into receptacle, twist slightly, and apply insertion force.

DSDC

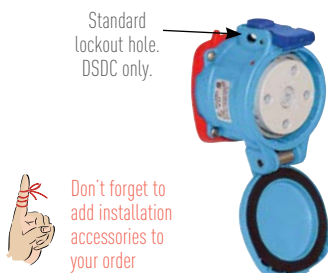
DSDC – 130V, 250V, 600V, 750V

Standard Duty Plugs & Receptacles

Ratings

- **Voltage**
110-130, 250, 600 or 750 VDC
- **Current Interruption Capability**
Not for current interrupting
- **Environmental Ratings**
Type 3R, IP54/IP55*
* IP54 when the plug & receptacle are mated. IP55 on the receptacle alone when the lid is latched closed.
- **Temperature Range**
Min -40°F/Max 140°F
See pg 220 for temps below -15°F.
- **Wiring Capacity**
DSDC1 Min 14 AWG Max 8 AWG
DSDC3 Min 14 AWG Max 6 AWG
DSDC6 Min 10 AWG Max 2 AWG
DSDC9 Min 4 AWG Max 2/0 AWG
DSDC2 Min 4 AWG Max 2/0-AWG
+ 4/0 available by adding suffix "-A06" to the inlet and receptacle.
- **Listings**
UL 1682 (130, 250 & 600 VDC)
CSA listed up to 250 VDC
750 VDC devices pass UL testing, but are outside the scope of the standard so they cannot be listed.

Receptacle (female)



Inlet (male)

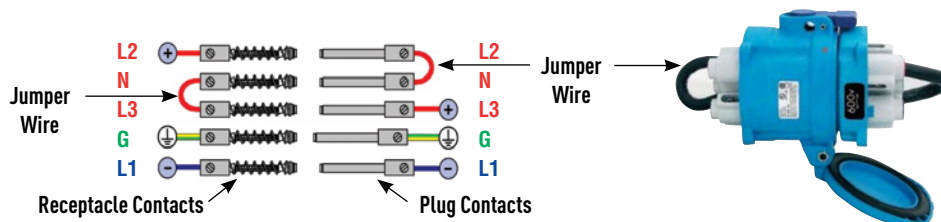


	Voltage/Amps Polarity			Part #	
				Poly	Metal
DSDC1	130V/20A	2P+G	33-14109	-	-
DSDC3	130V/30A	2P+G	33-34109	-	-
DSDC6	130V/60A	2P+G	33-64109	37-64109	37-64109
DSDC9	130V/100A	2P+G	33-94109	37-94109	37-94109
DSDC2	130V/200A	2P+G	-	37-24109	37-24109
DSDC1	250V/20A	2P+G	33-14209	-	-
DSDC3	250V/30A	2P+G	33-34209	-	-
DSDC6	250V/60A	2P+G	33-64209	37-64209	37-64209
DSDC9	250V/100A	2P+G	33-94209	37-94209	37-94209
DSDC2	250V/200A	2P+G	-	37-24209	37-24209
DSDC1	600V/15A	2P+G*	33-14058-S82	-	-
DSDC3	600V/30A	2P+G*	33-34058-S82	-	-
DSDC6	600V/50A	2P+G*	33-64058-S82	37-64058-S82	37-64058-S82
DSDC9	600V/60A	2P+G*	33-94058-S82	-	-
DSDC2	600V/100A	2P+G*	-	37-24058-S82	37-24058-S82
DSDC1	750V/10A	2P+G*	33-14158-S69	-	-
DSDC3	750V/20A	2P+G*	33-34158-S69	-	-
DSDC6	750V/30A	2P+G*	33-64158-S69	37-64158-S69	37-64158-S69

Notes: * Polarity for connection purposes. Devices have additional contacts used for load splitting. See information below.

Jumpers provided on 600 VDC and 750 VDC models

Jumpers are required on all 600 VDC and 750 VDC models as a safety precaution to split the arc in case of accidental disconnection under load. Plugs and receptacles are provided with jumpers installed. Receptacles utilize a jumper between N and L3 poles. Plugs utilize a jumper between L2 and N poles.



Receptacle Options Part

Type 4X Watertightness	Recept # - 4X
Metal Pawl (on poly receptacle)	Recept # - 824

Closed Lid Configuration	Recept # - NC
--------------------------	---------------

DSDC2 models are also provided with a screw locking pawl to provide an alternative means of preventing accidental disconnection under load.

Inlet Options Part

Type 4X Watertightness	Inlet # - 4X
With No Lockout Hole	Inlet # - A155

Installation Accessories

Handles



Nylon Handle



Poly Handle



Poly Handle

DSDC1, 3, 6 shown

DSDC9, 2 shown

	Cable Range	Nylon Handle	1/2" NPT	3/4" NPT	1" NPT	1 1/4" NPT	1 1/2" NPT	2" NPT	2 1/2" NPT
DSDC1	.20 - .83	FH111	1PH12	1PH34	1PH1	1PH114	-	-	-
DSDC3	.39 - 1.18	FH311	3PH12	3PH34	3PH1	3PH114	-	-	-
DSDC6	.51 - 1.38	FH611	6PH12	6PH34	6PH1	6PH114	6PH112	-	-
DSDC9	-	-	-	9PH34	9PH1	9PH114	9PH112	9PH2	-
DSDC2	-	-	-	-	2PH1	2PH114	2PH112	2PH2	2PH212

Notes:

- Finger draw plates are recommended for easier connector closure on cord to cord assemblies.
- For available cord grips, see pgs 193-194.

Angles



	Nylon 30° Angle	Metal 30° Angle	Metal Angle FS/FD Box 30°	Metal Straight Adapter	Poly 70°** Wall Box
DSDC1	MP2	MA2	MAFS2*	MS2	51-BA058
DSDC3	MP3	MA3	MAFS3*	MS3	51-CA058
DSDC6	MP6	MA6	-	MS6	51-DA058
DSDC9	MP10	MA10	-	MS10	-
DSDC2	-	MA20	-	MS20	-

* MAFS2 and MAFS3 base measures approximately 4.2" x 2.7". Due to the variation in sizes of FS boxes, please verify that your FS box matches our dimensions, if not call Customer Service for other solutions.

** 70° boxes are not drilled. Contact customer service if factory drilling is required.

Miscellaneous Accessories



* Set of Two (2)



For Male Devices Only



For Male Devices Only



Finger Drawplates	Protective Cap	Padlockable Cap Poly	Inlet Spring-loaded Cap
FDP2	31-1A126	DS1PC	31-1A226
FDP3	31-3A126	DS3PC	31-3A226
FDP6	31-6A126	DS6PC	31-6A226
**	31-9A126	DS9MC***	-
**	31-2A126	DS2MC***	-

* Recommended for cord to cord assembly applications, for easier connector closure

** An easy closing mechanism is standard on DSDC9 and DSDC2

*** Padlockable Cap Aluminum - Not pictured

Junction Boxes



Metal Box

DSDC1, 3, 6 shown



Metal Box

DSDC9, 2 shown

	1/2" NPT	3/4" NPT	1" NPT	1 1/4" NPT	1 1/2" NPT	2" NPT	2 1/2" NPT
DSDC1	MB312	MB334	MB31	MB3114	-	-	-
DSDC3	MB312	MB334	MB31	MB3114	-	-	-
DSDC6	-	-	MB61	MB6114	MB6112	MB62	-
DSDC9	-	-	-	MB10114	MB10112	MB102	MB10212
DSDC2	-	-	-	-	MB20112	MB202	MB20212



Poly Conduit Box For poly devices only

	1/2" NPT	3/4" NPT	1" NPT	1 1/4" NPT
DSDC1	MC212	MC234	-	-
DSDC3	MC312	MC334	MC31	-
DSDC6	MC612	MC634	MC61	MC6114

For DSDC dimensions use the cross reference chart below and refer to DS dimensions on pgs 51-52.

Dimensions	
DSDC1	same as DS20
DSDC3	same as DS30
DSDC6	same as DS60
DSDC9	same as DS100
DSDC2	same as DS200