

Type CBG 30mm Pilot devices

ABB Pilot devices CBG 30mm



Description

Ratings

- Worldwide availability
- UL Listed for Types 1, 3R, 4, 4X, 12 & 13 applications
- UL, CSA, NEMA, IEC and most international standards
- CE marking
- UL File # E57057
- CSA File # LR19700

General construction

- Quick mounting feature reduces installation time
- Front ring options are chrome metal and black plastic
- Contact block holder features rear mounting with quick-release locking mechanism for high security
- Knurled sleeve tightens against panel assuring secure mounting
- Buttons available in seven colors
- Engraved caps available
- Mounts in 30mm hole
- Anti-rotation

Operators

- Mushroom operators in maintained, push-pull, illuminated, twist release, momentary or key operated designs
- Illuminated & non-illuminated push-push operators with push-on & push-off designs (maintained)
- Two-position toggle operators, maintained
- Three-position toggle operators, maintained or momentary
- Key operated pushbuttons
- Potentiometers
- Selector switches, 2 or 3 position, illuminated, maintained, momentary or key operated
- Available with or without contact blocks

Pilot devices

- Full voltage, resistor and transformer type
- LED bulbs available for illuminated pushbuttons and pilot lights

Contact blocks

- CBK 22mm and CBG 30mm devices use the same contact blocks, lamp modules and transformers, lenses and buttons
- Quick-mount, quick-release contact block holder for fast, easy assembly
- N.O. & N.C. contact blocks are color coded for easy identification: Green, N.O./Red, N.C.
- Silver tipped contacts have wiping action for high reliability
- Low energy gold plated contact blocks available
- Base mounted contact blocks are available and snap onto a 35mm DIN rail
- 5 Contact block holder

Enclosures

- Available in 1, 2, 3, 4 & 6 operators. Consult factory for more information.

Spec Tech Industrial 203 Vest Ave. Valley Park, MO 63088 Phone: 888 SPECTECH
Fax: 636 537-1405 www.spectechind.com

Non-illuminated Flush & extended pushbuttons Momentary



CBG-MPR



CBG-MPER



CBK-CB10



5 contact block holder

Non-Illuminated, momentary

Type	Black plastic ring		Chrome metal ring	
	Catalog number	List price	Catalog number	List price
Flush button				
Red	CBG-KPR	\$ 17.00	CBG-MPR	\$ 17.00
Green	CBG-KPG		CBG-MPG	
Yellow	CBG-KPY		CBG-MPY	
Blue	CBG-KPL		CBG-MPL	
Black	CBG-KPB		CBG-MPB	
Clear ^①	CBG-KPC		CBG-MPC	
White	CBG-KPW		CBG-MPW	
Extended button				
Red	CBG-KPER	17.00	CBG-MPER	17.00
Green	CBG-KPEG		CBG-MPEG	
Yellow	CBG-KPEY		CBG-MPEY	
Blue	CBG-KPEL		CBG-MPEL	
Black	CBG-KPEB		CBG-MPEB	
Clear ^①	CBG-KPEC		CBG-MPEC	
White	CBG-KPEW		CBG-MPEW	

Contact blocks (Maximum 6 per operator)

Item	Separate contact blocks catalog number	Included with operator suffix code	List price adder
1 N.O. 1 N.C.	CBK-CB10 CBK-CB01	10 01	\$ 8.00
1 N.O. & 1 N.C. 2 N.O. 2 N.C.	CBK-CB10 + CBK-CB01 CBK-CB10 + CBK-CB10 CBK-CB01 + CBK-CB01	11 20 02	16.00

Pushbuttons are complete except for contact blocks:

- To order a pushbutton operator complete with contact block, add the appropriate suffix code to the end of the catalog number and add the list price adder to the operator list price. EX: CBG-KPR10, **\$ 25.00**
- To order just the contact block, refer to "Separate Contact Blocks" column and indicate catalog number and quantity. EX: CBK-CB10, qty 1, **\$ 8.00**

Example of individual component ordering

$$\text{CBG-KPR} \quad + \quad \text{CBK-CB10} \quad = \quad \text{CBG-KPR10}$$

$$\text{\$ 17.00} \quad + \quad \text{\$ 8.00} \quad = \quad \text{\$ 25.00}$$

5 Contact block holders (Maximum 6 contact blocks)

To order an assembled unit with a 5 contact block holder, add the digit "5" to the end of the catalog number and add \$ 4.00 to the list price. EX: CBG-KPR5, **\$ 21.00**

To order double contact blocks used with the 5 block holder, order the following combinations separately:

Item	Catalog number	Price
2 NO	KCB-20	\$ 16.00
2 NC	KCB-02	
1 NO & 1 NC	KCB-11	

^① To order a lens insert, refer to the lens inserts selection chart on pages 8.43 - 8.44 and place the appropriate suffix code at the end of the catalog number (but before the contact block suffix code, if there is one) and add \$.90 to the list price.

Non-illuminated Flush & extended pushbuttons Maintained

Pilot Devices
Type CBG 30mm



CBG-MPPR



CBG-MPPER



CBK-CB10



5 contact block holder

Non-Illuminated, maintained (push-push)

Type	Black plastic ring		Chrome metal ring	
	Catalog number	List price	Catalog number	List price
Flush button				
Red	CBG-KPPR	\$ 34.20	CBG-MPPR	\$ 34.20
Green	CBG-KPPG		CBG-MPPG	
Yellow	CBG-KPPY		CBG-MPPY	
Blue	CBG-KPPL		CBG-MPPL	
Black	CBG-KPPB		CBG-MPPB	
Clear [®]	CBG-KPPC		CBG-MPPC	
White	CBG-KPPW		CBG-MPPW	
Extended button				
Red	CBG-KPPER	34.20	CBG-MPPER	34.20
Green	CBG-KPPEG		CBG-MPPEG	
Yellow	CBG-KPPEY		CBG-MPPEY	
Blue	CBG-KPEEL		CBG-MPEEL	
Black	CBG-KPEEB		CBG-MPEEB	
Clear [®]	CBG-KPEEC		CBG-MPEEC	
White	CBG-KPEEW		CBG-MPEEW	

Contact blocks (Maximum 6 per operator)

Item	Separate contact blocks catalog number	Included with operator suffix code	List price adder
1 N.O. 1 N.C.	CBK-CB10 CBK-CB01	10 01	\$ 8.00
1 N.O. & 1N.C. 2 N.O. 2 N.C.	CBK-CB10 + CBK-CB01 CBK-CB10 + CBK-CB10 CBK-CB01 + CBK-CB01	11 20 02	16.00

Pushbuttons are complete except for contact blocks:

- To order a pushbutton operator complete with contact block, add the appropriate suffix code to the end of the catalog number and add the list price adder to the operator list price. EX: CBG-KPPR10, **\$ 42.20**
- To order just the contact block, refer to "Separate Contact Blocks" column and indicate catalog number and quantity. EX: CBK-CB10, qty 1, **\$ 8.00**

Example of individual component ordering

$$\text{CBG-KPPR} \quad + \quad \text{CBK-CB10} \quad = \quad \text{CBG-KPPR10}$$

$$\text{\$ 34.20} \quad + \quad \text{\$ 8.00} \quad = \quad \text{\$ 42.20}$$

5 Contact block holders (Maximum 6 contact blocks)

To order an assembled unit with a 5 contact block holder, add the digit "5" to the end of the catalog number and add \$ 4.00 to the list price. EX: CBG-KPPR5, **\$ 38.20**

To order double contact blocks used with the 5 block holder, order the following combinations separately:

Item	Catalog number	Price
2 NO	KCB-20	\$ 16.00
2 NC	KCB-02	
1 NO & 1 NC	KCB-11	

① To order lens insert, refer to the lens inserts selection chart on pages 8.43 - 8.44 and place the appropriate suffix code at the end of the catalog number (but before the contact block suffix code, if there is one) and add \$.90 to the list price.

Non-illuminated Mushroom pushbuttons, 30mm, 40mm & 60mm Standard and lockable

8



Mushroom pushbuttons — standard

Type	Color	Black plastic ring		Chrome metal ring	
		Catalog number	List price	Catalog number	List price
30mm Twist-release	Red	CBG-PMT3R	\$ 49.00	CBG-MPMT3R	\$ 49.00
	Black	CBG-PMT3B		CBG-MPMT3B	
Push-pull	Red	CBG-PMP3R	49.00	CBG-MPMP3R	49.00
	Black	CBG-PMP3B		CBG-MPMP3B	
40mm Momentary	Red	CBG-KPM40R	35.00	CBG-MPM40R	35.00
	Yellow	CBG-KPM40Y		CBG-MPM40Y	
Black	CBG-KPM40B	CBG-MPM40B			
Twist-release	Red	CBG-PMT40R	53.00	CBG-MPMT40R	53.00
	Black	CBG-PMT40B		CBG-MPMT40B	
Push-pull	Red	CBG-PMP40R	53.00	CBG-MPMP40R	53.00
	Black	CBG-PMP40B		CBG-MPMP40B	
60mm Momentary	Red	CBG-KPM6R	39.00	CBG-MPM6R	39.00
	Yellow	CBG-KPM6Y		CBG-MPM6Y	
	Black	CBG-KPM6B		CBG-MPM6B	

Mushroom pushbuttons — lockable plastic mushroom

Type	Color	Black plastic ring		Chrome metal ring	
		Catalog number	List price	Catalog number	List price
40mm Maintained, key release	Red	CBG-KPMK40R	\$ 63.00	CBG-MPMK40R	\$ 63.00
	Black	CBG-KPMK40B		CBG-MPMK40B	

Contact blocks (Maximum 5 per operator)

Item	Separate contact blocks catalog number	Included with operator suffix code	List price adder
1 N.O.	CBK-CB10	10	\$ 8.00
1 N.C.	CBK-CB01	01	
1 N.O. & 1 N.C.	CBK-CB10 + CBK-CB01	11	16.00
2 N.O.	CBK-CB10 + CBK-CB10	20	
2 N.C.	CBK-CB01 + CBK-CB01	02	

Mushroom pushbuttons are complete except for contact blocks:

- To order a mushroom pushbutton operator complete with contact block, add the appropriate suffix code to the end of the catalog number and add the list price adder to the operator list price. EX: CBG-PMT3R10, \$ 57.00
- To order just the contact block, refer to "Separate contact blocks" column and indicate catalog number and quantity. EX: CBK-CB10, qty 1, \$ 8.00

Example of individual component ordering

$$\text{CBG-KPMT3R} + \text{CBK-CB10} = \text{CBG-KPMT3R10}$$

$$\text{\$ 49.00} + \text{\$ 8.00} = \text{\$ 57.00}$$

5 Contact block holders (Maximum 5 contact blocks)

To order an assembled unit with a 5 contact block holder, add the digit "5" to the end of the catalog number and add \$ 4.00 to the list price. EX: CBG-KPMT3R5, \$ 53.00

To order double contact blocks used with the 5 block holder, order the following combinations separately:

Item	Catalog number	Price
2 NO	KCB-20	\$ 16.00
2 NC	KCB-02	
1 NO & 1 NC	KCB-11	

Non-illuminated Emergency stop pushbuttons, 40mm & 60mm ①②③④ Standard

Pilot Devices
Type CBG 30mm



Emergency stop operators

Type	Color	Black plastic ring		Chrome metal ring	
		Catalog number	List price	Catalog number	List price
40mm Twist-release Pull-release	Red	CBG-KEST4R	\$ 44.00	CBG-MEST4R	\$ 46.00
		CBG-KESP4R		CBG-MESP4R	
60mm Twist-release Pull-release	Red	CBG-KEST6R	56.00	CBG-MEST6R	58.00
		CBG-KESP6R		CBG-MESP6R	

Contact block holder

Item	Catalog number	List price adder
Contact block holder	CBK-ESCH	\$ 2.00

Contact blocks (Maximum 4 per operator)

Item	Separate contact blocks catalog number	Included with operator suffix code	List price adder
1 N.O. 1 N.C.	CBK-CB10 CBK-CB01	10 01	\$ 8.00
1 N.O. & 1N.C. 2 N.O. 2 N.C.	CBK-CB10 + CBK-CB01 CBK-CB10 + CBK-CB10 CBK-CB01 + CBK-CB01	11 20 02	16.00

8

Pushbuttons are complete except for contact blocks:

- To order a pushbutton operator complete with contact block, add the appropriate suffix code to the end of the catalog number and add the list price adder to the operator list price. EX: CBK-EST4R01, **\$ 44.00**
- To order just the contact block, refer to "Separate contact blocks" column and indicate catalog number and quantity. EX: CBK-CB01, qty 1, **\$ 8.00**

Example of individual component ordering

$$\text{CBG-KEST4R} \quad \text{CBK-CB01} \quad = \quad \text{CBG-KEST4R01}$$

$$\$ 44.00 \quad + \quad \$ 8.00 \quad = \quad \$ 52.00$$

① All operators on this page comply with EN418 & IEC947-5-5 standards.
 ② Use adapter plate described on page 8.49 when using CBK-EP series enclosures.
 ③ Can not use CBK-H5.
 ④ See page 8.41 for 30mm adaptor ring.

Non-illuminated Key operated pushbuttons



CBG-PKM1

Key operated pushbuttons ①

Type	Black plastic ring		Chrome metal ring	
	Catalog number	List price	Catalog number	List price
Maintained Locks when depressed, can be released with the key only. Key removable in locked and unlocked position. Key code 1 Key code 2 Key code 3	CBG-PKM1		CBG-MPKM1	
	CBG-PKM2		CBG-MPKM2	
	CBG-PKM3		CBG-MPKM3	
Momentary Can be operated without key when unlocked. Key removable in locked and unlocked position. Key-lockable in non-depressed position. Key code 1 Key code 2 Key code 3	CBG-PKS11		CBG-MPKS11	
	CBG-PKS12		CBG-MPKS12	
	CBG-PKS13		CBG-MPKS13	
Key-lockable in depressed position. Key code 1 Key code 2 Key code 3	CBG-PKS21		CBG-MPKS21	
	CBG-PKS22		CBG-MPKS22	
	CBG-PKS23		CBG-MPKS23	
Key-lockable in non-depressed and depressed position. Key code 1 Key code 2 Key code 3	CBG-PKS31	\$ 55.00	CBG-MPKS31	\$ 55.00
	CBG-PKS32		CBG-MPKS32	
	CBG-PKS33		CBG-MPKS33	
Can be operated with the key only. Key removable in locked position(s). Key-lockable in non-depressed position. Key code 1 Key code 2 Key code 3	CBG-PKS41		CBG-MPKS41	
	CBG-PKS42		CBG-MPKS42	
	CBG-PKS43		CBG-MPKS43	
Key-lockable in depressed position. Key code 1 Key code 2 Key code 3	CBG-PKS51		CBG-MPKS51	
	CBG-PKS52		CBG-MPKS52	
	CBG-PKS53		CBG-MPKS53	
Key-lockable in non-depressed and depressed position. Key code 1 Key code 2 Key code 3	CBG-PKS61		CBG-MPKS61	
	CBG-PKS62		CBG-MPKS62	
	CBG-PKS63		CBG-MPKS63	

Contact blocks (Maximum 4 per operator)

Item	Separate contact blocks catalog number	Included with operator suffix code	List price adder
1 N.O. 1 N.C.	CBK-CB10 CBK-CB01	10 01	\$ 8.00
1 N.O. & 1 N.C. 2 N.O. 2 N.C.	CBK-CB10 + CBK-CB01 CBK-CB10 + CBK-CB10 CBK-CB01 + CBK-CB01	11 20 02	16.00

Pushbuttons are complete except for contact blocks:

- To order a pushbutton operator complete with contact block, add the appropriate suffix code to the end of the catalog number and add the list price adder to the operator list price. EX: CBG-PKM110, \$ 63.00
- To order just the contact block, refer to "Separate contact blocks" column and indicate catalog number and quantity. EX: CBK-CB10, qty 1, \$ 8.00

Example of individual component ordering

$$\text{CBG-PKM1} + \text{CBK-CB10} = \text{CBG-PKM110}$$

$$\text{\$ 55.00} + \text{\$ 8.00} = \text{\$ 63.00}$$

5 Contact block holders (Maximum 4 contact blocks)

To order an assembled unit with a 5 contact block holder, add the digit "5" to the end of the catalog number and add \$ 4.00 to the list price. EX: CBG-PKM15, \$ 59.00

To order double contact blocks used with the 5 block holder, order the following combinations separately:

Item	Catalog number	Price
2 NO 2 NC	KCB-20 KCB-02	\$ 16.00
1 NO & 1 NC	KCB-11	

① See page 8.50 for key code details.

CBK-CB10



5 contact block holder

Non-illuminated Toggle switches

Pilot Devices
Type CBG 30mm



Toggle switches

Type	Diagram	Black plastic ring		Chrome metal ring	
		Catalog number	List price	Catalog number	List price
Maintained, 2 position ②		CBG-TM	\$ 31.50	CBG-MTM	\$ 31.50
Maintained, 3 position ①		CBG-TM3	31.50	CBG-MTM3	31.50
Momentary, 3 position ②		CBG-TS	31.50	CBG-MTS	31.50

Toggle switch contacts and contact blocks



2 Position

As viewed from the front, the contacts are in the normal position with the switch handle in the "A" position. In the "C" position, the contact(s) change state.



3 Position Momentary

As viewed from the front, the contact(s) are in the normal position with the switch handle in the "B" position. In the "A" position, the left contact(s) change state. In the "C" position, the right contact(s) change state.



3 Position Maintained

As viewed from the front, the contact(s) are in the normal position with the switch handle in the "B" position. In the "A" position, the left and center contacts change state. In the "C" position, the right and center contacts change state.

Contact blocks (Maximum 6 per operator)

Item	Separate contact blocks catalog number	Included with operator suffix code	List price adder
1 N.O. 1 N.C.	CBK-CB10 CBK-CB01	10 01	\$ 8.00
1 N.O. & 1N.C. 2 N.O. 2 N.C.	CBK-CB10 + CBK-CB01 CBK-CB10 + CBK-CB10 CBK-CB01 + CBK-CB01	11 20 02	16.00

Toggle switches are complete except for contact blocks.

- To order a toggle switch operator complete with contact block, add the appropriate suffix code to the end of the catalog number and add the list price adder to the operator list price. EX: CBG-TM10, \$ 39.50
- To order just the contact block, refer to "Separate contact blocks" column and indicate catalog number and quantity. EX: CBK-CB10, qty 1, \$ 8.00

Example of individual component ordering

$$\text{CBG-TM} \quad + \quad \text{CBK-CB10} \quad = \quad \text{CBG-TM10}$$

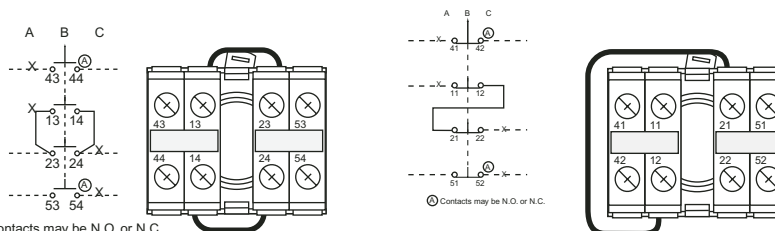
$$\text{\$ 31.50} \quad + \quad \text{\$ 8.00} \quad = \quad \text{\$ 39.50}$$

5 Contact block holders (Maximum 6 contact blocks)

To order an assembled unit with a 5 contact block holder, add the digit "5" to the end of the catalog number and add \$ 4.00 to the list price. EXAMPLE: CBG-MTS5, \$ 35.50

Double contact blocks – see page 8.70

Fig. 1 – Center position connection detail (CBG-TM & CBG-TS)



① Contacts may be N.O. or N.C.

For B position, normally open function

For B position, normally closed function

① Contact blocks can be used in the center position..
② For center position operation, see Fig. 1.

Non-illuminated Selector switches 2 position



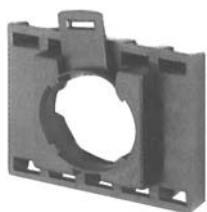
CBG-M2BMK



CBG-M2BML



CBK-CB10



5 contact block holder

Knob operator — 2 position

	Type	Color	Black plastic ring		Chrome metal ring	
			Catalog number	List price	Catalog number	List price
	Maintained	Black Red Grey	CBG-2BMK CBG-2BMKR CBG-2BMKE	\$ 23.00	CBG-M2BMK CBG-M2BMKR CBG-M2BMKE	\$ 23.00
	Momentary	Black Red Grey	CBG-2BSK CBG-2BSKR CBG-2BSKE	35.00	CBG-M2BSK CBG-M2BSKR CBG-M2BSKE	35.00
	Maintained	Black Red Grey	CBG-2AMK CBG-2AMKR CBG-2AMKE	23.00	CBG-M2AMK CBG-M2AMKR CBG-M2AMKE	23.00

Lever operator — 2 position

	Type	Color	Black plastic ring		Chrome metal ring	
			Catalog number	List price	Catalog number	List price
	Maintained	Black Red Grey	CBG-2BML CBG-2BMLR CBG-2BMLE	23.00	CBG-M2BML CBG-M2BMLR CBG-M2BMLE	23.00
	Momentary	Black Red Grey	CBG-2BSL CBG-2BSLR CBG-2BSLE	35.00	CBG-M2BSL CBG-M2BSLR CBG-M2BSLE	35.00
	Maintained	Black Red Grey	CBG-2AML CBG-2AMLR CBG-2AMLE	23.00	CBG-M2AML CBG-M2AMLR CBG-M2AMLE	23.00

Selector switch contacts

2 Position

As viewed from the front, the contacts are in the normal position with the switch handle in either the "A" or "B" position. In the "C" position, the contact(s) change state.

Contact blocks (Maximum 6 per operator)

Item	Separate contact blocks catalog number	Included with operator suffix code	List price adder
1 N.O. 1 N.C.	CBK-CB10 CBK-CB01	10 01	\$ 8.00
1 N.O. & 1N.C. 2 N.O. 2 N.C.	CBK-CB10 + CBK-CB01 CBK-CB10 + CBK-CB10 CBK-CB01 + CBK-CB01	11 20 02	16.00

Selector switches are complete except for contact blocks.

- To order a selector switch operator complete with contact block, add the appropriate suffix code to the end of the catalog number and add the list price adder to the operator list price. EX: CBG-2BMK10, **\$ 31.00**
- To order just the contact block, refer to "Separate contact blocks" column and indicate catalog number and quantity. EX: CBK-CB10, qty 1, **\$ 8.00**

Example of individual component ordering

$$\text{CBG-2BMK} \quad + \quad \text{CBK-CB10} \quad = \quad \text{CBG-2BMK10}$$

$$\quad \$ 23.00 \quad + \quad \quad \$ 8.00 \quad = \quad \quad \quad \$ 31.00$$

5 Contact block holders (Maximum 6 contact blocks)

To order an assembled unit with a 5 contact block holder, add the digit "5" to the end of the catalog number and add \$ 4.00 to the list price.

EX: CBG-2BMK5, **\$ 27.00**

To order double contact blocks used with the 5 block holder, order the following combinations separately:

Item	Catalog number	Price
2 NO 2 NC	KCB-20 KCB-02	\$ 16.00
1 NO & 1 NC	KCB-11	

Non-illuminated Selector switches 3 position



Knob operator — 3 position

Type	Color	Black plastic ring		Chrome metal ring	
		Catalog number	List price	Catalog number	List price
Maintained	Black Red Grey	CBG-3MK CBG-3MKR CBG-3MKE	\$ 23.00	CBG-M3MK CBG-M3MKR CBG-M3MKE	\$ 23.00
Momentary return from A & C position	Black Red Grey	CBG-3SK CBG-3SKR CBG-3SKE	35.00	CBG-M3SK CBG-M3SKR CBG-M3SKE	35.00
Momentary return from C position	Black Red Grey	CBG-3SRK CBG-3SRKR CBG-3SRKE	35.00	CBG-M3SRK CBG-M3SRKR CBG-M3SRKE	35.00
Momentary return from A position	Black Red Grey	CBG-3SLK CBG-3SLKR CBG-3SLKE	35.00	CBG-M3SLK CBG-M3SLKR CBG-M3SLKE	35.00

Lever operator — 3 position

Type	Color	Black plastic ring		Chrome metal ring	
		Catalog number	List price	Catalog number	List price
Maintained	Black Red Grey	CBG-3ML CBG-3MLR CBG-3MLE	\$ 23.00	CBG-M3ML CBG-M3MLR CBG-M3MLE	\$ 23.00
Momentary return from A & C position	Black Red Grey	CBG-3SL CBG-3SLR CBG-3SLE	35.00	CBG-M3SL CBG-M3SLR CBG-M3SLE	35.00
Momentary return from C position	Black Red Grey	CBG-3SRL CBG-3SRLR CBG-3SRLE	35.00	CBG-M3SRL CBG-M3SRLR CBG-M3SRLE	35.00
Momentary return from A position	Black Red Grey	CBG-3SLL CBG-3SLLR CBG-3SLE	35.00	CBG-M3SLL CBG-M3SLLR CBG-M3SLE	35.00

8

Contact blocks (Maximum 4 per operator)

Type	Separate contact blocks catalog number	Assembled to operator suffix code	List adder
1 N.O. 1 N.C.	CBK-CB10 CBK-CB01	10 01	\$ 8.00
1 N.O. & 1 N.C. 2 N.O. 2 N.C.	CBK-CB10 + CBK-CB01 CBK-CB10 + CBK-CB10 CBK-CB01 + CBK-CB01	11 20 02	16.00

Selector switches are complete except for contact blocks.

- To order a selector switch operator complete with contact block, add the appropriate suffix code to the end of the catalog number and add the list price adder to the operator list price.
EX: CBG-3MK10, \$ 31.00
- To order just the contact block, refer to "Separate contact blocks" column and indicate catalog number and quantity.
EX: CBK-CB10, qty 1, \$ 8.00

Selector switch contacts 3 Position

As viewed from the front, the contact(s) are in the normal position with the switch handle in the "B" position. In the "A" position, the left contact(s) change state. In the "C" position, the right contact(s) change state.

5 Contact block holders (Maximum 4 contact blocks)

To order an assembled unit with a 5 contact block holder, add the digit "5" to the end of the catalog number and add \$ 4.00 to the list price.
EX: CBG-3MK5, \$ 27.00

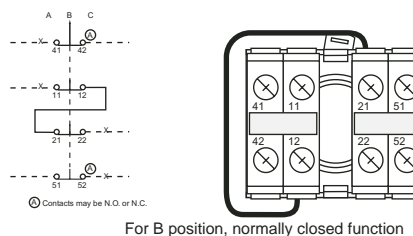
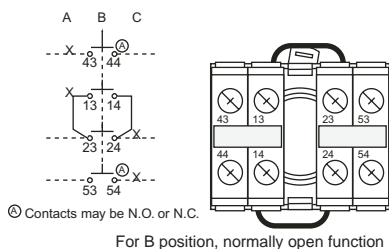
Example of individual component ordering

$$\text{CBG-3MK} \quad \$ 23.00 \quad + \quad \text{CBK-CB10} \quad \$ 8.00 \quad = \quad \text{CBG-3MK10} \quad \$ 31.00$$

To order double contact blocks used with the 5 block holder, order the following combinations separately:



Item	Catalog number	Price
2 NO	KCB-20	\$ 16.00
2 NC	KCB-02	
1 NO & 1 NC	KCB-11	

Center position connection detail



Non-illuminated Key operated selector switches

Key operated

	Description	Black plastic ring		Chrome metal ring	
		Catalog number	List price	Catalog Number	List price
 CBG-MS2KM4	2 Position Maintained Key removal from all positions Maintained Key removal from B position Momentary Key removal from B position	CBG-S2KM4		CBG-MS2KM4	
		CBG-S2KM1	\$ 60.00	CBG-MS2KM1	\$ 60.00
		CBG-S2KS1		CBG-MS2KS1	
8  CBG-MS3KM4	3 Position Maintained Key removal from all positions Maintained Key removal from B position Momentary Key removal from B position, spring return from A & C positions to B position Momentary Key removal from A position, spring return from C position to B position	CBG-S3KM4		CBG-MS3KM4	
		CBG-S3KM2	72.00	CBG-MS3KM2	72.00
		CBG-S3KS2		CBG-MS3KS2	
		CBG-S3KSR1		CBG-MS3KSR1	

Contact blocks (Maximum 4 per operator)

Type	Separate contact blocks catalog number	Assembled to operator suffix code	List adder
1 N.O. 1 N.C.	CBK-CB10 CBK-CB01	10 01	\$ 8.00
1 N.O. & 1 N.C. 2 N.O. 2 N.C.	CBK-CB10 + CBK-CB01 CBK-CB10 + CBK-CB10 CBK-CB01 + CBK-CB01	11 20 02	16.00

Selector switch contacts

2 Position

As viewed from the front, the contacts are in the normal position with the switch handle in the "B" position. In the "C" position, the contact(s) change state.

3 Position

As viewed from the front, the contact(s) are in the normal position with the switch handle in the "B" position. In the "A" position, the left contact(s) change state. In the "C" position, the right contact(s) change state.

Selector switches are complete except for contact blocks.

- To order a selector switch operator complete with contact block, add the appropriate suffix code to the end of the catalog number and add the list price adder to the operator list price. EX: CBG-S2KM410, \$ 68.00
- To order just the contact block, refer to "Separate contact blocks" column and indicate catalog number and quantity. EX: CBK-CB10, qty 1, \$ 8.00

5 Contact block holders (Maximum 4 contact blocks)

To order an assembled unit with a 5 contact block holder, add the digit "5" to the end of the catalog number and add \$ 4.00 to the list price.
EX: CBG-S2KM45, \$ 64.00

To order double contact blocks used with the 5 block holder, order the following combinations separately:

Item	Catalog number	Price
2 NO 2 NC 1 NO & 1 NC	KCB-20 KCB-02 KCB-11	\$ 16.00

Non-illuminated Potentiometers & reset actuator

Pilot Devices
Type CBG 30mm



CBG-KSP5K



CBG-KSP5K4XP



KPR3-104B3

Potentiometer — with terminal block & leads, UL Type 1

Resistance	Black plastic ring		Chrome metal ring	
	Catalog number	List price	Catalog number	List price
0 – 5 kilohm	CBG-KSP5K	\$ 125	CBG-MSP5K	\$ 125
0 – 10 kilohm	CBG-KSP10K		CBG-MSP10K	

Note: Both trimmers have resistive elements made from cermet. These types of trimmers are excellent for commercial applications. The cermet element provides a continuous contact surface for the wiper. A continuous contact surface allows the resistance value to be set closer to the desired value than a typical wire-wound resistor.

Potentiometer with 5 kΩ resistor — without terminal block & leads, UL type 1, 3R, 4, 4X, 12, 13

Bezel	Weight (Kg.)	Catalog number	List price
Black plastic	0.034	CBG-KSP5K4XP	\$ 105
Metal	0.042	CBG-MSP5K4XP	110

Potentiometer with 10 kΩ resistor

Bezel	Weight (Kg.)	Catalog number	List price
Black plastic	0.034	CBG-KSP10K4XP	\$ 105
Metal	0.042	CBG-MSP10K4XP	110

Operating knob

Bezel	Weight (Kg.)	Catalog number	List price
Black plastic	0.023	CBK-KKNOB	\$ 15
Metal	0.031	CBK-MKNOB	20

Nameplate

Bezel	Catalog number	List price
Nameplate	CBG-NPE/SP	\$ 10

Adaptor ring

Type	Catalog number	List price
Black plastic	CBK-PK3A	\$ 8
Chrome metal	CBK-PM3A	10

Technical data ①

Resistance range	0 to 5 kilohm for 5 kilohm potentiometer 0 to 10 kilohm for 10 kilohm potentiometer
Resistance tolerance	+/- 10%
Power rating	2W

Reset actuator, UL Type 4X

Item	Black plastic ring		Chrome metal ring	
	Catalog number	List price	Catalog number	List price
Black button with "RESET" engraved legend.	CBG-RB	\$ 18	CBG-MRB	\$ 18

① At room ambient: +25°C nominal and 50% relative humidity nominal.

Illuminated Extended pushbuttons Momentary

8



CBG-MPIF1R



CBG-KPIFL8R



CBK-CB10



5 contact block holder



Illuminated button

Illuminated, momentary (extended button)

Type	Black plastic ring		Chrome metal ring	
	Catalog number	List price	Catalog number	List price
Operator only ^①	CBG-KPI★	\$ 17.00	CBG-MPI★	\$ 17.00
Full voltage type 6V 12V 24V 48V 120V	CBG-KPIF6★ CBG-KPIF7★ CBG-KPIF8★ CBG-KPIF9★ CBG-KPIF1★	40.50	CBG-MPIF6★ CBG-MPIF7★ CBG-MPIF8★ CBG-MPIF9★ CBG-MPIF1★	40.50
Resistor type 120V/60V 240V/120V	CBG-KPIR1★ CBG-KPIR2★	44.50	CBG-MPIR1★ CBG-MPIR2★	44.50
Transformer type 120V/6V 240V/6V 380V/6V 480V/6V	CBG-KPIT1★ CBG-KPIT2★ CBG-KPIT3★ CBG-KPIT4★	75.50	CBG-MPIT1★ CBG-MPIT2★ CBG-MPIT3★ CBG-MPIT4★	75.50

★ Substitute the ★ for a suffix letter from the Illuminated buttons chart. Example: CBK-KPIF6R
NOTE: If a flush button is desired, add "F" suffix after the ★. Example: CBG-KPIF6RF.

Illuminated LED bulb, momentary (extended button)^{②③}

Type	Black plastic ring		Chrome metal ring	
	Catalog number	List price	Catalog number	List price
Full voltage type 24V 120V 240V	CBG-KPIFL8★ CBG-KPIFL1★ CBG-KPIFL2★	\$ 49.50 49.50 55.50	CBG-MPIFL8★ CBG-MPIFL1★ CBG-MPIFL2★	\$ 49.50 49.50 55.50
Transformer type 380V/24V 480V/24V	CBG-KPITL3★ CBG-KPITL4★	84.50	CBG-MPITL3★ CBG-MPITL4★	84.50

Contact blocks (Maximum 6 per operator)

Item	Separate contact blocks catalog number	Included with operator suffix code	List price adder
1 N.O. 1 N.C.	CBK-CB10 CBK-CB01	10 01	\$ 8.00
1 N.O. & 1 N.C. 2 N.O. 2 N.C.	CBK-CB10 + CBK-CB01 CBK-CB10 + CBK-CB10 CBK-CB01 + CBK-CB01	11 20 02	16.00

Pushbuttons are complete except for contact blocks:

- To order a pushbutton operator complete with contact block, add the appropriate suffix code to the end of the catalog number and add the list price adder to the operator list price.
EX: CBG-KPIF6R10, \$ 48.50
- To order just the contact block, refer to "Separate contact blocks" column and indicate catalog number and quantity. EX: CBK-CB10, qty 1, \$ 8.00

Example of individual component ordering

$$\text{CBG-KPIF6R} \quad + \quad \text{CBK-CB10} \quad = \quad \text{CBG-KPIF6R10}$$

$$\quad \$ 40.50 \quad \quad \quad \$ 8.00 \quad \quad \quad \quad \quad \$ 48.50$$

5 Contact block holders (Maximum 6 contact blocks)

To order an assembled unit with a 5 contact block holder, add the digit "5" to the end of the catalog number and add \$ 4.00 to the list price. EX: CBG-KPIF6R5, \$ 44.50

★ Illuminated buttons

Button color	Suffix code
Red	R
Green	G
Yellow	Y
Blue	L
Clear ^④	C
White	W

① Lamp module and bulb must be ordered separately; see pages 8.84.

② White LEDs use clear lenses.

③ For blue or white LED, add \$ 3.00 to list price.

④ To order lens insert, refer to the lens inserts selection chart on pages 8.43 - 8.44 and place the appropriate suffix code at the end of the catalog number (but before the contact block suffix code, if there is one) and add \$.90 to the list price.

Illuminated Extended pushbuttons Maintained

Pilot Devices
Type CBG 30mm



CBG-MPPIF1R



CBG-KPPIFL8R



CBK-CB10



5 contact block holder



Illuminated button

Illuminated, maintained push-push (extended)

Type	Black plastic ring		Chrome metal ring	
	Catalog number	List price	Catalog number	List price
Operator only ①	CBG-KPPI★	\$ 34.20	CBG-MPPI★	\$ 34.20
Full voltage type 6V 12V 24V 48V 120V	CBG-KPPIF6★ CBG-KPPIF7★ CBG-KPPIF8★ CBG-KPPIF9★ CBG-KPPIF1★	57.70	CBG-MPPIF6★ CBG-MPPIF7★ CBG-MPPIF8★ CBG-MPPIF9★ CBG-MPPIF1★	57.70
Resistor type 120V/60V 240V/120V	CBG-KPPIR1★ CBG-KPPIR2★	61.70	CBG-MPPIR1★ CBG-MPPIR2★	61.70
Transformer type 120V/6V 240V/6V 380V/6V 480V/6V	CBG-KPPI1★ CBG-KPPI2★ CBG-KPPI3★ CBG-KPPI4★	92.70	CBG-MPPI1★ CBG-MPPI2★ CBG-MPPI3★ CBG-MPPI4★	92.70

★ Substitute the ★ for a suffix letter from the Illuminated buttons chart. Example: CBG-KPPIF6R
NOTE: If a flush button is desired, add "F" suffix after the ★. Example: CBG-KPPIF6RF.

Illuminated LED bulb, maintained push-push (extended)②③

Type	Black plastic ring		Chrome metal ring	
	Catalog number	List price	Catalog number	List price
Full voltage type 24V 120V 240	CBG-KPPIFL8★ CBG-KPPIFL1★ CBG-KPPIFL2★	\$ 66.70 66.70 72.70	CBG-MPPIFL8★ CBG-MPPIFL1★ CBG-MPPIFL2★	\$ 66.70 66.70 72.70
Transformer type 380V/24V 480V/24V	CBG-KPPI3★ CBG-KPPI4★	101.70	CBG-MPPI3★ CBG-MPPI4★	101.70

Contact blocks (Maximum 6 per operator)

Item	Separate contact blocks catalog number	Included with operator suffix code	List price adder
1 N.O. 1 N.C.	CBK-CB10 CBK-CB01	10 01	\$ 8.00
1 N.O. & 1 N.C. 2 N.O. 2 N.C.	CBK-CB10 + CBK-CB01 CBK-CB10 + CBK-CB10 CBK-CB01 + CBK-CB01	11 20 02	16.00

Pushbuttons are complete except for contact blocks:

- To order a pushbutton operator complete with contact block, add the appropriate suffix code to the end of the catalog number and add the list price adder to the operator list price.
EX: CBG-KPPIF6R10, \$ 65.70
- To order just the contact block, refer to "Separate Contact Blocks" column and indicate catalog number and quantity. EX: CBK-CB10, qty 1, \$ 8.00

Example of individual component ordering

$$\text{CBG-KPPIR} + \text{Transformer (if required)} + \text{Lamp module CBK-LMF } \$ 17.50 + \text{Lamp bulb CBK-LB6 } \$ 6.00 + \text{CBK-CB10 } \$ 8.00 = \text{CBG-KPPIF6R10 } \$ 65.70$$

5 Contact block holders (Maximum 6 contact blocks)

To order an assembled unit with a 5 contact block holder, add the digit "5" to the end of the catalog number and add \$ 4.00 to the list price. EX: CBG-KPPIF6R5, \$ 61.70

Double contact blocks – see page 8.74

★ Illuminated buttons

Button color	Suffix code
Red	R
Green	G
Yellow	Y
Blue	L
Clear ④	C
White	W

① Lamp module and bulb must be ordered separately; see pages 8.84.

② White LEDs use a clear lens.

③ For blue or white LEDs, add \$ 3.00 to list price.

④ To order lens insert, refer to the lens inserts selection chart on pages 8.43 - 8.44 and place the appropriate suffix code at the end of the catalog number (but before the contact block suffix code, if there is one) and add \$ 0.90 to the list price.

Illuminated Mushroom pushbuttons, 40mm Momentary



CBG-MPM40IF1Y



CBG-KPM40IFL1Y

Illuminated mushrooms, 40mm

Type	Black plastic ring		Chrome metal ring	
	Catalog number	List price	Catalog number	List price
Operator only ①	CBG-KPM40I★	\$ 44.00	CBG-MPM40I★	\$ 44.00
Full voltage type 6V 12V 24V 48V 120V	CBG-KPM40IF6★ CBG-KPM40IF7★ CBG-KPM40IF8★ CBG-KPM40IF9★ CBG-KPM40IF1★	67.50	CBG-MPM40IF6★ CBG-MPM40IF7★ CBG-MPM40IF8★ CBG-MPM40IF9★ CBG-MPM40IF1★	67.50
Resistor type 120V/60V 240V/120V	CBG-KPM40IR1★ CBG-KPM40IR2★	71.50	CBG-MPM40IR1★ CBG-MPM40IR2★	71.50
Transformer type 120V/6V 240V/6V 380V/6V 480V/6V	CBG-KPM40IT1★ CBG-KPM40IT2★ CBG-KPM40IT3★ CBG-KPM40IT4★	102.50	CBG-MPM40IT1★ CBG-MPM40IT2★ CBG-MPM40IT3★ CBG-MPM40IT4★	102.50

Illuminated mushrooms with LED bulbs, 40mm

Type	Black plastic ring		Chrome metal ring	
	Catalog number	List price	Catalog number	List price
Full voltage type 24V 120V 240V	CBG-KPM40IFL8★ CBG-KPM40IFL1★ CBG-KPM40IFL2★	\$ 76.50 76.50 82.50	CBG-MPM40IFL8★ CBG-MPM40IFL1★ CBG-MPM40IFL2★	\$ 76.50 76.50 82.50
Transformer type 380V/24V 480V/24V	CBG-KPM40ITL3★ CBG-KPM40ITL4★	111.50	CBG-MPM40ITL3★ CBG-MPM40ITL4★	111.50

★ Illuminated buttons

Button color	Suffix code
Red	R
Yellow	Y
Green	G

Contact blocks (Maximum 5 per operator)

Item	Separate contact blocks catalog number	Included with operator suffix code	List price adder
1 N.O. 1 N.C.	CBK-CB10 CBK-CB01	10 01	\$ 8.00
1 N.O. & 1 N.C. 2 N.O. 2 N.C.	CBK-CB10 + CBK-CB01 CBK-CB10 + CBK-CB10 CBK-CB01 + CBK-CB01	11 20 02	16.00

Pushbuttons are complete except for contact blocks:

- To order a pushbutton operator complete with contact block, add the appropriate suffix code to the end of the catalog number and add the list price adder to the operator list price. EX: CBG-KPM40IF1R5, \$ 75.50
- To order just the contact block, refer to "Separate contact blocks" column and indicate catalog number and quantity. EX: CBK-CB10, qty 1, \$ 8.00

Example of individual component ordering

$$\text{CBG-KPM40IF1R} + \text{CBK-CB10} = \text{CBG-KPM40IF1R10}$$

$$\text{\$ 67.50} + \text{\$ 8.00} = \text{\$ 75.50}$$

5 Contact block holders (Maximum 5 contact blocks)

To order an assembled unit with a 5 contact block holder, add the digit "5" to the end of the catalog number and add \$ 4.00 to the list price. EX: CBG-KPM40IF1R5, \$ 71.50

To order double contact blocks used with the 5 block holder, order the following combinations separately:

Item	Catalog number	Price
2 NO	KCB-20	\$ 16.00
2 NC	KCB-02	
1 NO & 1 NC	KCB-11	

① Lamp module and bulb must be ordered separately; see pages 8.84.

Illuminated Mushroom pushbuttons, 60mm Illuminated, momentary



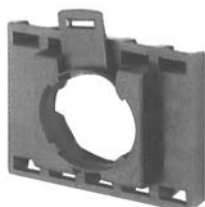
CBG-MPM6IF1R



CBG-KPM6IFL1R



CBK-CB10



5 contact block holder

Illuminated mushrooms, 60mm

Type	Black plastic ring		Chrome metal ring	
	Catalog number	List price	Catalog number	List price
Operator only ①	CBG-KPM6I★	\$ 48.00	CBG-MPM6I★	\$ 48.00
Full voltage type 6V 12V 24V 48V 120V	CBG-KPM6IF6★ CBG-KPM6IF7★ CBG-KPM6IF8★ CBG-KPM6IF9★ CBG-KPM6IF1★	71.50	CBG-MPM6IF6★ CBG-MPM6IF7★ CBG-MPM6IF8★ CBG-MPM6IF9★ CBG-MPM6IF1★	71.50
Resistor type 120V/60V 240V/120V	CBG-KPM6IR1★ CBG-KPM6IR2★	75.50	CBG-MPM6IR1★ CBG-MPM6IR2★	75.50
Transformer type 120V/6V 240V/6V 380V/6V 480V/6V	CBG-KPM6IT1★ CBG-KPM6IT2★ CBG-KPM6IT3★ CBG-KPM6IT4★	106.50	CBG-MPM6IT1★ CBG-MPM6IT2★ CBG-MPM6IT3★ CBG-MPM6IT4★	106.50

Illuminated mushrooms with LED bulbs, 60mm

Type	Black plastic ring		Chrome metal ring	
	Catalog number	List price	Catalog number	List price
Full voltage type 24V 120V 240V	CBG-KPM6IFL8★ CBG-KPM6IFL1★ CBG-KPM6IFL2★	\$ 80.50 80.50 86.50	CBG-MPM6IFL8★ CBG-MPM6IFL1★ CBG-MPM6IFL2★	\$ 80.50 80.50 86.50
Transformer type 380V/24V 480V/24V	CBG-KPM6ITL3★ CBG-KPM6ITL4★	115.50	CBG-MPM6ITL3★ CBG-MPM6ITL4★	115.50

★ Illuminated buttons

Button color	Suffix code
Red	R
Yellow	Y
Green	G

Contact blocks (Maximum 5 per operator)

Item	Separate contact blocks catalog number	Included with operator suffix code	List price adder
1 N.O. 1 N.C.	CBK-CB10 CBK-CB01	10 01	\$ 8.00
1 N.O. & 1 N.C. 2 N.O. 2 N.C.	CBK-CB10 + CBK-CB01 CBK-CB10 + CBK-CB10 CBK-CB01 + CBK-CB01	11 20 02	16.00

Pushbuttons are complete except for contact blocks:

- To order a pushbutton operator complete with contact block, add the appropriate suffix code to the end of the catalog number and add the list price adder to the operator list price. EX: CBG-KPM6IF1R10, \$ 79.50
- To order just the contact block, refer to "Separate contact blocks" column and indicate catalog number and quantity. EX: CBK-CB10, qty 1, \$ 8.00

Example of individual component ordering

$$\text{CBG-KPM6IF1R} \quad + \quad \text{CBK-CB10} \quad = \quad \text{CBG-KPM6IF1R10}$$

$$\$ 71.50 \quad \quad \quad \$ 8.00 \quad \quad \quad \$ 79.50$$

5 Contact block holders (Maximum 5 contact blocks)

To order an assembled unit with a 5 contact block holder, add the digit "5" to the end of the catalog number and add \$ 4.00 to the list price. EX: CBG-KPM6IF1R5, \$ 75.50

To order double contact blocks used with the 5 block holder, order the following combinations separately:

Item	Catalog number	Price
2 NO	KCB-20	\$ 16.00
2 NC	KCB-02	
1 NO & 1 NC	KCB-11	

① Lamp module and bulb must be ordered separately; see pages 8.84.

Illuminated Emergency stop pushbuttons, 40mm ①②③④ Twist-release

8



Twist-release with incandescent bulbs

Type	Black plastic ring		Chrome metal ring	
	Catalog number	List price	Catalog number	List price
Operator only ⑤	CBG-KEST4IR	\$ 44.00	CBG-MEST4IR	\$ 46.00
Full voltage type 6V 12V 24V 48V 120V	CBG-KEST4IF6R CBG-KEST4IF7R CBG-KEST4IF8R CBG-KEST4IF9R CBG-KEST4IF1R	67.50	CBG-MEST4IF6R CBG-MEST4IF7R CBG-MEST4IF8R CBG-MEST4IF9R CBG-MEST4IF1R	69.50
Resistor type 120V/60V 240V/120V	CBG-KEST4IR1R CBG-KEST4IR2R	71.50	CBG-MEST4IR1R CBG-MEST4IR2R	73.50
Transformer type 120V/6V 240V/6V 380V/6V 480V/6V	CBG-KEST4IT1R CBG-KEST4IT2R CBG-KEST4IT3R CBG-KEST4IT4R	102.50	CBG-MEST4IT1R CBG-MEST4IT2R CBG-MEST4IT3R CBG-MEST4IT4R	104.50
Transformer type 120V/24V 240V/24V 380V/24V 480V/24V	CBG-KEST4IT5R CBG-KEST4IT6R CBG-KEST4IT7R CBG-KEST4IT8R	102.50	CBG-MEST4IT5R CBG-MEST4IT6R CBG-MEST4IT7R CBG-MEST4IT8R	104.50

Twist-release with LED bulbs

Type	Black plastic ring		Chrome metal ring	
	Catalog number	List price	Catalog number	List price
Operator only ⑤	CBG-KEST4IR	\$ 44.00	CBG-MEST4IR	\$ 46.00
Full voltage type 24V 120V 240V	CBG-KEST4IFL8R CBG-KEST4IFL1R CBG-KEST4IFL2R	76.50 76.50 82.50	CBG-MEST4IFL8R CBG-MEST4IFL1R CBG-MEST4IFL2R	78.50 78.50 84.50
Transformer type 120V/24V 240V/24V 380V/24V 480V/24V	CBG-KEST4ITL5R CBG-KEST4ITL6R CBG-KEST4ITL7R CBG-KEST4ITL8R	111.50	CBG-MEST4ITL5R CBG-MEST4ITL6R CBG-MEST4ITL7R CBG-MEST4ITL8R	113.50

Contact block holder

Item	Catalog number	List price adder
Contact block holder	CBK-ESCH	\$ 2.00

Contact blocks (Maximum 4 per operator)

Item	Separate contact blocks catalog number	Included with operator suffix code	List price adder
1 N.O. 1 N.C.	CBK-CB10 CBK-CB01	10 01	\$ 8.00
1 N.O. & 1N.C. 2 N.O. 2 N.C.	CBK-CB10 + CBK-CB01 CBK-CB10 + CBK-CB10 CBK-CB01 + CBK-CB01	11 20 02	16.00

Pushbuttons are complete except for contact blocks:

- To order a pushbutton operator complete with contact block, add the appropriate suffix code to the end of the catalog number and add the list price adder to the operator list price. EX: CBK-KEST4IF1R01, **\$ 75.50**
- To order just the contact block, refer to "Separate contact blocks" column and indicate catalog number and quantity. EX: CBK-CB01, qty 1, **\$ 8.00**

Example of individual component ordering

$$\begin{array}{r}
 \text{CBG-KEST4R} \\
 \$ 44.00
 \end{array}
 +
 \begin{array}{r}
 \text{CBK-CB01} \\
 \$ 8.00
 \end{array}
 =
 \begin{array}{r}
 \text{CBG-KEST4R01} \\
 \$ 52.00
 \end{array}$$

① All operators on this page comply with EN418 & IEC947-5-5 standards.
 ② Use adapter plate described on page 8.52 when using CBK-EP series enclosures.
 ③ Can not use CBK-H5.
 ④ See page 8.49 for 30mm adaptor ring.
 ⑤ Lamp module and bulb must be ordered separately; see page 8.84.

Illuminated Emergency stop pushbuttons, 40mm ①②③④ Push-pull

Pilot Devices
Type CBG 30mm



CBG-KESP4R



CBG-MESP41R



CBK-ESCH



CBK-CB10

Push-pull with incandescent bulbs

Type	Black plastic ring		Chrome metal ring	
	Catalog number	List price	Catalog number	List price
Operator only ⑤	CBG-KESP4IR	\$ 44.00	CBG-MESP4IR	\$ 46.00
Full voltage type				
6V	CBG-KESP4IF6R	67.50	CBG-MESP4IF6R	69.50
12V	CBG-KESP4IF7R		CBG-MESP4IF7R	
24V	CBG-KESP4IF8R		CBG-MESP4IF8R	
48V	CBG-KESP4IF9R		CBG-MESP4IF9R	
120V	CBG-KESP4IF1R		CBG-MESP4IF1R	
Resistor type				
120V/60V	CBG-KESP4IR1R	71.50	CBG-MESP4IR1R	73.50
240V/120V	CBG-KESP4IR2R		CBG-MESP4IR2R	
Transformer type				
120V/6V	CBG-KESP4IT1R	102.50	CBG-MESP4IT1R	104.50
240V/6V	CBG-KESP4IT2R		CBG-MESP4IT2R	
380V/6V	CBG-KESP4IT3R		CBG-MESP4IT3R	
480V/6V	CBG-KESP4IT4R		CBG-MESP4IT4R	
120V/24V	CBG-KESP4IT5R	102.50	CBG-MESP4IT5R	104.50
240V/24V	CBG-KESP4IT6R		CBG-MESP4IT6R	
380V/24V	CBG-KESP4IT7R		CBG-MESP4IT7R	
480V/24V	CBG-KESP4IT8R		CBG-MESP4IT8R	

8

Push-pull with LED bulbs

Type	Black plastic ring		Chrome metal ring	
	Catalog number	List price	Catalog number	List price
Operator only ⑤	CBG-KESP4IR	\$ 44.00	CBG-MESP4IR	\$ 46.00
Full voltage type				
24V	CBG-KESP4IFL8R	76.50	CBG-MESP4IFL8R	78.50
120V	CBG-KESP4IFL1R	76.50	CBG-MESP4IFL1R	78.50
240V	CBG-KESP4IFL2R	82.50	CBG-MESP4IFL2R	84.50
Transformer type				
120V/24V	CBG-KESP4ITL5R	111.50	CBG-MESP4ITL5R	113.50
240V/24V	CBG-KESP4ITL6R		CBG-MESP4ITL6R	
380V/24V	CBG-KESP4ITL7R		CBG-MESP4ITL7R	
480V/24V	CBG-KESP4ITL8R		CBG-MESP4ITL8R	

Contact block holder

Item	Catalog number	List price adder
Contact block holder	CBK-ESCH	\$ 2.00

Contact blocks (Maximum 4 per operator)

Item	Separate contact blocks catalog number	Included with operator suffix code	List price adder
1 N.O. 1 N.C.	CBK-CB10 CBK-CB01	10 01	\$ 8.00
1 N.O. & 1N.C. 2 N.O. 2 N.C.	CBK-CB10 + CBK-CB01 CBK-CB10 + CBK-CB10 CBK-CB01 + CBK-CB01	11 20 02	16.00

Pushbuttons are complete except for contact blocks:

- To order a pushbutton operator complete with contact block, add the appropriate suffix code to the end of the catalog number and add the list price adder to the operator list price. EX: CBG-KESP4IF1R01, \$ 75.50
- To order just the contact block, refer to "Separate contact blocks" column and indicate catalog number and quantity. EX: CBK-CB01, qty 1, \$ 8.00

Example of individual component ordering

$$\text{CBG-KEST4R} \quad \text{CBK-CB01} = \text{CBG-KEST4R01}$$

$$\$ 44.00 \quad + \quad \$ 8.00 \quad = \quad \$ 52.00$$

- ① All operators on this page comply with EN418 & IEC947-5-5 standards.
- ② Use adapter plate described on page 8.52 when using CBK-EP series enclosures.
- ③ Can not use CBK-H5.
- ④ See page 8.49 for 30mm adaptor ring.
- ⑤ Lamp module and bulb must be ordered separately; see page 8.84.

Illuminated Emergency stop pushbuttons, 60mm ①②③④ Twist-release



CBG-KEST6IR



CBG-MEST6IR



CBK-ESCH



CBK-CB10

Twist-release with incandescent bulbs

Type	Black plastic ring		Chrome metal ring	
	Catalog number	List price	Catalog number	List price
Operator only ⑤	CBG-KEST6IR	\$ 56.00	CBG-MEST6IR	\$ 58.00
Full voltage type 6V 12V 24V 48V 120V	CBG-KEST6IF6R CBG-KEST6IF7R CBG-KEST6IF8R CBG-KEST6IF9R CBG-KEST6IF1R	79.50	CBG-MEST6IF6R CBG-MEST6IF7R CBG-MEST6IF8R CBG-MEST6IF9R CBG-MEST6IF1R	81.50
Resistor type 120V/60V 240V/120V	CBG-KEST6IR1R CBG-KEST6IR2R	83.50	CBG-MEST6IR1R CBG-MEST6IR2R	85.50
Transformer type 120V/6V 240V/6V 380V/6V 480V/6V	CBG-KEST6IT1R CBG-KEST6IT2R CBG-KEST6IT3R CBG-KEST6IT4R	114.50	CBG-MEST6IT1R CBG-MEST6IT2R CBG-MEST6IT3R CBG-MEST6IT4R	116.50
Transformer type 120V/24V 240V/24V 380V/24V 480V/24V	CBG-KEST6IT5R CBG-KEST6IT6R CBG-KEST6IT7R CBG-KEST6IT8R	114.50	CBG-MEST6IT5R CBG-MEST6IT6R CBG-MEST6IT7R CBG-MEST6IT8R	116.50

Twist-release with LED bulbs

Type	Black plastic ring		Chrome metal ring	
	Catalog number	List price	Catalog number	List price
Operator only ⑤	CBG-KEST6IR	\$ 56.00	CBG-MEST6IR	\$ 58.00
Full voltage type 24V 120V 240V	CBG-KEST6IFL8R CBG-KEST6IFL1R CBG-KEST6IFL2R	88.50 88.50 94.50	CBG-MEST6IFL8R CBG-MEST6IFL1R CBG-MEST6IFL2R	90.50 90.50 96.50
Transformer type 120V/24V 240V/24V 380V/24V 480V/24V	CBG-KEST6ITL5R CBG-KEST6ITL6R CBG-KEST6ITL7R CBG-KEST6ITL8R	123.50	CBG-MEST6ITL5R CBG-MEST6ITL6R CBG-MEST6ITL7R CBG-MEST6ITL8R	125.50

Contact block holder

Item	Catalog number	List price adder
Contact block holder	CBK-ESCH	\$ 2.00

Contact blocks (Maximum 4 per operator)

Item	Separate contact blocks catalog number	Included with operator suffix code	List price adder
1 N.O. 1 N.C.	CBK-CB10 CBK-CB01	10 01	\$ 8.00
1 N.O. & 1N.C. 2 N.O. 2 N.C.	CBK-CB10 + CBK-CB01 CBK-CB10 + CBK-CB10 CBK-CB01 + CBK-CB01	11 20 02	16.00

Pushbuttons are complete except for contact blocks:

- To order a pushbutton operator complete with contact block, add the appropriate suffix code to the end of the catalog number and add the list price adder to the operator list price. EX: CBG-KEST6IF1R01, \$ 87.50
- To order just the contact block, refer to "Separate contact blocks" column and indicate catalog number and quantity. EX: CBK-CB01, qty 1, \$ 8.00

Example of individual component ordering

$$\text{CBG-KEST4R} \quad \text{CBK-CB01} = \text{CBG-KEST4R01}$$

$$\$ 44.00 \quad + \quad \$ 8.00 \quad = \quad \$ 52.00$$

- ① All operators on this page comply with EN418 & IEC947-5-5 standards.
- ② Use adapter plate described on page 8.52 when using CBK-EP series enclosures.
- ③ Can not use CBK-H5.
- ④ See page 8.49 for 30mm adaptor ring.
- ⑤ Lamp module and bulb must be ordered separately; see page 8.84.

Illuminated Emergency stop pushbuttons, 60mm ①②③④ Push-pull

Pilot Devices
Type CBG 30mm



CBG-KESP6IR



CBG-MESP6IR



CBK-ESCH



CBK-CB10

Push-pull with incandescent bulbs

Type	Black plastic ring		Chrome metal ring	
	Catalog number	List price	Catalog number	List price
Operator only ⑤	CBG-KESP6IR	\$ 56.00	CBG-MESP6IR	\$ 58.00
Full voltage type				
6V	CBG-KESP6IF6R	79.50	CBG-MESP6IF6R	81.50
12V	CBG-KESP6IF7R		CBG-MESP6IF7R	
24V	CBG-KESP6IF8R		CBG-MESP6IF8R	
48V	CBG-KESP6IF9R		CBG-MESP6IF9R	
120V	CBG-KESP6IF1R		CBG-MESP6IF1R	
Resistor type				
120V/60V	CBG-KESP6IR1R	83.50	CBG-MESP6IR1R	85.50
240V/120V	CBG-KESP6IR2R		CBG-MESP6IR2R	
Transformer type				
120V/6V	CBG-KESP6IT1R	114.50	CBG-MESP6IT1R	116.50
240V/6V	CBG-KESP6IT2R		CBG-MESP6IT2R	
380V/6V	CBG-KESP6IT3R		CBG-MESP6IT3R	
480V/6V	CBG-KESP6IT4R		CBG-MESP6IT4R	
120V/24V	CBG-KESP6IT5R	114.50	CBG-MESP6IT5R	116.50
240V/24V	CBG-KESP6IT6R		CBG-MESP6IT6R	
380V/24V	CBG-KESP6IT7R		CBG-MESP6IT7R	
480V/24V	CBG-KESP6IT8R		CBG-MESP6IT8R	

8

Push-pull with LED bulbs

Type	Black plastic ring		Chrome metal ring	
	Catalog number	List price	Catalog number	List price
Operator only ⑤	CBG-KESP6IR	\$ 56.00	CBG-MESP6IR	\$ 58.00
Full voltage type				
24V	CBG-KESP6IFL8R	88.50	CBG-MESP6IFL8R	90.50
120V	CBG-KESP6IFL1R	88.50	CBG-MESP6IFL1R	90.50
240V	CBG-KESP6IFL2R	94.50	CBG-MESP6IFL2R	96.50
Transformer type				
120V/24V	CBG-KESP6ITL5R	123.50	CBG-MESP6ITL5R	125.50
240V/24V	CBG-KESP6ITL6R		CBG-MESP6ITL6R	
380V/24V	CBG-KESP6ITL7R		CBG-MESP6ITL7R	
480V/24V	CBG-KESP6ITL8R		CBG-MESP6ITL8R	

Contact block holder

Item	Catalog number	List price adder
Contact block holder	CBK-ESCH	\$ 2.00

Contact blocks (Maximum 4 per operator)

Item	Separate contact blocks catalog number	Included with operator suffix code	List price adder
1 N.O. 1 N.C.	CBK-CB10 CBK-CB01	10 01	\$ 8.00
1 N.O. & 1 N.C. 2 N.O. 2 N.C.	CBK-CB10 + CBK-CB01 CBK-CB10 + CBK-CB10 CBK-CB01 + CBK-CB01	11 20 02	16.00

Pushbuttons are complete except for contact blocks:

- To order a pushbutton operator complete with contact block, add the appropriate suffix code to the end of the catalog number and add the list price adder to the operator list price. EX: CBG-KESP6IF1R01, \$ 87.50
- To order just the contact block, refer to "Separate contact blocks" column and indicate catalog number and quantity. EX: CBK-CB01, qty 1, \$ 8.00

Example of individual component ordering

$$\text{CBG-KEST4R} \quad \text{CBK-CB01} = \text{CBG-KEST4R01}$$

$$\$ 44.00 \quad + \quad \$ 8.00 \quad = \quad \$ 52.00$$

- ① All operators on this page comply with EN418 & IEC947-5-5 standards.
- ② Use adapter plate described on page 8.52 when using CBK-EP series enclosures.
- ③ Can not use CBK-H5.
- ④ See page 8.49 for 30mm adaptor ring.
- ⑤ Lamp module and bulb must be ordered separately; see page 8.84.

Illuminated Selector switches 2 position



CBG-M2BMKIY



CBG-M2BMLIY



CBK-CB10



5 contact block holder

Knob operator — 2 position[Ⓞ]

	Type	Color	Black plastic ring		Chrome metal ring	
			Catalog number	List price	Catalog number	List price
	Maintained	Clear	CBG-2BMKIC	\$ 37.00	CBG-M2BMKIC	\$ 37.00
		Red	CBG-2BMKIR		CBG-M2BMKIR	
		Green	CBG-2BMKIG		CBG-M2BMKIG	
		Yellow	CBG-2BMKIY		CBG-M2BMKIY	
		Blue	CBG-2BMKIL		CBG-M2BMKIL	
	Momentary	Clear	CBG-2BSKIC	49.00	CBG-M2BSKIC	49.00
		Red	CBG-2BSKIR		CBG-M2BSKIR	
		Green	CBG-2BSKIG		CBG-M2BSKIG	
		Yellow	CBG-2BSKIY		CBG-M2BSKIY	
		Blue	CBG-2BSKIL		CBG-M2BSKIL	
	Maintained	Clear	CBG-2AMKIC	37.00	CBG-M2AMKIC	37.00
		Red	CBG-2AMKIR		CBG-M2AMKIR	
		Green	CBG-2AMKIG		CBG-M2AMKIG	
		Yellow	CBG-2AMKIY		CBG-M2AMKIY	
		Blue	CBG-2AMKIL		CBG-M2AMKIL	

Lever operator — 2 position[Ⓞ]

	Type	Color	Black plastic ring		Chrome metal ring	
			Catalog number	List price	Catalog number	List price
	Maintained	Clear	CBG-2BMLIC	\$ 37.00	CBG-M2BMLIC	\$ 37.00
		Red	CBG-2BMLIR		CBG-M2BMLIR	
		Green	CBG-2BMLIG		CBG-M2BMLIG	
		Yellow	CBG-2BMLIY		CBG-M2BMLIY	
		Blue	CBG-2BMLIL		CBG-M2BMLIL	
	Momentary	Clear	CBG-2BSLIC	49.00	CBG-M2BSLIC	49.00
		Red	CBG-2BSLIR		CBG-M2BSLIR	
		Green	CBG-2BSLIG		CBG-M2BSLIG	
		Yellow	CBG-2BSLIY		CBG-M2BSLIY	
		Blue	CBG-2BSLIL		CBG-M2BSLIL	
	Maintained	Clear	CBG-2AMLIC	37.00	CBG-M2AMLIC	37.00
		Red	CBG-2AMLIR		CBG-M2AMLIR	
		Green	CBG-2AMLIG		CBG-M2AMLIG	
		Yellow	CBG-2AML IY		CBG-M2AML IY	
		Blue	CBG-2AMLIL		CBG-M2AMLIL	

Contact blocks (Maximum 4 per operator)

Item	Separate contact blocks catalog number	Included with operator suffix code	List price adder
1 N.O. 1 N.C.	CBK-CB10 CBK-CB01	10 01	\$ 8.00
1 N.O. & 1 N.C. 2 N.O. 2 N.C.	CBK-CB10 + CBK-CB01 CBK-CB10 + CBK-CB10 CBK-CB01 + CBK-CB01	11 20 02	16.00

Illuminated selector switches are complete except for lamp modules, lamp bulbs, and contact blocks which should be ordered as separate components. EX: To order a knob selector switch operator with a red 120V full voltage light and 2 N.O. contact blocks:

- CBK-2BMKIR \$ 37.00
- CBK-LMF 17.50
- CBK-LB1 6.00
- (2) CBK-CB10 16.00
- TOTAL \$ 76.50**

5 Contact block holders (Maximum 4 contact blocks)

To order an assembled unit with a 5 contact block holder, add the digit "5" to the end of the catalog number and add \$ 4.00 to the list price.

EX: CBG-2BMKIR5, \$ 41.00

Selector switch contacts — 2 position

As viewed from the front, the contacts are in the normal position with the switch handle in either the "A" or "B" position. In the "C" position, the contact(s) change state.

To order double contact blocks used with the 5 block holder, order the following combinations separately:

Item	Catalog number	Price
2 NO 2 NC	KCB-20 KCB-02	\$ 16.00
1 NO & 1 NC	KCB-11	

[Ⓞ] Lamp module and bulb must be ordered separately; see pages 8.84.

Illuminated Selector switches 3 position

Pilot Devices
Type CBG 30mm



Knob operator — 3 position[Ⓞ]

	Type	Color	Black plastic ring		Chrome metal ring	
			Catalog number	List price	Catalog number	List price
	Maintained	Clear	CBG-3MKIC	\$ 37.00	CBG-M3MKIC	\$ 37.00
		Red	CBG-3MKIR		CBG-M3MKIR	
		Green	CBG-3MKIG		CBG-M3MKIG	
		Yellow	CBG-3MKIY		CBG-M3MKIY	
		Blue	CBG-3MKIL		CBG-M3MKIL	
	Momentary return from A & C position	Clear	CBG-3SKIC	49.00	CBG-M3SKIC	49.00
		Red	CBG-3SKIR		CBG-M3SKIR	
		Green	CBG-3SKIG		CBG-M3SKIG	
		Yellow	CBG-3SKIY		CBG-M3SKIY	
		Blue	CBG-3SKIL		CBG-M3SKIL	
	Momentary return from C position	Clear	CBG-3SRKIC	49.00	CBG-M3SRKIC	49.00
		Red	CBG-3SRKIR		CBG-M3SRKIR	
		Green	CBG-3SRKIG		CBG-M3SRKIG	
		Yellow	CBG-3SRKIY		CBG-M3SRKIY	
		Blue	CBG-3SRKIL		CBG-M3SRKIL	
	Momentary return from A position	Clear	CBG-3SLKIC	49.00	CBG-M3SLKIC	49.00
		Red	CBG-3SLKIR		CBG-M3SLKIR	
		Green	CBG-3SLKIG		CBG-M3SLKIG	
		Yellow	CBG-3SLKIY		CBG-M3SLKIY	
		Blue	CBG-3SLKIL		CBG-M3SLKIL	

Lever operator — 3 position[Ⓞ]

	Type	Color	Black plastic ring		Chrome metal ring	
			Catalog number	List price	Catalog number	List price
	Maintained	Clear	CBG-3MLIC	\$ 37.00	CBG-M3MLIC	\$ 37.00
		Red	CBG-3MLIR		CBG-M3MLIR	
		Green	CBG-3MLIG		CBG-M3MLIG	
		Yellow	CBG-3MLIY		CBG-M3MLIY	
		Blue	CBG-3MLIL		CBG-M3MLIL	
	Momentary return from A & C position	Clear	CBG-3SLIC	49.00	CBG-M3SLIC	49.00
		Red	CBG-3SLIR		CBG-M3SLIR	
		Green	CBG-3SLIG		CBG-M3SLIG	
		Yellow	CBG-3SLIY		CBG-M3SLIY	
		Blue	CBG-3SLIL		CBG-M3SLIL	
	Momentary return from C position	Clear	CBG-3SRLIC	49.00	CBG-M3SRLIC	49.00
		Red	CBG-3SRLIR		CBG-M3SRLIR	
		Green	CBG-3SRLIG		CBG-M3SRLIG	
		Yellow	CBG-3SRLIY		CBG-M3SRLIY	
		Blue	CBG-3SRLIL		CBG-M3SRLIL	
	Momentary return from A position	Clear	CBG-3SLLIC	49.00	CBG-M3SLLIC	49.00
		Red	CBG-3SLLIR		CBG-M3SLLIR	
		Green	CBG-3SLLIG		CBG-M3SLLIG	
		Yellow	CBG-3SLLIY		CBG-M3SLLIY	
		Blue	CBG-3SLLIL		CBG-M3SLLIL	

Contact blocks (Maximum 4 per operator)

Item	Separate contact blocks catalog number	Assembled to operator suffix code	List adder
1 N.O.	CBK-CB10	10	\$ 8.00
1 N.C.	CBK-CB01	01	
1 N.O. & 1 N.C.	CBK-CB10 + CBK-CB01	11	16.00
2 N.O.	CBK-CB10 + CBK-CB10	20	
2 N.C.	CBK-CB01 + CBK-CB01	02	

Illuminated selector switches are complete except for lamp modules, lamp bulbs, and contact blocks which should be ordered as separate components.
EX: To order a knob selector switch operator with a red 120V full voltage light and 2 N.O. contact blocks:

• CBG-3MKIR	\$ 37.00
• CBK-LMF	17.50
• CBK-LB1	6.00
• (2) CBK-CB10	16.00
TOTAL	\$ 76.50

Selector switch contacts

3 Position

As viewed from the front, the contact(s) are in the normal position with the switch handle in the "B" position. In the "A" position, the left contact(s) change state. In the "C" position, the right contact(s) change state.

5 Contact block holders (Maximum 4 contact blocks)

To order an assembled unit with a 5 contact block holder, add the digit "5" to the end of the catalog number and add \$ 4.00 to the list price.

EX: CBG-3MKIR5, **\$ 41.00**



To order double contact blocks used with the 5 block holder, order the following combinations separately:

Item	Catalog number	Price
2 NO	KCB-20	\$ 16.00
2 NC	KCB-02	
1 NO & 1 NC	KCB-11	

[Ⓞ] Lamp module and bulb must be ordered separately; see pages 8.84.




Illuminated Selector switches Components

Lamp modules — operator mounted

Item	Voltage	Catalog number	List price
 CBK-LMF	Full voltage type	CBK-LMF	\$ 17.50
	Resistor type 120V/60V 240V/120V 24V ^① 120V/24V ^②	CBK-LMR1 CBK-LMR2 CBK-LMR24 CBK-LMLED	21.50
 CBK-LT1	Transformer type ^④ 120V/6V 240V/6V 380V/6V 480V/6V 120V/24V 240V/24V 380V/24V 480V/24V	CBK-LT1 CBK-LT2 CBK-LT3 CBK-LT4 CBK-LT124 CBK-LT224 CBK-LT324 CBK-LT424	35.00

NOTE: Illuminated selector switch operators are complete except for lamp bulbs, lamp modules & contact blocks; these should be ordered separately from the above.

Lamp bulbs

Item	Voltage	Catalog number	List price
Filament Neon   CBK-LB6 CBK-LBN1	Filament 6 VAC/DC 12 VAC/DC 24 VAC/DC 30 VAC/DC 48 VAC/DC 60 VAC/DC 130 VAC/DC Neon ^③ 220 VAC	CBK-LB6 CBK-LB12 CBK-LB24 CBK-LB30 CBK-LB48 CBK-LB60 CBK-LB1 CBK-LBN2	\$ 6
LED bulbs  CBK-LBD1R	Standard Red 12 VDC 24 VAC/DC 48 VAC/VDC 60VAC/VDC 110-130 VAC/DC 120 VAC 230 VAC Green 12 VDC 24 VAC/DC 48 VAC/VDC 60VAC/VDC 110-130 VAC/DC 120 VAC 230 VAC Yellow 12 VDC 24 VAC/DC 48 VAC/VDC 60VAC/VDC 110-130 VAC/DC 120 VAC 230 VAC Blue 12 VDC 24 VAC/DC 48 VAC/VDC 60VAC/VDC 110-130 VAC/DC 120 VAC 230 VAC White 12 VDC 24 VAC/DC 48 VAC/VDC 60VAC/VDC 110-130 VAC/DC 120 VAC 230 VAC Flashing Red 24 VDC Green 24 VDC Yellow 24 VDC	CBK-LBD12R CBK-LBD8R CBK-LBD48R CBK-LBD60R CBK-LBD13R CBK-LBD1R CBK-LBD2R CBK-LBD12G CBK-LBD8G CBK-LBD48G CBK-LBD60G CBK-LBD13G CBK-LBD1G CBK-LBD2G CBK-LBD12Y CBK-LBD8Y CBK-LBD48Y CBK-LBD60Y CBK-LBD13Y CBK-LBD1Y CBK-LBD2Y CBK-LBD12L CBK-LBD8L CBK-LBD48L CBK-LBD60L CBK-LBD13L CBK-LBD1L CBK-LBD2L CBK-LBD12W CBK-LBD8W CBK-LBD48W CBK-LBD60W CBK-LBD13W CBK-LBD1W CBK-LBD2W CBK-LBDRF CBK-LBDGF CBK-LBDYF	27 15 21 21 21 15 21 27 15 21 21 21 15 21 27 15 21 21 21 21 15 21 32 18 21 21 28 18 24 32 18 21 21 28 18 24 20

① Designed for electronic circuits. The resistor limits the making current and prevents disturbances in the circuit. 24V filament lamp bulb required.
 ② Designed for LED 24V bulbs.
 ③ Use with red, yellow and clear lenses only. For 120VAC, consult factory.
 ④ Mounts onto CBK-LMF.

Illuminated Press-to-test pushbuttons

Pilot Devices
Type CBG 30mm



CBG-MLFPT1Y



CBG-KLFPTL1Y



Illuminated button

Press-to-test

Voltage	Black plastic ring		Chrome metal ring	
	Catalog number	List price	Catalog number	List price
Operator only ^①	CBG-KLPT★	\$ 46.00	CBG-MLPT★	\$ 46.00
Full voltage type 6V 12V 24V 48V 120V	CBG-KLFPT6★ CBG-KLFPT7★ CBG-KLFPT8★ CBG-KLFPT9★ CBG-KLFPT1★	69.50	CBG-MLFPT6★ CBG-MLFPT7★ CBG-MLFPT8★ CBG-MLFPT9★ CBG-MLFPT1★	69.50
Resistor type 120V 240V	CBG-KLRPT1★ CBG-KLRPT2★	73.50	CBG-MLRPT1★ CBG-MLRPT2★	73.50
Transformer type 120V/6V 240V/6V 380V/6V 480V/6V	CBG-KLTPT1★ CBG-KLTPT2★ CBG-KLTPT3★ CBG-KLTPT4★	104.50	CBG-MLTPT1★ CBG-MLTPT2★ CBG-MLTPT3★ CBG-MLTPT4★	107.00

★ Select the lens color from the Illuminated buttons & lenses selection chart and substitute the suffix code for the ★. The lens and bulb are included in the price.

Press-to-test (LED bulb)^②

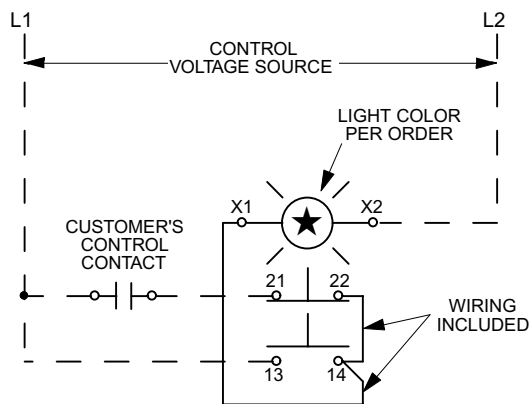
Voltage	Black plastic ring		Chrome metal ring	
	Catalog number	List price	Catalog number	List price
Full voltage type 24V 120V 230V	CBG-KLFPTL8★ CBG-KLFPTL1★ CBG-KLFPTL2★	\$ 78.50 84.50	CBG-MLFPTL8★ CBG-MLFPTL1★ CBG-MLFPTL2★	\$ 78.50 84.50
Transformer type 380V/24V 480V/24V	CBG-KLTPTL3★ CBG-KLTPTL4★	113.50	CBG-MLTPTL3★ CBG-MLTPTL4★	116.00

★ Select the lens color from the Illuminated buttons & lenses selection chart and substitute the suffix code for the ★. The lens and bulb are included in the price.

★ Illuminated buttons

Button color	Suffix code
Red	R
Green	G
Yellow	Y
Blue	L
Clear	C
White	W

Schematic



Press- to-test schematic

① 1 N.O. & 1 N.C. contact block supplied; Lamp module and bulb must be ordered separately; see pages 8.84.
② For blue or white LEDs, add \$ 3.00 to list price.

Illuminated Standard pilot lights



Item	Black plastic ring		Chrome metal ring	
	Catalog number	List price	Catalog number	List price
Operator only ①	CBG-KLF★	\$ 28.00	CBG-MLF★	\$ 28.00
Full voltage type				
6V	CBG-KLF6★	51.50	CBG-MLF6★	51.50
12V	CBG-KLF7★		CBG-MLF7★	
24V	CBG-KLF8★		CBG-MLF8★	
48V	CBG-KLF9★		CBG-MLF9★	
120V	CBG-KLF1★		CBG-MLF1★	
Resistor type				
120V/60V	CBG-KLR1★	55.50	CBG-MLR1★	55.50
240V/120V	CBG-KLR2★		CBG-MLR2★	
Transformer type				
120V/6V	CBG-KLT1★	69.00	CBG-MLT1★	69.00
240V/6V	CBG-KLT2★		CBG-MLT2★	
380V/6V	CBG-KLT3★		CBG-MLT3★	
480V/6V	CBG-KLT4★		CBG-MLT4★	
LED bulb ②				
Full voltage				
24V	CBG-KLFL8★	60.50	CBG-MLFL8★	60.50
120V	CBG-KLFL1★	60.50	CBG-MLFL1★	60.50
230V	CBG-KLFL2★	66.50	CBG-MLFL2★	66.50
Transformer type				
380V/24V	CBG-KLTL3★	78.00	CBG-MLTL3★	78.00
480V/24V	CBG-KLTL4★		CBG-MLTL4★	


★ Select the lens color from the "Illuminated buttons & lenses" selection chart and substitute the suffix code for the ★. The lens and bulb are included in the price (except for operator-only devices).

① Lamp module and bulb must be ordered separately; see pages 8.84.
② For blue & white LEDs, add \$ 3.00 to list price.

Illuminated Standard pilot lights



Pilot Devices
Type CBG 30mm

★ Illuminated buttons and lenses

	Color	Suffix code
	Red	R
	Green	G
	Yellow	Y
	Blue	L
	Clear ②	C
	White	W

NOTE: White LEDs come with clear lenses.

Lamp bulbs

Item	Voltage	Catalog number	List price
<div style="display: flex; justify-content: space-around;"> <div style="text-align: center;"> <p style="color: red; font-size: small;">Filament type</p>  <p style="font-size: x-small;">CBK-LB6</p> </div> <div style="text-align: center;"> <p style="color: red; font-size: small;">Neon type</p>  <p style="font-size: x-small;">CBK-LBN1</p> </div> </div>	<p>Filament 6 VAC/DC 12 VAC/DC 24 VAC/DC 30 VAC/DC 48 VAC/DC 60 VAC/DC 130 VAC/DC</p> <p>Neon ① 220 VAC</p>	<p>CBK-LB6 CBK-LB12 CBK-LB24 CBK-LB30 CBK-LB48 CBK-LB60 CBK-LB1 CBK-LBN2</p>	<p>\$ 6.00</p>
LED bulbs	Color		
	Standard		
	Red		
	12 VDC	CBK-LBD12R	27.00
	24 VAC/DC	CBK-LBD8R	15.00
	110-130 VAC/DC	CBK-LBD13R	21.00
	120 VAC	CBK-LBD1R	15.00
	230 VAC	CBK-LBD2R	21.00
	Green		
	12 VDC	CBK-LBD12G	27.00
	24 VAC/DC	CBK-LBD8G	15.00
	110-130 VAC/DC	CBK-LBD13G	21.00
	120 VAC	CBK-LBD1G	15.00
	230 VAC	CBK-LBD2G	21.00
	Yellow		
	12 VDC	CBK-LBD12Y	27.00
	24 VAC/DC	CBK-LBD8Y	15.00
	110-130 VAC/DC	CBK-LBD13Y	21.00
	120 VAC	CBK-LBD1Y	15.00
	230 VAC	CBK-LBD2Y	21.00
	Blue		
	12 VDC	CBK-LBD12L	32.00
	24 VAC/DC	CBK-LBD8L	18.00
	110-130 VAC/DC	CBK-LBD13L	28.00
	120 VAC	CBK-LBD1L	18.00
	230 VAC	CBK-LBD2L	24.00
	White		
	12 VDC	CBK-LBD12W	32.00
	24 VAC/DC	CBK-LBD8W	18.00
	110-130 VAC/DC	CBK-LBD13W	28.00
	120 VAC	CBK-LBD1W	18.00
	230 VAC	CBK-LBD2W	24.00
	Flashing		
	Red 24 VDC	CBK-LBDRF	20.00
	Green 24 VDC	CBK-LBDGF	
	Yellow 24 VDC	CBK-LBDYF	



8

① Use with red, yellow and clear lenses only.

② To order a lens insert, refer to the lens insert selection chart on pages 8.43 - 8.44 and place the appropriate suffix code at the end of the catalog number (but before the contact block suffix code, if there is one) and add \$.90 to the list price.