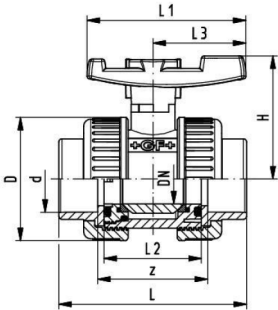


PVC-U metric

Ball valve type 375 PVC-U With solvent cement sockets metric



Range of use

- Basic applications of the water treatment sector as well as other applications involving water.

Model:

- For easy installation and removal
- z-dimension, valve end and valve nut are not compatible with type 546
- Ball seals PTFE
- Actuator unit not connectable

d [mm]	DN [mm]	PN	kv-value ($\Delta p=1$ bar) [l/min]	EPDM Code	FPM Code	kg
16	10	16	71	161 375 501	161 375 511	0.130
20	15	16	185	161 375 502	161 375 512	0.130
25	20	16	350	161 375 503	161 375 513	0.210
32	25	16	700	161 375 504	161 375 514	0.310
40	32	16	1000	161 375 505	161 375 515	0.450
50	40	16	1600	161 375 506	161 375 516	0.690
63	50	16	3100	161 375 507	161 375 517	1.200
75	65	10	5000	161 375 508	161 375 518	2.190
90	80	10	7000	161 375 509	161 375 519	3.360
110	100	10	11000	161 375 510	161 375 520	6.060

d [mm]	D [mm]	H [mm]	L [mm]	L1 [mm]	L2 [mm]	L3 [mm]	z [mm]
16	50	53	76	60	42	40	48
20	50	53	80	60	42	40	48
25	59	60	91	65	48	45	53
32	68	67	102	75	54	51	58
40	80	79	120	85	62	59	68
50	94	90	140	95	72	70	78
63	115	107	169	110	86	84	93
75	145	129	206	130	110	103	118
90	168	143	242	140	128	120	140
110	210	169	282	160	150	141	160



Ball valve type 375 PVC-U With threaded sockets Rp

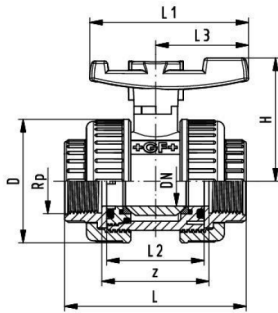


Range of use

- Basic applications of the water treatment sector as well as other applications involving water.

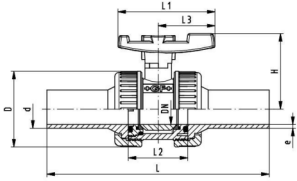
Model:

- For easy installation and removal
- z-dimension, valve end and valve nut are not compatible with type 546
- Ball seals PTFE
- Actuator unit not connectable



Rp [inch]	DN [mm]	PN	kv-value ($\Delta p=1$ bar) [l/min]	EPDM Code	FPM Code	kg	
3/8	10	10	71	161 375 521	161 375 531	0.130	
1/2	15	10	185	161 375 522	161 375 532	0.130	
3/4	20	10	350	161 375 523	161 375 533	0.210	
1	25	10	700	161 375 524	161 375 534	0.300	
1 1/4	32	10	1000	161 375 525	161 375 535	0.450	
1 1/2	40	10	1600	161 375 526	161 375 536	0.680	
2	50	10	3100	161 375 527	161 375 537	1.190	
2 1/2	65	10	5000	161 375 528	161 375 538	2.150	
3	80	10	7000	161 375 529	161 375 539	3.300	
4	100	10	11000	161 375 530	161 375 540	5.890	

Rp [inch]	D [mm]	H [mm]	L [mm]	L1 [mm]	L2 [mm]	L3 [mm]	z [mm]	
3/8	50	53	76	60	42	40	48	
1/2	50	53	80	60	42	40	48	
3/4	59	60	91	65	48	45	53	
1	68	67	102	75	54	51	58	
1 1/4	80	79	116	85	62	59	68	
1 1/2	94	90	126	95	72	70	78	
2	115	107	149	110	86	84	93	
2 1/2	145	129	184	130	110	103	118	
3	168	143	212	140	128	120	140	
4	210	169	244	160	150	141	160	



Ball valve type 375 PVC-U With butt fusion spigots long PE 100 SDR11 metric



Range of use

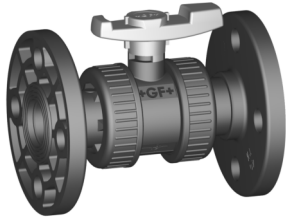
- Basic applications of the water treatment sector as well as other applications involving water.

Model:

- For easy installation and removal
- z-dimension, valve end and valve nut are not compatible with type 546
- Ball seals PTFE
- Actuator unit not connectable

d [mm]	DN [mm]	PN	kv-value ($\Delta p=1$ bar) [l/min]	EPDM Code	FPM Code	kg	
20	15	16	185	161 375 542	161 375 552	0.150	
25	20	16	350	161 375 543	161 375 553	0.210	
32	25	16	700	161 375 544	161 375 554	0.310	
40	32	16	1000	161 375 545	161 375 555	0.450	
50	40	16	1600	161 375 546	161 375 556	1.000	
63	50	16	3100	161 375 547	161 375 557	1.260	
75	65	10	5000	161 375 548	161 375 558	2.400	
90	80	10	7000	161 375 549	161 375 559	3.630	
110	100	10	11000	161 375 550	161 375 560	6.420	

d [mm]	D [mm]	H [mm]	L [mm]	L1 [mm]	L2 [mm]	L3 [mm]	e [mm]	
20	95	53	175	60	42	40	1.8	
25	105	60	195	65	48	45	2.3	
32	115	67	247	75	54	51	2.9	
40	140	79	233	85	62	59	3.6	
50	150	90	265	95	72	70	4.5	
63	165	107	278	110	86	84	5.7	
75	185	129	348	130	110	103	6.8	
90	200	143	350	140	128	120	8.2	
110	220	169	412	160	150	141	10.0	



Ball valve type 375 PVC-U With PVC-U fixed flanges serrated metric

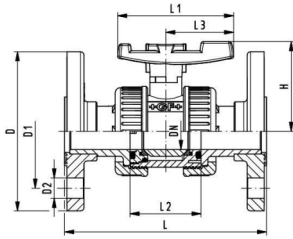


Range of use

- Basic applications of the water treatment sector as well as other applications involving water.

Model:

- For easy installation and removal
- z-dimension, valve end and valve nut are not compatible with type 546
- Ball seals PTFE
- Actuator unit not connectable
- Overall length according to EN 558-1
- Connecting dimension: ISO 7005 PN10, EN 1092 PN10, DIN 2501 PN10

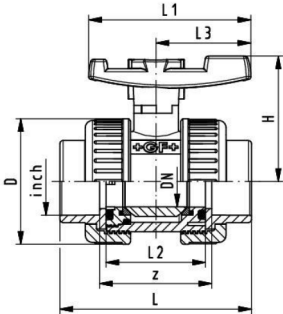


d [mm]	DN [mm]	PN	kv-value ($\Delta p=1$ bar) [l/min]	EPDM Code	FPM Code	kg
20	15	16	185	161 375 562	161 375 572	0.270
25	20	16	350	161 375 563	161 375 573	0.430
32	25	16	700	161 375 564	161 375 574	0.620
40	32	16	1000	161 375 565	161 375 575	0.920
50	40	16	1600	161 375 566	161 375 576	1.300
63	50	16	3100	161 375 567	161 375 577	2.100
75	65	10	5000	161 375 568	161 375 578	3.400
90	80	10	7000	161 375 569	161 375 579	4.950
110	100	10	11000	161 375 570	161 375 580	8.290

d [mm]	D [mm]	D1 [mm]	D2 [mm]	H [mm]	L [mm]	L1 [mm]	L2 [mm]	L3 [mm]
20	95	65	14	53	130	60	42	40
25	105	75	14	60	150	65	48	45
32	115	85	14	67	160	75	54	51
40	140	100	18	79	180	85	62	59
50	150	110	18	90	200	95	72	70
63	165	125	18	107	230	110	86	84
75	185	145	18	129	290	130	110	103
90	200	160	18	143	310	140	128	120
110	220	180	18	169	350	160	150	141

PVC-U Inch BS

Ball valve type 375 PVC-U With solvent cement sockets Inch BS



Range of use

- Basic applications of the water treatment sector as well as other applications involving water.

Model:

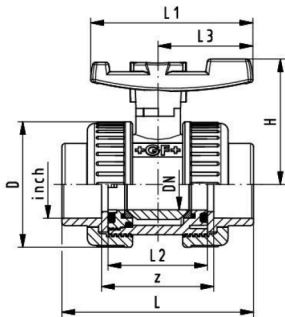
- For easy installation and removal
- z-dimension, valve end and valve nut are not compatible with type 546
- Ball seals PTFE
- Actuator unit not connectable

Inch	DN [mm]	PN	kv-value ($\Delta p=1$ bar) [l/min]	EPDM Code	FPM Code	kg
3/8	10	16	71	161 375 601	161 375 611	0.130
1/2	15	16	185	161 375 602	161 375 612	0.130
3/4	20	16	350	161 375 603	161 375 613	0.210
1	25	16	700	161 375 604	161 375 614	0.310
1 1/4	32	16	1000	161 375 605	161 375 615	0.450
1 1/2	40	16	1600	161 375 606	161 375 616	0.690
2	50	16	3100	161 375 607	161 375 617	1.200
	65	10	5000	161 375 508	161 375 518	2.190
3	80	10	7000	161 375 609	161 375 619	3.360
4	100	10	11000	161 375 610	161 375 620	6.060

Inch	D [mm]	H [mm]	L [mm]	L1 [mm]	L2 [mm]	L3 [mm]	z [mm]
3/8	50	53	76	60	42	40	48
1/2	50	53	80	60	42	40	48
3/4	59	60	91	65	48	45	53
1	68	67	102	75	54	51	58
1 1/4	80	79	120	85	62	59	68
1 1/2	94	90	140	95	72	70	78
2	115	107	169	110	86	84	93
	145	129	206	130	110	103	118
3	168	143	242	140	128	120	140
4	210	169	282	160	150	141	160

PVC-U ASTM/ANSI

Ball valve type 375 PVC-U With solvent cement sockets Inch ASTM Inclusive 2 threaded valve ends NPT



Range of use

- Basic applications of the water treatment sector as well as other applications involving water.

Model:

- For easy installation and removal
- z-dimension, valve end and valve nut are not compatible with type 546
- Ball seals PTFE
- Actuator unit not connectable
- Threaded valve ends are only enclosed for DN10/15-50

Inch	DN [mm]	PN	kv-value ($\Delta p=1$ bar) [l/min]	EPDM Code	FPM Code	kg
3/8	10	16	71	161 375 001	161 375 016	0.130
1/2	15	16	185	161 375 002	161 375 017	0.130
3/4	20	16	350	161 375 003	161 375 018	0.210
1	25	16	700	161 375 004	161 375 019	0.310
1 1/4	32	16	1000	161 375 005	161 375 020	0.450
1 1/2	40	16	1600	161 375 006	161 375 021	0.690
2	50	16	3100	161 375 007	161 375 022	1.200
2 1/2	65	10	5000	161 375 008	161 375 023	2.190
3	80	10	7000	161 375 009	161 375 024	3.360
4	100	10	11000	161 375 010	161 375 025	6.060

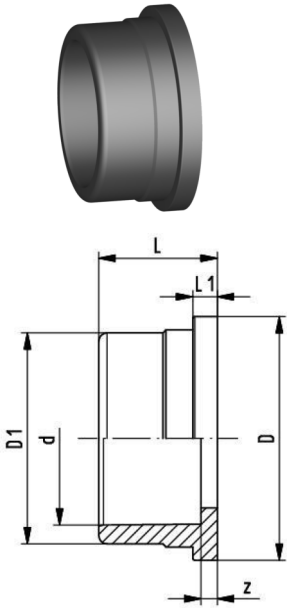
Inch	D [mm]	H [mm]	L [mm]	L1 [mm]	L2 [mm]	L3 [mm]	z [mm]
3/8	50	53	76	60	42	40	48
1/2	50	53	80	60	42	40	48
3/4	59	60	91	65	48	45	53
1	68	67	102	75	54	51	58
1 1/4	80	79	120	85	62	59	68
1 1/2	94	90	140	95	72	70	78
2	115	107	169	110	86	84	93
2 1/2	145	129	206	130	110	103	118
3	168	143	242	140	128	120	140
4	210	169	282	160	150	141	160

Valve ends ball valve type 375

Valve end 375 PVC-U With solvent cement socket metric



Available from 2nd quarter 2007

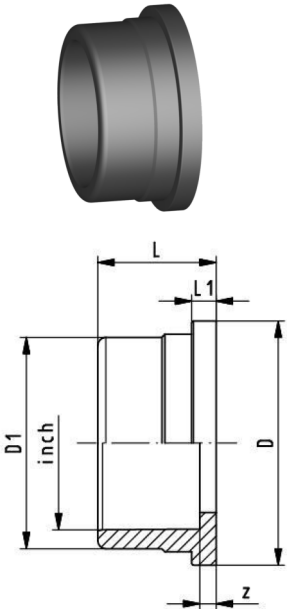


d [mm]	DN [mm]	PN	Code	D [mm]	D1 [mm]	L [mm]	L1 [mm]	z [mm]
16	10	16	161 375 901	35	26	18	5	4
20	15	16	161 375 902	35	29	18	5	2
25	20	16	161 375 903	43	35	21	5	2
32	25	16	161 375 904	51	43	24	6	2
40	32	16	161 375 905	60	52	29	6	3
50	40	16	161 375 906	72	62	34	7	3
63	50	16	161 375 907	89	76	41	7	3
75	65	10	161 375 908	115	90	47	8	3
90	80	10	161 375 909	133	106	56	10	5
110	100	10	161 375 910	166	130	66	12	5

Valve end 375 PVC-U With solvent cement socket BS



Available from 2nd quarter 2007



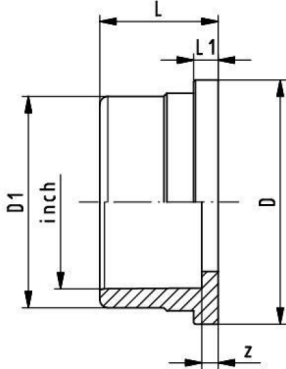
Inch	PN	Code	D [mm]	D1 [mm]	L [mm]	L1 [mm]	z [mm]
3/8	16	161 375 911	35	26	18	5	4
1/2	16	161 375 912	35	29	18	5	2
3/4	16	161 375 913	43	35	21	5	2
1	16	161 375 914	51	43	24	6	2
1 1/4	16	161 375 915	60	52	29	6	2
1 1/2	16	161 375 916	72	62	34	7	3
2	16	161 375 917	89	76	41	7	3
	10	161 375 908	115	90	47	8	
3	10	161 375 919	133	106	56	10	5
4	10	161 375 920	166	131	66	12	5



Valve end 375 PVC-U With solvent cement socket ASTM



Available from 2nd quarter 2007



Inch	PN	Code	D [mm]	D1 [mm]	L [mm]	L1 [mm]	z [mm]
3/8	16	161 375 427	35	26	23	5	4
1/2	16	161 375 428	35	29	25	5	2
3/4	16	161 375 429	43	35	28	5	2
1	16	161 375 430	51	43	31	6	2
1 1/4	16	161 375 431	60	53	34	6	2
1 1/2	16	161 375 432	72	62	38	7	3
2	16	161 375 433	89	76	41	7	3
2 1/2	10	161 375 434	114	90	48	8	3
3	10	161 375 435	133	106	57	10	8
4	10	161 375 436	165	130	66	12	5



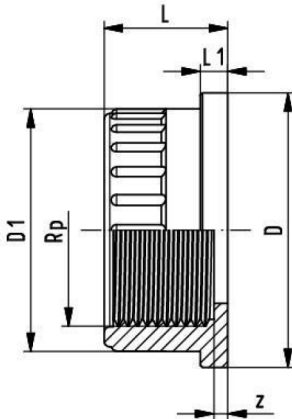
Valve end 375 PVC-U With threaded socket Rp



Model:

- Connection to plastic thread only
- Do not use thread sealing pastes that are harmful to PVC-U

Available from 2nd quarter 2007



Rp [inch]	PN	Code	D [mm]	D1 [mm]	L [mm]	L1 [mm]	z [mm]
3/8	10	161 375 921	35	26	18	5	7
1/2	10	161 375 922	33	30	18	5	3
3/4	10	161 375 923	43	36	21	5	5
1	10	161 375 924	51	44	24	6	5
1 1/4	10	161 375 925	60	53	27	6	6
1 1/2	10	161 375 926	72	63	27	7	6
2	10	161 375 927	89	77	31	7	5
2 1/2	10	161 375 928	115	90	36	8	6
3	10	161 375 929	133	106	41	10	8
4	10	161 375 930	166	130	47	12	8



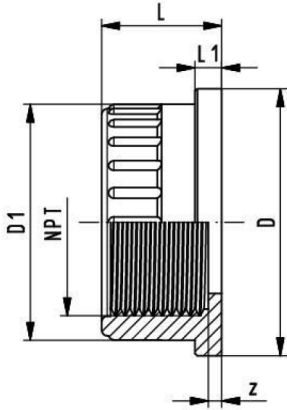
Valve end 375 PVC-U With threaded socket NPT



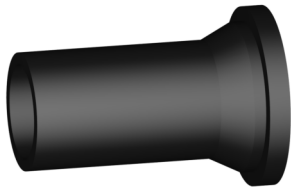
Model:

- Connection to plastic thread only
- Do not use thread sealing pastes that are harmful to PVC-U

Available from 2nd quarter 2007



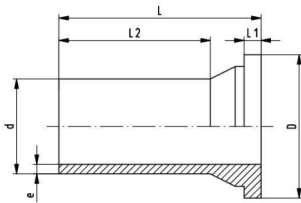
NPT [inch]	PN	Code	D [mm]	D1 [mm]	L [mm]	L1 [mm]	z [mm]
3/8	10	161 375 437	35	26	18	5	5
1/2	10	161 375 438	35	30	24	5	6
3/4	10	161 375 439	43	36	21	5	5
1	10	161 375 440	51	44	24	6	5
1 1/4	10	161 375 441	60	53	27	6	6
1 1/2	10	161 375 442	72	64	27	7	6
2	10	161 375 443	89	77	31	7	5



Valve end 375 PVC-U With butt fusion spigot long SDR11 metric



Available from 2nd quarter 2007

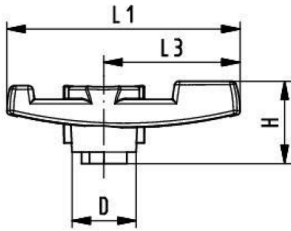
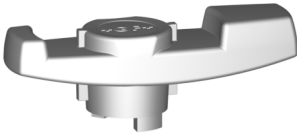


d [mm]	PN	Code	D [mm]	e [mm]	L [mm]	L1 [mm]	L2 [mm]
20	16	161 375 932	36	3.5	67	6	45
25	16	161 375 933	44	3.5	74	6	50
32	16	161 375 934	52	3.5	97	7	72
40	16	161 375 935	61	4.0	86	7	63
50	16	161 375 936	73	5.0	97	8	72
63	16	161 375 937	90	6.2	96	9	75
75	16	161 375 938	116	7.0	119	10	88
90	16	161 375 939	134	9.0	112	12	82
110	16	161 375 940	168	10.0	131	15	96

Spare parts

Handle to type 375 PVC-U Standard handle, orange

Available from 2nd quarter 2007



d-d [mm]	DN-DN [mm]	Code	L1 [mm]	L3 [mm]	H [mm]	D [mm]
16 - 20	10 - 15	161 490 900	67	40	27	19
- 25	- 20	161 490 901	77	45	28	22
- 32	- 25	161 490 902	87	51	32	25
- 40	- 32	161 490 903	102	59	36	28
- 50	- 40	161 490 904	119	70	40	32
- 63	- 50	161 490 905	146	84	45	37
- 75	- 65	161 490 906	179	103	52	41
- 90	- 80	161 490 907	209	120	57	44
- 110	- 100	161 490 908	250	141	61	48



Seal set 375 PVC-U

Model:

- Consisting of ball seals PTFE and o-rings

Available from 2nd quarter 2007

d [mm]	DN [mm]	EPDM Code	FPM Code
16	10	161 375 402	161 375 417
20	15	161 375 403	161 375 418
25	20	161 375 404	161 375 419
32	25	161 375 405	161 375 420
40	32	161 375 406	161 375 421
50	40	161 375 407	161 375 422
63	50	161 375 408	161 375 423
63	65	161 375 409	161 375 424
90	80	161 375 410	161 375 425
110	100	161 375 411	161 375 426