

OHIO SCRAP HANDLING MAGNETS AND AUXILIARY EQUIPMENT

LIFTING MAGNETS

VERS-A-LIFT

POWERFUL, EASILY PORTABLE MODELS WITH OR WITHOUT BUILT-IN RECTIFIER.

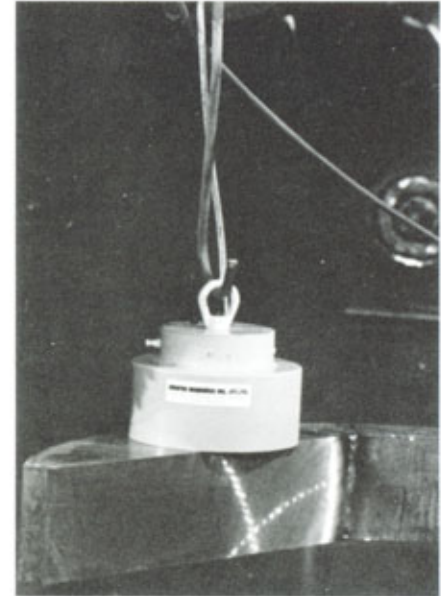
Powerful gripping force for their size. Ohio electro VERS-A-LIFT magnets are efficient, lift, hold and place material handlers throughout the industry. They're easily portable and extremely maneuverable. You'll use these light-weight magnets anywhere inside or outside your plant. Lifting capacities range from 350 to 6,320 lbs., in magnet diameters of 4, 7, 10, 12, and 15 inches.

VERS-A-LIFT magnets are unusually versatile. Easily move small plates and castings, and also use them for small scrap handling.

Ideal material handlers for moving equipment. Carry your materials to any part of the plant with small cranes or fork lifts. VERS-A-LIFTS attach quickly and easily with their 1½ inch I.D. lifting ring.

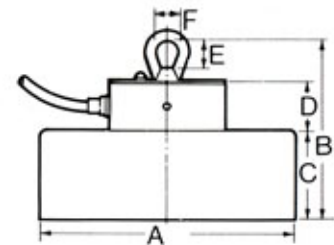
Long-sheet handling capabilities. VERS-A-LIFTS are used in multiples with spreader beams for lifting and placing long sheets that may otherwise flex or bow.

Adaptable to your power source. VERS-A-LIFTS are available in standard DC voltages or with built-in rectifiers. Separate rectifiers are also offered.



MODELS WITH BUILT-IN RECTIFIER (115 V.A.C. SINGLE PHASE, 60 HZ)

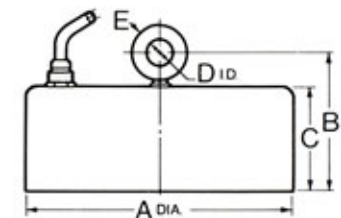
Size (Dia.)	B	C	D	E	F	G	Net Weight (Lbs.)
7"	8 ¹¹ / ₁₆	4 ⁷ / ₁₆	2 ¹ / ₄	1 ¹ / ₂	1 ¹ / ₄	³ / ₈	38
10"	9 ⁵ / ₈	4 ⁵ / ₈	2 ⁷ / ₈	1 ³ / ₄	1 ¹ / ₂	¹ / ₂	87
12"	10 ¹ / ₈	4 ³ / ₄	2 ⁷ / ₈	1 ³ / ₄	1 ¹ / ₂	¹ / ₂	120
15"	10 ³ / ₄	5 ¹ / ₄	3 ³ / ₄	1 ³ / ₄	1 ¹ / ₂	¹ / ₂	235



MODELS OPERATING ON STANDARD D.C. VOLTAGE (115 V.D.C. EXCEPT 4" (12 V.D.C.))

Size (Dia.)	A	B	C	D	E	Watts Intermittent	Net Weight (Lbs.)
4"	4	5 ¹ / ₃₂	3 ⁵ / ₈	1 ³ / ₁₆	⁷ / ₁₆	40	11
7"	7	5 ²⁷ / ₃₂	4 ⁷ / ₁₆	1 ³ / ₁₆	⁷ / ₁₆	114	34
10"	10	6 ⁷ / ₁₆	4 ⁵ / ₈	1 ¹ / ₂	2 ¹ / ₃₂	201	78
12"	12	6 ⁹ / ₁₆	4 ³ / ₄	1 ¹ / ₂	2 ¹ / ₃₂	261	112
15"	15	7 ¹ / ₁₆	5 ¹ / ₄	1 ¹ / ₂	2 ¹ / ₃₂	392	212

*(Suitable rectifiers available on request)



PULL DATA

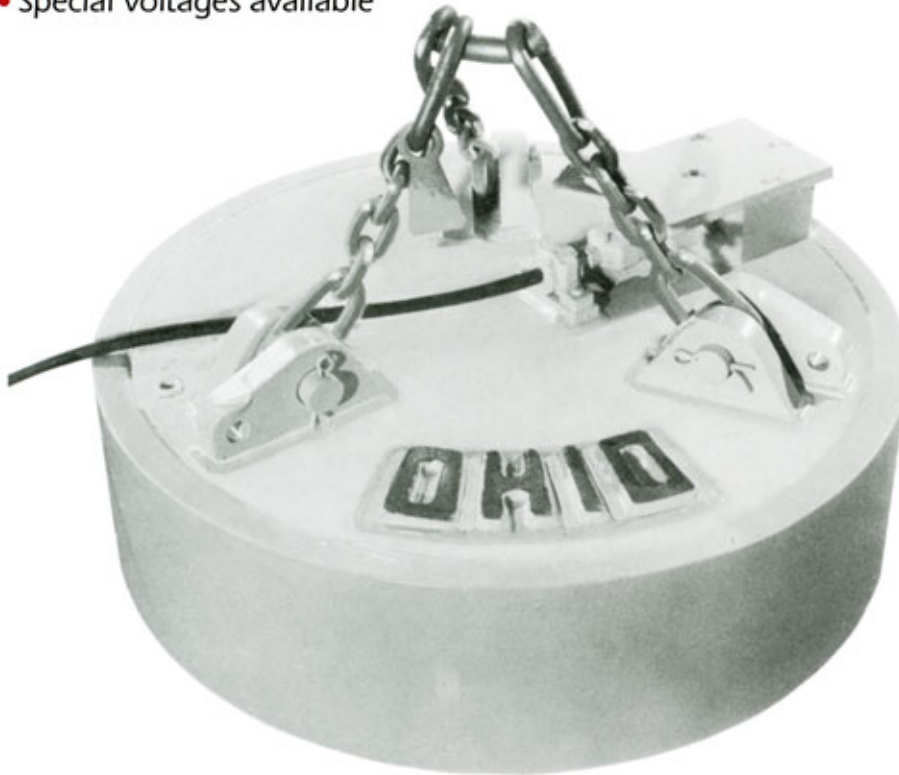
Size (O.D.)	4"	7"	10"	12"	15"
Max. Force (Cold) Lb. Theoretical	612	2,830	5,675	6,950	11,150
Max. Force Hot 75% Theoretical	344	1,740	3,290	3,900	6,290
Min. Plate Thickness (Zero Air Gap Direct Contact Max. Force)	³ / ₄ "	1"	1 ¹ / ₄ "	1 ¹ / ₂ "	1 ³ / ₄ "

OHIO SCRAP HANDLING MAGNETS AND AUXILIARY EQUIPMENT

LIFTING MAGNETS

POW-R-LITE

- Aluminum or copper wound to High-Duty-Cycle lifting magnets for scrap handling
- Ideal for track sweeping operations
- 230 VDC standard
- Special voltages available



AVERAGE LIFTING CAPACITY IN POUNDS*

Single Slab or Billet	Machine Cast Pig Iron	#1 Heavy Melt	#1 Machine Scrap	#2 Bushelings	Steel Turnings
5,300	175	150	75	60	50
7,700	300	300	150	100	100
10,000	550	550	300	225	175
13,000	780	845	460	345	270
16,500	1,220	1,220	580	400	330
40,000	2,500	2,500	1,150	800	675

TECHNICAL SPECIFICATIONS

Size (Dia.)	Cold Amps @ 230 Volts	** Req'd KW	Magnet Shipping Weight	Avg. Cable Size	Controller Size
20	4	1	350	#10	CDS
25	11	2.5	670	#10	CDS
30	17	4	975	#10	CDS
34	19	5	1,470	#10	CDS
40	30	7	2,100	#8	RD-1W
45	34	8	3,740	#8	RD-1W

* Description of material based on specifications for Iron & Steel Scrap, published by the Institute of Scrap Iron & Steel, Washington, D.C. Capacities are based on tests under optimum conditions. Performance will vary with specific operations.

** For proper Generator Sizing use cold watts and size equal to or larger than, to insure sufficient power for your magnet's operation.

OHIO SCRAP HANDLING MAGNETS AND AUXILIARY EQUIPMENT

LIFTING MAGNETS

LOADSTAR SERIES

- Production scrap handling magnets
- Heavy-duty cast case construction
- Light-weight ideal for hydraulic machines
- All models are deep field design
- 230 VDC standard
- Special voltages available



TECHNICAL SPECIFICATIONS

Dia. & Type	Cold Amps @ 230 Volts	Gen.** KW	Magnet Weight
48 Loadstar	42A	10	2,890
58 Loadstar	60A	15	3,900
67 Loadstar	85A	20	5,600

LIFTING CAPACITY*

Pig Iron & #1 H.M.	#2 Broken	Steel Turnings
1,800 Lbs.	625-1200	625
2,780 Lbs.	800-1800	850
4,200 Lbs.	1350-2700	1,350

* Description of material based on specifications for Iron & Steel Scrap, published by the Institute of Scrap Iron & Steel, Washington, D.C. Capacities are based on tests under optimum conditions. Performance will vary with specific operations.

** For proper Generator Sizing use cold watts and size equal to or larger than, to insure sufficient power for your magnet's operation.

OHIO SCRAP HANDLING MAGNETS AND AUXILIARY EQUIPMENT

LOADSTAR LIFTING MAGNETS

LS-X SERIES

- Production scrap handling magnets
- **Extra heavy bottom plate design for large, dense scrap handling**
- Heavy-duty cast case construction
- All models are deep field design
- 230 VDC standard
- Special voltages available



SUPER LOADSTAR

- Rugged, cast case construction
- Super field design
- Greater lifting capacity
- Increased duty-cycle for enhanced magnetic operation
- Cooler operating temperature for extended service life



TECHNICAL SPECIFICATIONS

Dia. & Type	Cold Amps @ 230 Volts	Gen. KW**	Magnet Weight
58 LS-X	60A	15	4,142
67 LS-X	85A	20	6,340
67 Super Loadstar	85	20	6,100

LIFTING CAPACITY*

Pig Iron & #1 H.M.	#2 Broken	Steel Turnings
2,780 Lbs.	800-1800	850
4,200 Lbs.	1350-2700	1,350
4,585 Lbs.	1470-3250	1,475

* Description of material based on specifications for Iron & Steel Scrap, published by the Institute of Scrap Iron & Steel, Washington, D.C. Capacities are based on tests under optimum conditions. Performance will vary with specific operations.

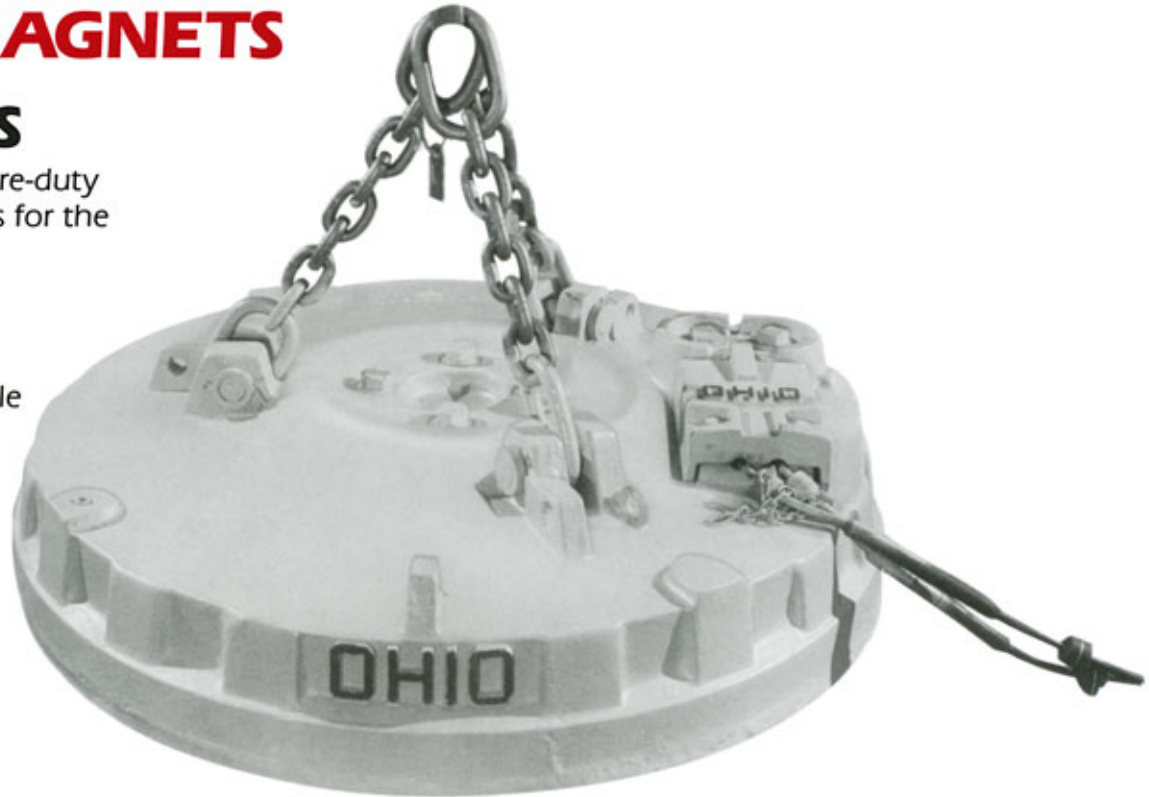
** For proper Generator Sizing use cold watts and size equal to or larger than, to insure sufficient power for your magnet's operation.

OHIO SCRAP HANDLING MAGNETS AND AUXILIARY EQUIPMENT

LIFTING MAGNETS

AWX SERIES

- Aluminum wound severe-duty scrap handling magnets for the toughest applications
- AWX standard field
- DAWX deep field
- 230 VDC standard
- Special voltages available



TECHNICAL SPECIFICATIONS

Magnet Size & Type	Magnet Weight	Cold Amps	Magnet Cold Watts**	Controller Type	Min. Cable Size
34 AWX	1,150	18	4,200	CD-S	#10
40 AWX	1,900	29	6,600	RD-1W	#8
45 AWX	2,400	39	8,975	RD-1W	#8
45 DAWX	2,800	39	9,000	RD-1W	#8
55 AWX	4,090	58	13,300	RD-1W	#6
55 DAWX	4,000	63	14,400	RD-1W	#6
66 AWX	6,140	80	18,500	RD-1W	#4
66 DAWX	6,300	84	19,200	RD-1W	#4
71 AWX	7,830	102	23,400	RD-2A	#4
71 DAWX	8,200	103	23,800	RD-2A	#4
77 DAWX	10,600	132	30,500	RD-2A	#2
83 AWX	13,000	150	34,700	RD-3A	#2
83 DAWX	14,000	156	35,900	RD-3A	#2
93 DAWX	18,500	173	39,700	RD-3A	#2

LIFTING CAPACITY*

Pig Iron & #1 H.M.	#2 Broken	Steel Turnings
550	250-400	300
900	400-600	300
1,650	500-1000	525
1,800	570-1100	625
2,620	1500-1850	780
2,760	1650-1950	825
4,100	2475-2950	1,200
4,370	2600-3100	1,275
5,260	3275-3950	1,560
5,580	3450-4200	1,660
6,600	3900-4800	2,135
7,900	2500-4700	2,610
9,200	5350-6900	3,040
10,900	6400-8000	3,515

* Description of material based on specifications for Iron & Steel Scrap, published by the Institute of Scrap Iron & Steel, Washington, D.C. Capacities are based on tests under optimum conditions. Performance will vary with specific operations.

** For proper Generator Sizing use cold watts and size equal to or larger than, to insure sufficient power for your magnet's operation.

OHIO SCRAP HANDLING MAGNETS AND AUXILIARY EQUIPMENT

LIFTING MAGNETS

CWX SERIES

- Copper wound severe-duty scrap handling magnets for the toughest applications
- 230 VDC standard
- Special voltages available



TECHNICAL SPECIFICATIONS

CWX-Standard Field DCWX-Deep Field

Magnet Size & Type	Magnet Weight	Cold Amps	Magnet Cold Watts**	Controller Type	Min. Cable Size
34 CWX	1,500	22	5,000	RD-1W	#10
40 CWX	2,000	29	6,600	RD-1W	#8
45 CWX	3,100	46	10,500	RD-1W	#8
45 DCWX	3,850	44	10,000	RD-1W	#8
55 CWX	5,200	52	15,500	RD-1W	#6
55 DCWX	5,700	68	15,700	RD-1W	#6
66 CWX	7,700	103	23,700	RD-2A	#4
66 DCWX	8,700	105	24,200	RD-2A	#4
77 DCWX	14,300	100	23,100	RD-1W	#4
83 CWX	16,000	129	29,800	RD-2A	#2
83 DCWX	17,900	181	41,600	RD-3A	#1/0

LIFTING CAPACITY*

Pig Iron & #1 H.M.	#2 Broken	Steel Turnings
750	300-500	275
950	450-650	325
1,800	570-1100	650
1,900	625-1200	725
2,975	725-1525	1,050
3,200	775-1650	1,125
4,800	2500-3100	1,600
5,200	2700-3300	1,700
6,790	4370	2,200
8,330	5370	2,720
9,580	6180	3,130

* Description of material based on specifications for Iron & Steel Scrap, published by the Institute of Scrap Iron & Steel, Washington, D.C. Capacities are based on tests under optimum conditions. Performance will vary with specific operations.

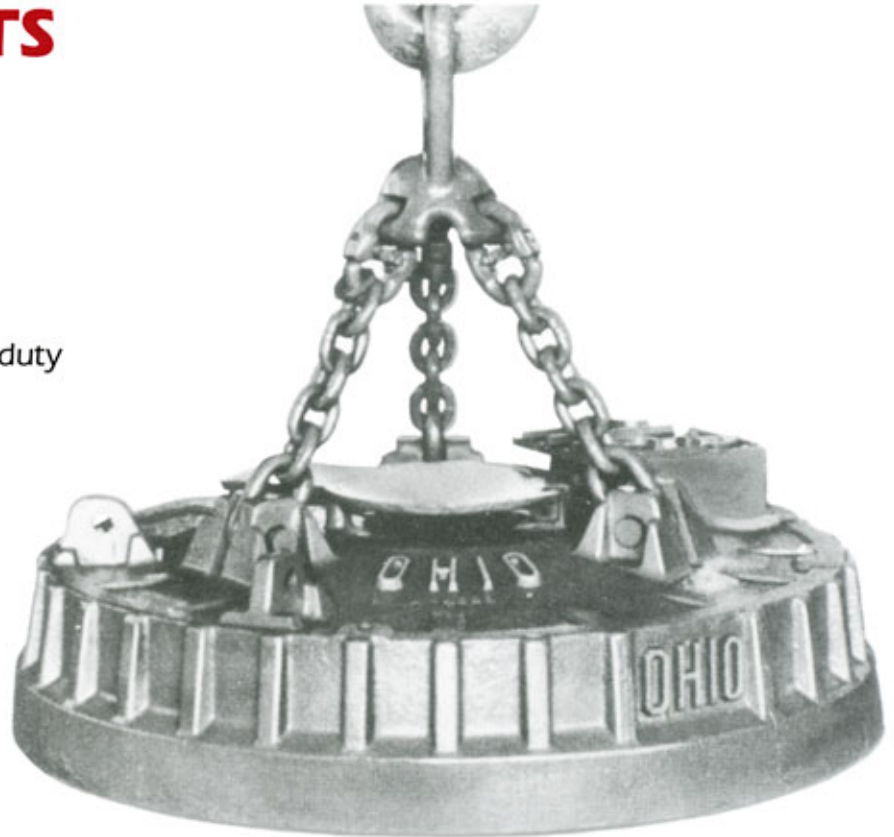
** For proper Generator Sizing use cold watts and size equal to or larger than, to insure sufficient power for your magnet's operation.

OHIO SCRAP HANDLING MAGNETS AND AUXILIARY EQUIPMENT

LIFTING MAGNETS

AWL SERIES

- 230 VDC standard
(special voltages available on request)
- Aluminum wound coils standard
- Copper wound coils available for hotwork applications
- Ideally suited for severe scrap handling duty
 - Drop ball handling
 - Ingot and mold handling
 - Crop end handling
- Heavy cast steel magnet case
- Alloy steel lifting chains
- Quick-disconnect lead assemblies
- Deep-field construction



TECHNICAL SPECIFICATIONS – ALUMINUM WOUND COILS

Magnet Size & Type	Magnet Weight	Cold Amps	Magnet Cold Watts**	Controller Type	Min. Cable Size
47 AWL	3,250	40	9,250	RD-1W	#8
57 AWL	5,650	54	12,500	RD-1W	#6
61 AWL	6,900	74	17,000	RD-1W	#4
66 AWL	7,650	76	17,400	RD-1W	#4
72 AWL	10,250	103	23,600	RD-2A	#4
76 DAWL***	15,700	123	28,400	RD-2A	#2
83 DAWL***	19,300	139	32,100	RD-3A	#2
93 DAWL†	23,400	151	34,700	RD-3A	#2

LIFTING CAPACITY*

Pig Iron & #1 H.M.	#2 Broken	Steel Turnings
1,900	600-1100	650
3,000	750-1600	1,000
3,900	1100-2000	1,300
4,450	2800-3300	1,500
5,700	3500-4300	2,250
7,750	4700-6000	2,450
9,000	5500-7000	2,850
11,400	7000-8700	4,100

* Description of material based on specifications for Iron & Steel Scrap, published by the Institute of Scrap Iron & Steel, Washington, D.C. Capacities are based on tests under optimum conditions. Performance will vary with specific operations.

** For proper Generator Sizing use cold watts and size equal to or larger than, to insure sufficient power for your magnet's operation.

*** Extra Deep Field

† Split voltages available – consult factory